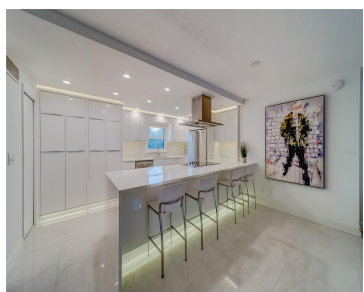
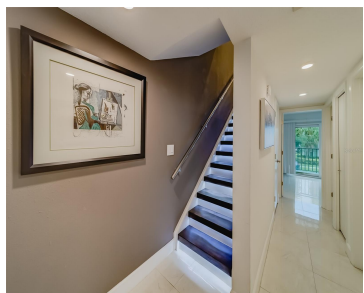


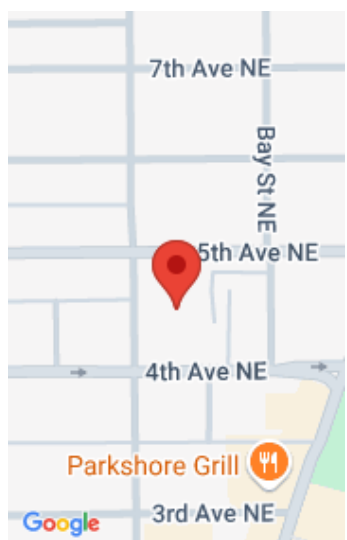
105 4TH AVENUE SAINT PETERSBURG FL 33701

<https://candiscarmichael.com>



Welcome to your dream home in the vibrant heart of downtown St. Petersburg! This beautifully updated 2-bedroom townhome in the sought-after Townview community boasts contemporary elegance and modern features that will captivate you from the moment you step inside. The interior is adorned with highly polished porcelain tile and accent lighting throughout, showcasing the sophisticated [...]

- 2 beds
- 2 baths
- Residential
- Condominium
- Active
- 1035 sq ft



Call us now

Phone: 727-888-3292
Email: RealtorCandis@gmail.com



Courtesy of

Listing Office: DALTON WADE INC

Status: Active

Office ID: MFR260031661

MLS ID: MFRU8250634

Description

Virtual Tour: <https://www.propertypanorama.com/instaview/stellar/U8250634>

Basics

Unit Number: 215

Bathrooms Half: 1

Category: Condominium

Bedrooms: 2 beds

Half baths: 1 half bath

Area, sq ft: 1035 sq ft

Year built: 1982

SubdivisionName: TOWNVIEW CONDO

ListAOR: mfrmls

Bathrooms Full: 1

Date added: Added 2 weeks ago

Type: Residential

Bathrooms: 2 baths

Floors: 6 floors

Lot size, sq ft: 0 sq ft

UnitNumber: 215

ListOfficeName: DALTON WADE INC

Location Details

Township: 31

Road Surface Type: Paved

Property Features



Call us now

Phone: 727-888-3292

Email: RealtorCandis@gmail.com



Charles Rutenberg Realty, Inc.
THE STANDARD OF EXCELLENCE

Interior Features: Living Room/Dining Room Combo, Open Floorplan

Flooring: Tile

Patio And Porch Features: Porch, Rear Porch

Carport YN: Yes

Pets Allowed: Yes

Roof: Built-Up

Utilities: BB/HS Internet Available, Electricity Connected, Public, Water Connected

Water Source: Public

Cooling: Central Air

Appliances: Dishwasher, Microwave, Range, Range Hood, Refrigerator, Wine Refrigerator

Laundry Features: In Kitchen, Laundry Closet

Parking Features: Assigned, On Street, Under Building

Carport Spaces: 1

Exterior Features: Balcony, Courtyard, Rain Gutters, Sidewalk, Sliding Doors

Window Features: Blinds

Vegetation: Trees/Landscaped

Sewer: Public Sewer

Heating: Central

Property Details

Subdivision Name: TOWNVIEW CONDO

Levels: Two

Foundation Details: Stem Wall

Listing Terms: Cash, Conventional

Parcel Number: 19-31-17-91613-000-2150

Direction Faces: South

Construction Materials: Block

Property Condition: Completed

Association Information

Association YN: Yes

Association Fee Includes: Pool, Insurance, Maintenance Grounds, Sewer, Trash, Water

Association Amenities: Elevator(s), Pool

Community Features: Gated Community - No Guard, Pool, Sidewalks

Fees&Taxes

Tax Year: 2023

Tax Annual Amount: \$4,687

Tax Legal Description: TOWNVIEW CONDO UNIT 215

Tax Lot: 215



Call us now

Phone: 727-888-3292

Email: RealtorCandis@gmail.com



Charles Rutenberg Realty, Inc.
THE STANDARD OF EXCELLENCE

Rooms

Room type	Level
Great Room	Second
Kitchen	Second
Primary Bedroom	First
Bedroom 2	First

Amenities & Features

Waterfront available: No

AttachedGarageYN: No

PoolPrivateYN: No

CommunityFeatures: Gated Community - No Guard, Pool, Sidewalks

ExteriorFeatures: Balcony, Courtyard, Rain Gutters, Sidewalk, Sliding Doors

Features: Living Room/Dining Room Combo, Open Floorplan

GarageYN: No

FireplaceYN: No

Cooling: Central Air

WindowFeatures: Blinds

Utilities: BB/HS Internet Available, Electricity Connected, Public, Water Connected

Amenities: Dishwasher, Microwave, Range, Range Hood, Refrigerator, Wine Refrigerator

Building Details

NewConstructionYN: No

Exterior material: Block

Parking: Assigned, On-street, Under Building

Heating: Central

Roof: Built-up



Call us now

Phone: 727-888-3292

Email: RealtorCandis@gmail.com



Charles Rutenberg Realty, Inc.
THE STANDARD OF EXCELLENCE

Miscellaneous

Ownership: Condominium **Disclosures:** Condominium Disclosure Available, Seller Property Disclosure

Occupant Type: Owner **Showing Requirements:** 24 Hour Notice, Appointment Only, ShowingTime



Call us now

Phone: 727-888-3292

Email: RealtorCandis@gmail.com



Charles Rutenberg Realty, Inc.
THE STANDARD OF EXCELLENCE