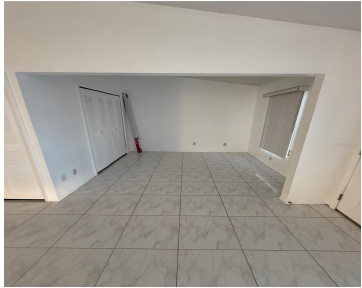


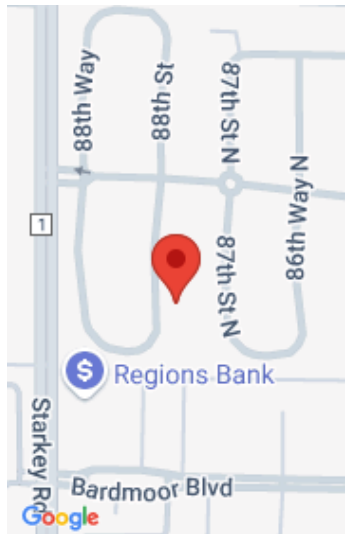
9873 88TH STREET SEMINOLE FL 33777

<https://candiscarmichael.com>



This charming, single-story villa in the coveted Bent Tree Villas community presents an exceptional opportunity for comfortable Florida living. The residence boasts two bedrooms, two bathrooms, and a versatile bonus room ideal for use as a home office or den. Its convenient Pinellas County location offers easy access to Madeira Beach (approximately 15 minutes away) [...]

- 2 beds
- 2 baths
- Residential
- Villa
- Active
- 1080 sq ft



Call us now

Phone: 727-888-3292

Email: RealtorCandis@gmail.com



Courtesy of

Listing Office: REALTY EXPERTS

Status: Active

Office ID: MFR260031755

MLS ID: MFRTB8356895

Description

Virtual Tour: <https://www.propertypanorama.com/instaview/stellar/TB8356895>

Basics

Bathrooms Full: 2

Category: Villa

Bedrooms: 2 beds

Half baths: 0 half baths

Area, sq ft: 1080 sq ft

Year built: 1978

ListOfficeName: REALTY EXPERTS

Date added: Added 1 week ago

Type: Residential

Bathrooms: 2 baths

Floors: 1 floor

Lot size, sq ft: 4629 sq ft

SubdivisionName: BENT TREE

ListAOR: mfrmls

Location Details

Township: 30

Road Surface Type: Paved

Elementary School: Starkey Elementary-PN **Middle Or Junior School:** Osceola Middle-PN

High School: Dixie Hollins High-PN

Property Features



Call us now

Phone: 727-888-3292

Email: RealtorCandis@gmail.com



Charles Rutenberg Realty, Inc.
THE STANDARD OF EXCELLENCE

Interior Features: Ceiling Fans(s), Eat-in Kitchen, Vaulted Ceiling(s), Window Treatments

Flooring: Ceramic Tile, Laminate

Patio And Porch Features: Front Porch, Rear Porch, Screened

Pets Allowed: Yes

Roof: Shingle

Utilities: Cable Connected, Electricity Connected, Public, Sewer Connected, Water Connected

Sewer: Public Sewer

Heating: Central

Lot Features: Sidewalk, Paved, Unincorporated

Appliances: Dishwasher, Disposal, Dryer, Electric Water Heater, Range, Refrigerator, Washer

Laundry Features: Inside

Parking Features: Driveway

Exterior Features: Lighting, Private Mailbox, Rain Gutters, Sidewalk, Sliding Doors, Storage

Window Features: Blinds

Water Source: Public

Cooling: Central Air

Furnished: Unfurnished

Property Details

Subdivision Name: BENT TREE

Levels: One

Foundation Details: Slab

Listing Terms: Cash, Conventional

Parcel Number: 24-30-15-08265-000-0260

Direction Faces: West

Construction Materials: Block

Association Information

Association YN: Yes

Association Fee Frequency: Annually

Association Amenities: Clubhouse, Pool, Storage

Association Fee: 720

Association Fee Includes: Pool, Management

Community Features: Clubhouse, Deed Restrictions, Pool, Sidewalks

Fees&Taxes



Call us now

Phone: 727-888-3292

Email: RealtorCandis@gmail.com



Charles Rutenberg Realty, Inc.
THE STANDARD OF EXCELLENCE

Tax Year: 2024

Tax Annual Amount: \$3,475

Tax Legal Description: Bent Tree West Lot 26

Tax Lot: 0260

Rooms

Room type	Dimensions	Level	Length	Width
Living Room	17x12	First	12	17
Kitchen	14x11	First	11	14
Primary Bedroom	11x11	First	11	11
Bedroom 2	11x8	First	8	11
Den	8x9	First	9	8

Amenities & Features

Waterfront available: No

AttachedGarageYN: No

PoolPrivateYN: No

CommunityFeatures: Clubhouse, Deed Restrictions, Pool, Sidewalks

ExteriorFeatures: Lighting, Private Mailbox, Rain Gutters, Sidewalk, Sliding Doors, Storage

Features: Ceiling Fans(s), Eat-in Kitchen, Vaulted Ceiling(s), Window Treatments

GarageYN: No

FireplaceYN: No

Cooling: Central Air

WindowFeatures: Blinds

Utilities: Cable Connected, Electricity Connected, Public, Sewer Connected, Water Connected

Amenities: Dishwasher, Disposal, Dryer, Electric Water Heater, Range, Refrigerator, Washer



Call us now

Phone: 727-888-3292

Email: RealtorCandis@gmail.com



Charles Rutenberg Realty, Inc.
THE STANDARD OF EXCELLENCE

Building Details

NewConstructionYN: No

Exterior material: Block

Parking: Driveway

Heating: Central

Roof: Shingle

Miscellaneous

Ownership: Fee Simple **Disclosures:** Flood Disclosure, HOA/PUD/Condo Disclosure, Lead Paint, Seller Property Disclosure

Occupant Type: Vacant **Showing Requirements:** Supra Lock Box, Go Direct, Lock Box Electronic, ShowingTime



Call us now

Phone: 727-888-3292

Email: RealtorCandis@gmail.com



Charles Rutenberg Realty, Inc.
THE STANDARD OF EXCELLENCE