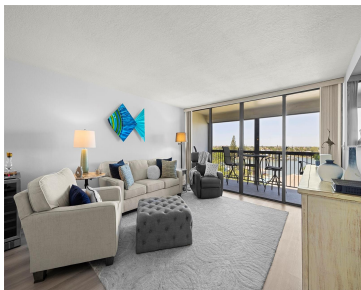
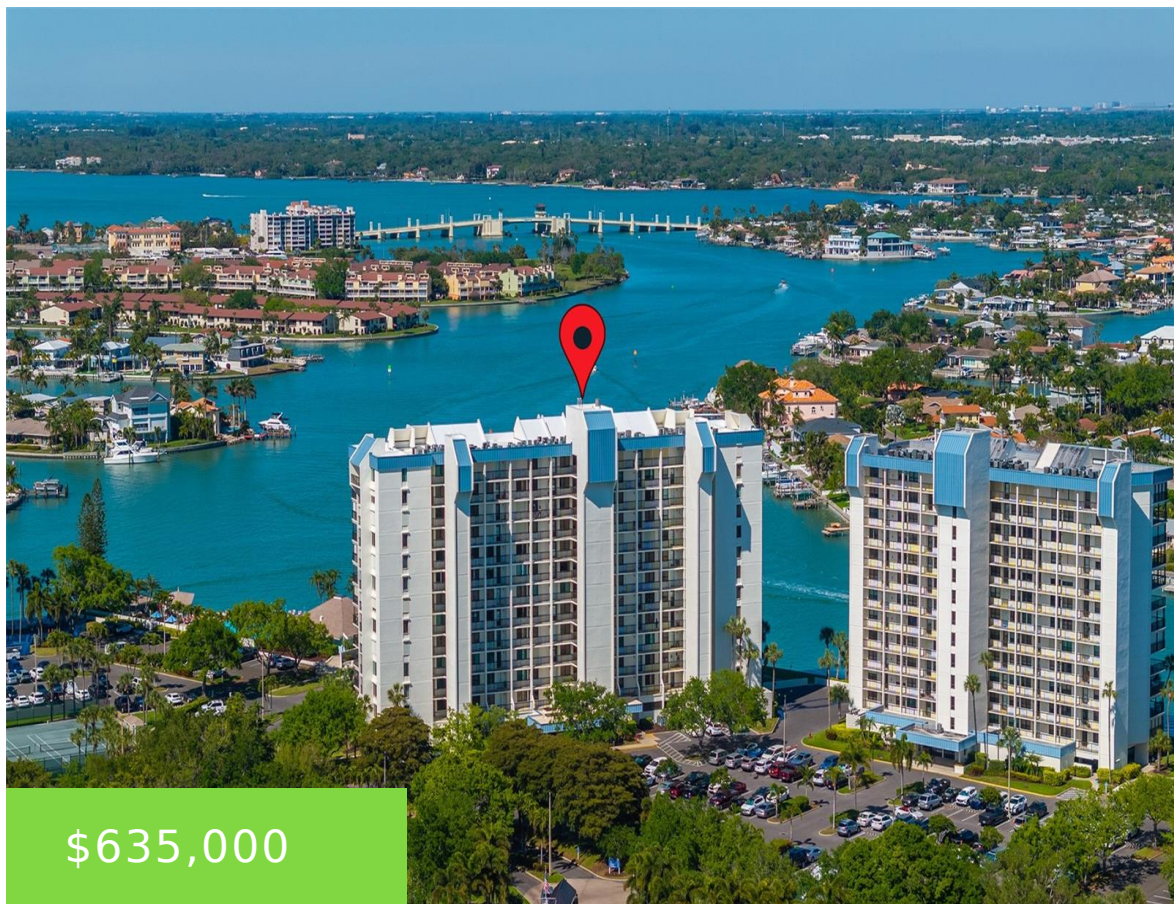


9425 BLIND PASS ROAD ST PETE BEACH FL 33706
<https://candiscarmichael.com>



Step into your very own sanctuary at the Yacht and Tennis Club! Situated on the 6th floor of a stunning high-rise, this 2/2 condo is its own retreat where you can savor every moment of coastal living. Imagine waking up to the gentle sound of waves lapping against the shore and being greeted by panoramic [...]

- 2 beds
- 2 baths
- Residential
- Condominium
- Active
- 1175 sq ft



Call us now

Phone: 727-888-3292
Email: RealtorCandis@gmail.com



Courtesy of

Listing Office: RE/MAX METRO

Status: Active

Office ID: MFR283541001

MLS ID: MFRU8235816

Description

Virtual Tour:

https://www.zillow.com/view-imx/e552764d-f0f7-4980-9252-1f4b86eced85?setAttribution=mls&wl=true&initialViewType=pano&utm_source=dashboard

Basics

Unit Number: 603

Date added: Added 2 months ago

Type: Residential

Bathrooms: 2 baths

Floors: 13 floors

Lot size, sq ft: 0 sq ft

UnitNumber: 603

SubdivisionName: CONSTELLATION THE CONDO

ListAOR: mfrmls

Bathrooms Full: 2

Category: Condominium

Bedrooms: 2 beds

Half baths: 0 half baths

Area, sq ft: 1175 sq ft

Year built: 1978

View: Pool, Tennis Court, Water

ListOfficeName: RE/MAX METRO

Location Details

Township: 31

Road Responsibility: Private Maintained Road

Road Surface Type: Asphalt

Property Features



Call us now

Phone: 727-888-3292

Email: RealtorCandis@gmail.com



Charles Rutenberg Realty, Inc.
THE STANDARD OF EXCELLENCE

Interior Features: Ceiling Fans(s), Kitchen/Family Room Combo, Living Room/Dining Room Combo, Open Floorplan, Primary Bedroom Main Floor, Solid Wood Cabinets, Split Bedroom, Stone Counters, Thermostat, Walk-In Closet(s), Window Treatments

Flooring: Luxury Vinyl, Tile

Patio And Porch Features: Covered, Rear Porch

Spa YN: Yes

Waterfront YN: Yes

Parking Features: Guest, Off Street, Open

Exterior Features: Balcony, Irrigation System, Lighting, Outdoor Grill, Outdoor Shower, Sauna, Sidewalk, Storage, Tennis Court(s)

Window Features: Blinds

Utilities: BB/HS Internet Available, Cable Connected, Electricity Connected, Phone Available, Public, Sewer Connected, Sprinkler Recycled, Street Lights, Underground Utilities, Water Connected

View: Pool, Tennis Court, Water

Sewer: Public Sewer

Heating: Central, Electric

Lot Features: Flood Insurance Required, FloodZone, City Limits, In County, Landscaped, Level, Near Marina, Near Public Transit, Private, Sidewalk, Paved

Appliances: Dishwasher, Dryer, Electric Water Heater, Microwave, Range, Refrigerator, Washer, Water Softener

Laundry Features: Laundry Closet

Pool Features: Gunite, Heated, In Ground

Spa Features: Heated, In Ground

Waterfront Features: Intracoastal Waterway

Pets Allowed: No

Roof: Built-Up

Architectural Style: Traditional

Vegetation: Mature Landscaping, Oak Trees, Trees/Landscaped

Water Source: Public

Cooling: Central Air

Furnished: Unfurnished

Property Details

Subdivision Name: CONSTELLATION THE CONDO

Levels: One

Foundation Details: Slab

Listing Terms: Cash, Conventional

Parcel Number: 25-31-15-17858-000-0603

Direction Faces: Southwest

Construction Materials: Block, Stucco

Association Information



Call us now

Phone: 727-888-3292

Email: RealtorCandis@gmail.com



Charles Rutenberg Realty, Inc.
THE STANDARD OF EXCELLENCE

Association YN: Yes

Association Fee Frequency: Monthly

Association Amenities: Cable TV, Clubhouse, Elevator(s), Fitness Center, Gated, Lobby Key Required, Maintenance, Pickleball Court(s), Pool, Recreation Facilities, Sauna, Security, Shuffleboard Court, Spa/Hot Tub, Storage, Tennis Court(s)

Association Fee: 1020

Association Fee Includes: Guard - 24 Hour, Cable TV, Common Area Taxes, Pool, Escrow Reserves Fund, Insurance, Internet, Maintenance Structure, Maintenance Grounds, Management, Pest Control, Private Road, Recreational Facilities, Security, Sewer, Trash, Water

Community Features: Association Recreation - Owned, Buyer Approval Required, Clubhouse, Deed Restrictions, Fitness Center, Gated Community - Guard, Irrigation-Reclaimed Water, Pool, Sidewalks, Tennis Courts

Fees&Taxes

Tax Year: 2023

Tax Legal Description: CONSTELLATION, THE CONDO UNIT 603

Tax Annual Amount: \$6,593

Tax Lot: 0603

Rooms

Room type	Level
Living Room	First
Kitchen	First
Primary Bedroom	First
Bedroom 2	First

Amenities & Features

Waterfront available: Yes

AttachedGarageYN: No

PoolPrivateYN: No

Spa Features: Heated, In Ground

WindowFeatures: Blinds

PoolFeatures: Gunite, Heated, In Ground

Features: Ceiling Fans(s), Kitchen/Family Room Combo, Living Room/Dining Room Combo, Open Floorplan, Primary Bedroom Main Floor, Solid Wood Cabinets, Split Bedroom, Stone Counters, Thermostat, Walk-In Closet(s), Window Treatments

GarageYN: No

FireplaceYN: No

Cooling: Central Air

CommunityFeatures: Association Recreation - Owned, Buyer Approval Required, Clubhouse, Deed Restrictions, Fitness Center, Gated Community - Guard, Irrigation-Reclaimed Water, Pool, Sidewalks, Tennis Courts

ExteriorFeatures: Balcony, Irrigation System, Lighting, Outdoor Grill, Outdoor Shower, Sauna, Sidewalk, Storage, Tennis Court(s)

Utilities: BB/HS Internet Available, Cable Connected, Electricity Connected, Phone Available, Public, Sewer Connected, Sprinkler Recycled, Street Lights, Underground Utilities, Water Connected

Amenities: Dishwasher, Dryer, Electric Water Heater, Microwave, Range, Refrigerator, Washer, Water Softener

Building Details

ArchitecturalStyle: Traditional

Heating: Central, Electric

Roof: Built-up

NewConstructionYN: No

Exterior material: Block, Stucco

Parking: Guest, Off-street, Open

Miscellaneous

Ownership: Condominium

Occupant Type: Owner

Showing Requirements: ShowingTime

Disclosures: Condominium Disclosure Available, Seller Property Disclosure

Other Structures: Gazebo



Call us now

Phone: 727-888-3292

Email: RealtorCandis@gmail.com



Charles Rutenberg Realty, Inc.
THE STANDARD OF EXCELLENCE