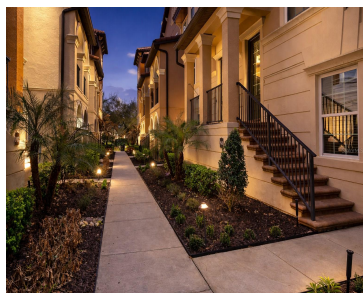


940 LOBELIA DRIVE LAKE MARY FL 32746

<https://candiscarmichael.com>



One or more of the photo(s) have been virtually staged. **NEW PRICE IMPROVEMENT!!** Welcome to this beautiful property located in the guarded community of Fountain Parke in Lake Mary. From the moment you walk in, the layout feels open with lots of light. This three-story townhouse offers 4 bedrooms and 3.5 bathrooms with over 2,100 [...]

- 4 beds
- 4 baths
- Residential
- Townhouse
- Active
- 2168 sq ft



Courtesy of

Listing Office: REAL BROKER, LLC

Status: Active

Office ID: MFR805521714

MLS ID: MFRO6388323



Call us now

Phone: 727-888-3292
 Email: RealtorCandis@gmail.com



Description

Virtual Tour: <https://www.propertypanorama.com/instaview/stellar/O6388323>

Basics

Bathrooms Full: 3

Date added: Added 2 hours ago

Type: Residential

Bathrooms: 4 baths

Area, sq ft: 2168 sq ft

Year built: 2014

ListOfficeName: REAL BROKER, LLC

ListAOR: mfrmls

Bathrooms Half: 1

Category: Townhouse

Bedrooms: 4 beds

Half baths: 1 half bath

Lot size, sq ft: 1190 sq ft

SubdivisionName: FOUNTAIN PARKE AT LAKE MARY PH 2

GarageSpaces: 2

Location Details

Township: 20

Road Surface Type: Asphalt, Paved

Elementary School: Crystal Lake Elementary

Middle Or Junior School: Millennium Middle

High School: Seminole High

Property Features



Call us now

Phone: 727-888-3292

Email: RealtorCandis@gmail.com



Charles Rutenberg Realty, Inc.
THE STANDARD OF EXCELLENCE

Interior Features: Ceiling Fans(s), Crown Molding, Eat-in Kitchen, Kitchen/Family Room Combo, Open Floorplan, Solid Surface Counters, Thermostat, Walk-In Closet(s), Window Treatments

Flooring: Carpet, Ceramic Tile

Patio And Porch Features: Patio

Garage YN: Yes

Garage Spaces: 2

Exterior Features: Balcony, Sidewalk

Security Features: Gated Community

Architectural Style: Mediterranean

Water Source: Public

Cooling: Central Air

Furnished: Unfurnished

Appliances: Convection Oven, Dishwasher, Disposal, Electric Water Heater, Exhaust Fan, Microwave, Range, Refrigerator

Laundry Features: Laundry Room

Parking Features: Garage Faces Rear, Ground Level

Attached Garage YN: Yes

Pets Allowed: Breed Restrictions, Yes

Roof: Tile

Window Features: Blinds

Utilities: BB/HS Internet Available, Cable Available, Electricity Available, Water Available

Sewer: Public Sewer

Heating: Central

Property Details

Subdivision Name: FOUNTAIN PARKE AT LAKE MARY PH 2

Levels: Three Or More

Foundation Details: Slab

Listing Terms: Cash, Conventional, FHA, VA Loan

Parcel Number: 08-20-30-514-0000-0900

Direction Faces: North

Construction Materials: Block, Concrete, Stucco

Association Information



Call us now

Phone: 727-888-3292

Email: RealtorCandis@gmail.com



Charles Rutenberg Realty, Inc.
THE STANDARD OF EXCELLENCE

Association YN: Yes

Association Fee: 552

Association Fee Frequency:
Monthly

Association Fee Includes: Guard - 24 Hour, Pool, Maintenance Structure, Maintenance Grounds, Management, Recreational Facilities, Sewer, Trash, Water

Association Amenities: Fitness Center, Gated, Park, Playground, Tennis Court(s)

Community Features: Clubhouse, Deed Restrictions, Dog Park, Fitness Center, Gated Community - Guard, Tennis Court(s)

Fees&Taxes

Tax Year: 2024

Tax Annual Amount:
\$5,563

Tax Legal Description: LOT 90 FOUNTAIN PARKE AT LAKE MARY PHASE 2 PB 70 PGS 70 - 76

Tax Lot: 90

Rooms



Call us now

Phone: 727-888-3292

Email: RealtorCandis@gmail.com



Charles Rutenberg Realty, Inc.
THE STANDARD OF EXCELLENCE

Room type	Dimensions	Level	Length	Width
Primary Bedroom	14x13	Third	13	14
Bedroom 1	13x13	Third	13	13
Bedroom 2	11x10	Third	10	11
Bathroom 2		Third		
Bedroom 3		Third		
Bedroom 4		First		
Bathroom 1		Third		
Bathroom 3		First		
Bathroom 4		Second		
Kitchen	12x19	Second	19	12
Great Room	16x16	Second	16	16
Den		Second		
Dining Room		Second		

Amenities & Features



Call us now

Phone: 727-888-3292

Email: RealtorCandis@gmail.com



Waterfront available: No

AttachedGarageYN: Yes

PoolPrivateYN: No

Security Features: Gated Community

WindowFeatures: Blinds

Utilities: BB/HS Internet Available, Cable Available, Electricity Available, Water Available

Amenities: Convection Oven, Dishwasher, Disposal, Electric Water Heater, Exhaust Fan, Microwave, Range, Refrigerator

GarageYN: Yes

FireplaceYN: No

Cooling: Central Air

CommunityFeatures: Clubhouse, Deed Restrictions, Dog Park, Fitness Center, Gated Community - Guard, Tennis Court(s)

ExteriorFeatures: Balcony, Sidewalk

Features: Ceiling Fans(s), Crown Molding, Eat-in Kitchen, Kitchen/Family Room Combo, Open Floorplan, Solid Surface Counters, Thermostat, Walk-In Closet(s), Window Treatments

Building Details

ArchitecturalStyle: Mediterranean

Heating: Central

Roof: Tile

NewConstructionYN: No

Exterior material: Block, Concrete, Stucco

Parking: Garage Faces Rear, Ground Level

Miscellaneous

Ownership: Fee Simple

Occupant Type:
Tenant

Showing Requirements: Call Listing Agent, Combination Lock Box, See Remarks, ShowingTime



Call us now

Phone: 727-888-3292

Email: RealtorCandis@gmail.com



Charles Rutenberg Realty, Inc.
THE STANDARD OF EXCELLENCE