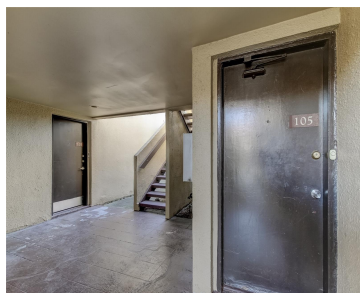


890 VILLAGE DRIVE ST PETERSBURG FL 33716

<https://candiscarmichael.com>



This is one you don't want to miss!! Whether you're a first time home buyer, looking for a vacation property, or rental opportunity, this is the perfect location. Located just minutes from the heart of downtown St. Pete, and the convenient access to Tampa International Airport, this 2 bedroom, 2 bath condo is perfect for [...]

- 2 beds
- 2 baths
- Residential
- Condominium
- Active
- 885 sq ft



Call us now

Phone: 727-888-3292
Email: RealtorCandis@gmail.com



Courtesy of

Listing Office: COASTAL PROPERTIES GROUP INTERNATIONAL

Status: Active

Office ID: MFR260031031

MLS ID: MFRTB8318522

Description

Virtual Tour: <https://www.propertypanorama.com/instaview/stellar/TB8318522>

Basics

Unit Number: 105

Date added: Added 3 weeks ago

Type: Residential

Bathrooms: 2 baths

Floors: 2 floors

Year built: 1974

SubdivisionName: VILLAGE LAKE CONDO

Bathrooms Full: 2

Category: Condominium

Bedrooms: 2 beds

Half baths: 0 half baths

Area, sq ft: 885 sq ft

UnitNumber: 105

ListOfficeName: COASTAL PROPERTIES GROUP INTERNATIONAL

ListAOR: mfrmls

Location Details

Township: 30

Road Surface Type: Paved

Property Features



Call us now

Phone: 727-888-3292

Email: RealtorCandis@gmail.com



Charles Rutenberg Realty, Inc.
THE STANDARD OF EXCELLENCE

Interior Features: Ceiling Fans(s), Living Room/Dining Room Combo, Stone Counters, Window Treatments

Flooring: Ceramic Tile

Pets Allowed: Cats OK, Dogs OK, Number Limit

Roof: Built-Up

Water Source: Public

Cooling: Central Air

Appliances: Range, Refrigerator

Laundry Features: Common Area

Exterior Features: Sidewalk, Tennis Court(s)

Utilities: BB/HS Internet Available, Cable Available, Electricity Connected, Public, Sewer Connected, Street Lights, Water Connected

Sewer: Public Sewer

Heating: Electric

Property Details

Subdivision Name: VILLAGE LAKE CONDO

Levels: One

Foundation Details: Slab

Listing Terms: Cash, Conventional

Parcel Number: 18-30-17-94108-025-1050

Direction Faces: East

Construction Materials: Block

Association Information

Association YN: Yes

Association Fee Frequency: Monthly

Association Fee: 547.45

Association Fee Includes: Cable TV, Pool, Escrow Reserves Fund, Maintenance Structure, Maintenance Grounds, Recreational Facilities, Sewer, Trash, Water

Community Features: Buyer Approval Required, Clubhouse, Community Mailbox, Pool, Sidewalks, Tennis Courts

Fees&Taxes



Call us now

Phone: 727-888-3292

Email: RealtorCandis@gmail.com



Charles Rutenberg Realty, Inc.
THE STANDARD OF EXCELLENCE

Tax Year: 2023

Tax Annual Amount:
\$459

Tax Legal Description: VILLAGE LAKE CONDO BLDG 890, UNIT 105 TOGETHER WITH THE USE OF PARKING SPACE 294

Tax Lot: 00

Rooms

Room type	Dimensions	Level	Length	Width
Living Room	12x13	First	13	12
Dining Room	7x9	First	9	7
Primary Bedroom	11x15	First	15	11
Bedroom 2	12x11	First	11	12
Kitchen	8x11	First	11	8
Bathroom 1	6x5	First	5	6

Amenities & Features



Call us now

Phone: 727-888-3292

Email: RealtorCandis@gmail.com



Waterfront available: No

AttachedGarageYN: No

PoolPrivateYN: No

CommunityFeatures: Buyer Approval Required, Clubhouse, Community Mailbox, Pool, Sidewalks, Tennis Courts

Utilities: BB/HS Internet Available, Cable Available, Electricity Connected, Public, Sewer Connected, Street Lights, Water Connected

Amenities: Range, Refrigerator

GarageYN: No

FireplaceYN: No

Cooling: Central Air

ExteriorFeatures: Sidewalk, Tennis Court(s)

Features: Ceiling Fans(s), Living Room/Dining Room Combo, Stone Counters, Window Treatments

Building Details

NewConstructionYN: No

Exterior material: Block

Heating: Electric

Roof: Built-up

Miscellaneous

Ownership: Condominium **Disclosures:** HOA/PUD/Condo Disclosure, Lead Paint, Seller Property Disclosure

Occupant Type: Vacant **Showing Requirements:** Supra Lock Box, ShowingTime



Call us now

Phone: 727-888-3292

Email: RealtorCandis@gmail.com



Charles Rutenberg Realty, Inc.
THE STANDARD OF EXCELLENCE