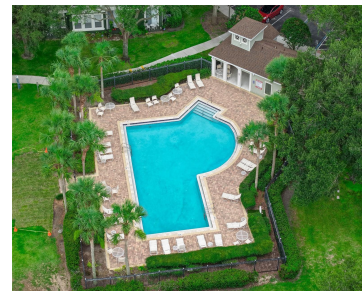


870 ASHWORTH OVERLOOK DRIVE APOPKA FL 32712

<https://candiscarmichael.com>



Welcome to 870 Ashworth Overlook Drive, teamFREDA's newest listing in the highly desirable gated community of Overlook at Parkside, located in the heart of Apopka. This beautifully maintained end-unit condominium offers 3 bedrooms, 2.5 bathrooms, and nearly 2,000 square feet of heated living space. A rare find in this price range, the home also features [...]

- 3 beds
- 3 baths
- Residential
- Townhouse
- Active
- 1998 sq ft



Courtesy of

Listing Office: LPT REALTY, LLC

Status: Active

Office ID: MFR261016803

MLS ID: MFRO6413900

Description



Call us now

Phone: 727-888-3292

Email: RealtorCandis@gmail.com



Charles Rutenberg Realty, Inc.
THE STANDARD OF EXCELLENCE

Basics

Unit Number: A

Bathrooms Half: 1

Category: Townhouse

Bedrooms: 3 beds

Half baths: 1 half bath

Area, sq ft: 1998 sq ft

Year built: 2007

SubdivisionName: OVERLOOK AT PARKSIDE CONDO

GarageSpaces: 2

Bathrooms Full: 2

Date added: Added 2 hours ago

Type: Residential

Bathrooms: 3 baths

Floors: 2 floors

Lot size, sq ft: 1276 sq ft

UnitNumber: A

ListOfficeName: LPT REALTY, LLC

ListAOR: mfrmls

Location Details

Township: 21

Elementary School: Apopka Elem

High School: Apopka High

Road Surface Type: Asphalt

Middle Or Junior School: Wolf Lake Middle

Property Features

Interior Features: Ceiling Fans(s), High Ceilings, Thermostat

Flooring: Carpet, Ceramic Tile

Patio And Porch Features: Patio, Porch

Attached Garage YN: Yes

Pets Allowed: Yes

Utilities: Cable Available, Electricity Connected

Sewer: Public Sewer

Heating: Central

Appliances: Dishwasher, Disposal, Dryer, Microwave, Range, Refrigerator, Washer

Laundry Features: Inside

Garage YN: Yes

Garage Spaces: 2

Roof: Shingle

Water Source: Public

Cooling: Central Air

Furnished: Unfurnished



Call us now

Phone: 727-888-3292

Email: RealtorCandis@gmail.com



Charles Rutenberg Realty, Inc.
THE STANDARD OF EXCELLENCE

Property Details

Subdivision Name: OVERLOOK AT PARKSIDE CONDO

Parcel Number: 05-21-28-6461-23-010

Levels: Two

Direction Faces: North

Foundation Details: Slab

Construction Materials: Block, Stucco

Listing Terms: Cash, Conventional

Association Information

Association YN: Yes

Association Fee: 408.95

Association Fee Frequency: Monthly

Association Fee Includes: Maintenance Structure, Maintenance Grounds

Association Amenities: Gated, Pool

Community Features: Gated Community - No Guard, Pool

Fees&Taxes

Tax Year: 2025

Tax Annual Amount:
\$3,737

Tax Legal Description: OVERLOOK AT PARKSIDE
CONDOMINIUM 8585/07 15 UNIT A BLDG 23

Tax Lot: 010

Rooms



Call us now

Phone: 727-888-3292

Email: RealtorCandis@gmail.com



Charles Rutenberg Realty, Inc.
THE STANDARD OF EXCELLENCE

Room type	Dimensions	Level	Length	Width
Bedroom 2	10x12	Second	12	10
Bedroom 3	10x12	Second	12	10
Kitchen	12x11	First	11	12
Living Room	21x22	First	22	21
Primary Bedroom	18x15	Second	15	18

Amenities & Features

Waterfront available: No

AttachedGarageYN: Yes

PoolPrivateYN: No

CommunityFeatures: Gated Community - No Guard, Pool

Features: Ceiling Fans(s), High Ceilings, Thermostat

GarageYN: Yes

FireplaceYN: No

Cooling: Central Air

Utilities: Cable Available, Electricity Connected

Amenities: Dishwasher, Disposal, Dryer, Microwave, Range, Refrigerator, Washer

Building Details

NewConstructionYN: No

Exterior material: Block, Stucco

Heating: Central

Roof: Shingle

Miscellaneous



Call us now

Phone: 727-888-3292

Email: RealtorCandis@gmail.com



Charles Rutenberg Realty, Inc.
THE STANDARD OF EXCELLENCE

Ownership: Condominium

Occupant Type: Vacant

Other Equipment: Irrigation Equipment

Showing Requirements: ShowingTime



Call us now

Phone: 727-888-3292

Email: RealtorCandis@gmail.com



Charles Rutenberg Realty, Inc.
THE STANDARD OF EXCELLENCE