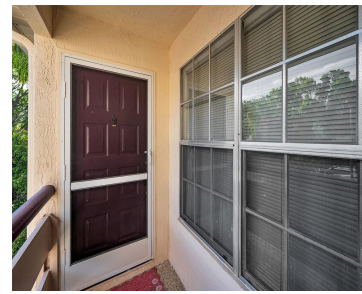


7837 HARDWICK DRIVE NEW PORT RICHEY FL 34653

<https://candiscarmichael.com>



Welcome to this beautifully maintained FURNISHED 2-bedroom, 2-bath second floor condo in Millpond Trace, New Port Richey, FL, a perfect blend of comfort, style, and convenience. This light-filled unit features modern paint colors and an open floor plan with a spacious living area highlighted by a vaulted ceiling and sliding glass doors that lead to [...]

- 2 beds
- 2 baths
- Residential
- Condominium
- Active
- 1025 sq ft



Courtesy of

Listing Office: RE/MAX CHAMPIONS

Status: Active

Office ID: MFR285513935

MLS ID: MFRW7885299



Call us now

Phone: 727-888-3292

Email: RealtorCandis@gmail.com



Charles Rutenberg Realty, Inc.
THE STANDARD OF EXCELLENCE

Description

Virtual Tour: <https://virtual-tour.aryeo.com/sites/rppqojny/unbranded>

Basics

Unit Number: 327

Date added: Added 3 hours ago

Type: Residential

Bathrooms: 2 baths

Floors: 1 floor

Lot size, sq ft: 1058 sq ft

UnitNumber: 327

ListOfficeName: RE/MAX CHAMPIONS

Bathrooms Full: 2

Category: Condominium

Bedrooms: 2 beds

Half baths: 0 half baths

Area, sq ft: 1025 sq ft

Year built: 1988

SubdivisionName: MILLPOND TRACE CONDO

ListAOR: mfrmls

Location Details

Township: 26S

Road Surface Type: Paved

Property Features

Interior Features: Ceiling Fans(s), Eat-in Kitchen, Walk-In Closet(s)

Flooring: Carpet, Tile

Patio And Porch Features: Patio

Roof: Shingle

Water Source: Public

Cooling: Central Air

Furnished: Furnished

Appliances: Dishwasher, Range, Refrigerator

Laundry Features: Inside, Laundry Closet

Exterior Features: Balcony, Sliding Doors

Utilities: Electricity Connected, Public, Sewer Connected, Water Connected

Sewer: Public Sewer

Heating: Central



Call us now

Phone: 727-888-3292

Email: RealtorCandis@gmail.com



Charles Rutenberg Realty, Inc.
THE STANDARD OF EXCELLENCE

Property Details

Subdivision Name: MILLPOND TRACE CONDO

Parcel Number: 16-26-15-004F-00000-3270

Levels: One

Direction Faces: West

Foundation Details: Other

Construction Materials: Block, Stucco

Listing Terms: Cash, Conventional, FHA, VA Loan

Association Information

Association Fee Includes: Pool

Association Amenities: Clubhouse, Pool

Community Features: Clubhouse, Pool

Fees&Taxes

Tax Year: 2025

**Tax Annual
Amount:** \$2,144

Tax Legal Description: MILLPOND TRACE A CONDOMINIUM PHASE 3 CB
4 PG 102-104 UNIT 327 AND COMMON ELEMENTS OR 1790 PG 154

Rooms



Call us now

Phone: 727-888-3292

Email: RealtorCandis@gmail.com



Charles Rutenberg Realty, Inc.
THE STANDARD OF EXCELLENCE

Room type	Dimensions	Level	Length	Width
Living Room	13.2x13	First	13	13.2
Kitchen	10.11x13	First	13	10.11
Primary Bedroom	17.3x11.9	First	11.9	17.3
Bedroom 2	12.1x11.4	First	11.4	12.1

Amenities & Features

Waterfront available: No

AttachedGarageYN: No

PoolPrivateYN: No

CommunityFeatures: Clubhouse, Pool

Utilities: Electricity Connected, Public, Sewer Connected, Water Connected

Amenities: Dishwasher, Range, Refrigerator

GarageYN: No

FireplaceYN: No

Cooling: Central Air

ExteriorFeatures: Balcony, Sliding Doors

Features: Ceiling Fans(s), Eat-in Kitchen, Walk-In Closet(s)

Building Details

NewConstructionYN: No

Exterior material: Block, Stucco

Heating: Central

Roof: Shingle

Miscellaneous

Ownership: Condominium

Showing Requirements: ShowingTime

Occupant Type: Owner



Call us now

Phone: 727-888-3292

Email: RealtorCandis@gmail.com



Charles Rutenberg Realty, Inc.
THE STANDARD OF EXCELLENCE