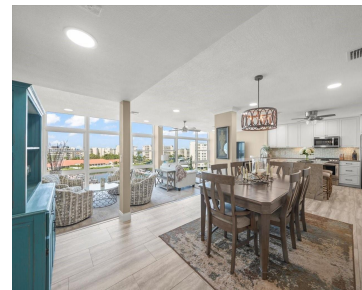
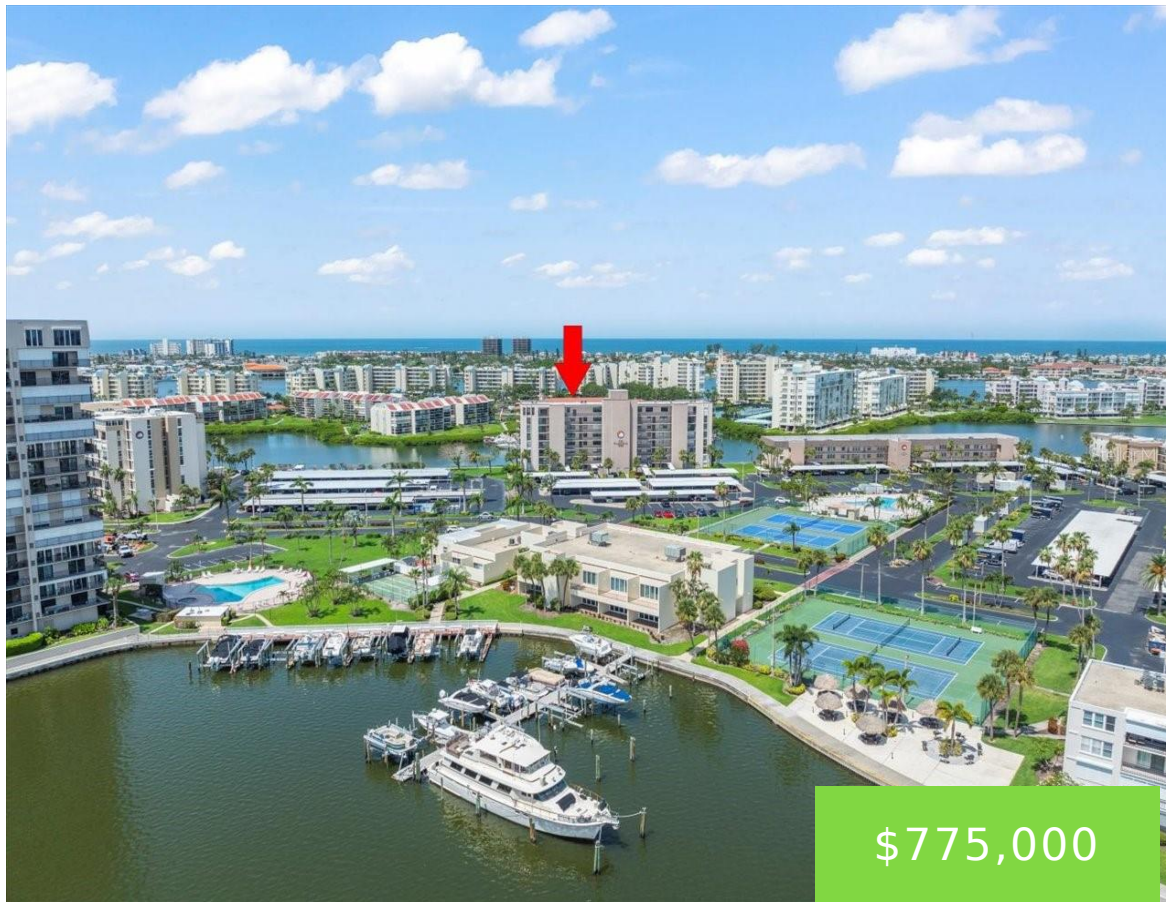


7600 SUN ISLAND DRIVE SOUTH PASADENA FL 33707

<https://candiscarmichael.com>



\$775,000

PENTHOUSE PARADISE! NO DAMAGE IN PRESIDENTIAL BUILDING FROM HURRICANES. This is a must see. SPECTACULAR 55+ waterfront living in the exclusive Bay Island 24 hour guard attended/gated community! This is an opportunity to own a penthouse unit in the Presidential building with wide open Gulf and Intercoastal water views that reach from Treasure Island to [...]

- 3 beds
- 4 baths
- Residential
- Condominium
- Active
- 2535 sq ft



Courtesy of

Listing Office: COLDWELL BANKER REALTY

Status: Active

Office ID: MFR283516202

MLS ID: MFRTB8405809



Call us now

Phone: 727-888-3292

Email: RealtorCandis@gmail.com



Charles Rutenberg Realty, Inc.
THE STANDARD OF EXCELLENCE

Description

Virtual Tour: <https://www.propertypanorama.com/instaview/stellar/TB8405809>

Basics

Unit Number: 804

Bathrooms Half: 1

Category: Condominium

Bedrooms: 3 beds

Half baths: 1 half bath

Area, sq ft: 2535 sq ft

Year built: 1979

View: Water

ListOfficeName: COLDWELL BANKER REALTY

Bathrooms Full: 3

Date added: Added 3 hours ago

Type: Residential

Bathrooms: 4 baths

Floors: 1 floor

Lot size, sq ft: 59092 sq ft

UnitNumber: 804

SubdivisionName: BAY ISLAND GROUP 14

ListAOR: mfrmls

Location Details

Township: 31

Road Responsibility: Private Maintained Road

Middle Or Junior School: Azalea Middle-PN

Road Surface Type: Asphalt

Elementary School: Azalea Elementary-PN

High School: Boca Ciega High-PN

Property Features



Call us now

Phone: 727-888-3292

Email: RealtorCandis@gmail.com



Charles Rutenberg Realty, Inc.
THE STANDARD OF EXCELLENCE

Interior Features: Built-in Features, Ceiling Fans(s), Crown Molding, High Ceilings, L Dining, Open Floorplan, Primary Bedroom Main Floor, Solid Surface Counters, Split Bedroom, Stone Counters, Thermostat, Walk-In Closet(s), Window Treatments

Flooring: Carpet, Luxury Vinyl

Parking Features: Assigned, Covered

Carport Spaces: 2

Exterior Features: Sidewalk, Storage, Tennis Court(s)

Utilities: BB/HS Internet Available, Cable Connected, Electricity Connected, Public, Sewer Connected, Sprinkler Recycled, Underground Utilities, Water Connected

Water Source: Public

Cooling: Central Air

Furnished: Negotiable

Appliances: Bar Fridge, Convection Oven, Cooktop, Dishwasher, Disposal, Dryer, Electric Water Heater, Exhaust Fan, Ice Maker, Microwave, Range, Range Hood, Refrigerator, Washer, Wine Refrigerator

Laundry Features: Laundry Room

Carport YN: Yes

Pets Allowed: Dogs OK, Size Limit

Roof: Membrane

View: Water

Sewer: Public Sewer

Heating: Central, Electric

Property Details

Subdivision Name: BAY ISLAND GROUP
14

Levels: Three Or More

Foundation Details: Slab

Listing Terms: Cash, Conventional

Parcel Number: 30-31-16-03625-000-8040

Direction Faces: East

Construction Materials: Cement Siding, Concrete

Property Condition: Completed

Association Information



Call us now

Phone: 727-888-3292

Email: RealtorCandis@gmail.com



Charles Rutenberg Realty, Inc.
THE STANDARD OF EXCELLENCE

Association YN: Yes

Association Fee: 1697

Association Fee Frequency: Monthly

Association Fee Includes: Guard - 24 Hour, Cable TV, Common Area Taxes, Pool, Escrow Reserves Fund, Insurance, Internet, Maintenance Structure, Maintenance Grounds, Maintenance, Management, Pest Control, Private Road, Recreational Facilities, Security, Sewer, Trash, Water

Association Amenities: Elevator(s), Fitness Center, Gated, Pickleball Court(s), Pool, Recreation Facilities, Sauna, Shuffleboard Court, Spa/Hot Tub, Tennis Court(s)

Community Features: Association Recreation - Owned, Buyer Approval Required, Clubhouse, Fitness Center, Gated Community - Guard, Golf Carts OK, No Truck/RV/Motorcycle Parking, Pool, Sidewalks, Tennis Court(s), Street Lights

Fees&Taxes

Tax Year: 2024

Tax Annual Amount: \$6,292

Tax Legal Description: BAY ISLAND GROUP NO 14 PENTHOUSE 804

Tax Lot: 0810

Rooms



Call us now

Phone: 727-888-3292

Email: RealtorCandis@gmail.com



Charles Rutenberg Realty, Inc.
THE STANDARD OF EXCELLENCE

Room type	Dimensions	Level	Length	Width
Great Room	28x16	First	16	28
Dining Room	11x18	First	18	11
Kitchen	9x12.5	First	12.5	9
Primary Bedroom	18.5x14	First	14	18.5
Bathroom 1	11.14x13.3	First	13.3	11.14
Bathroom 2	19.5x14.5	First	14.5	19.5

Amenities & Features

Waterfront available: No

AttachedGarageYN: No

PoolPrivateYN: No

CommunityFeatures: Association Recreation - Owned, Buyer Approval Required, Clubhouse, Fitness Center, Gated Community - Guard, Golf Carts OK, No Truck/RV/Motorcycle Parking, Pool, Sidewalks, Tennis Court(s), Street Lights

Utilities: BB/HS Internet Available, Cable Connected, Electricity Connected, Public, Sewer Connected, Sprinkler Recycled, Underground Utilities, Water Connected

Amenities: Bar Fridge, Convection Oven, Cooktop, Dishwasher, Disposal, Dryer, Electric Water Heater, Exhaust Fan, Ice Maker, Microwave, Range, Range Hood, Refrigerator, Washer, Wine Refrigerator

GarageYN: No

FireplaceYN: No

Cooling: Central Air

ExteriorFeatures: Sidewalk, Storage, Tennis Court(s)

Features: Built-in Features, Ceiling Fans(s), Crown Molding, High Ceilings, L Dining, Open Floorplan, Primary Bedroom Main Floor, Solid Surface Counters, Split Bedroom, Stone Counters, Thermostat, Walk-In Closet(s), Window Treatments



Call us now

Phone: 727-888-3292

Email: RealtorCandis@gmail.com



Charles Rutenberg Realty, Inc.
THE STANDARD OF EXCELLENCE

Building Details

NewConstructionYN: No

Exterior material: Cement Siding, Concrete

Parking: Assigned, Covered

Heating: Central, Electric

Roof: Membrane

Miscellaneous

Ownership: Condominium

Occupant Type:
Owner

Showing Requirements: 24 Hour Notice, Appointment Only,
ShowingTime



Call us now

Phone: 727-888-3292

Email: RealtorCandis@gmail.com



Charles Rutenberg Realty, Inc.
THE STANDARD OF EXCELLENCE