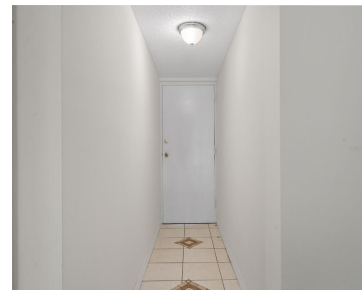
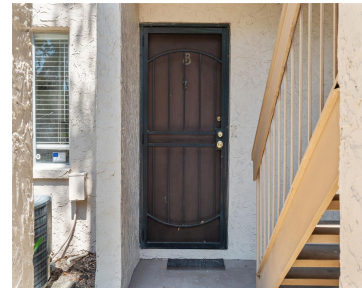


7505 PITCH PINE CIRCLE TAMPA FL 33617

<https://candiscarmichael.com>



Rarely Available FIRST FLOOR UNIT !! Affordable Living at its Finest ! This spacious All Ages Condo is perfect as a primary residence, vacation home, OR as a potentially great rental investment ! NEW ROOF in 2022 ! This 2 bedroom, 1 bathroom first floor unit has a fantastic layout and many great updates not [...]

- 2 beds
- 1 bath
- Residential
- Condominium
- Active
- 1085 sq ft



Courtesy of

Listing Office: EXP REALTY LLC

Status: Active

Office ID: MFR261010944

MLS ID: MFRA4666550



Call us now

Phone: 727-888-3292

Email: RealtorCandis@gmail.com



Charles Rutenberg Realty, Inc.
THE STANDARD OF EXCELLENCE

Basics

Unit Number: 119

Date added: Added 2 hours ago

Type: Residential

Bathrooms: 1 bath

Floors: 1 floor

Lot size, sq ft: 2 sq ft

UnitNumber: 119

ListOfficeName: EXP REALTY LLC

Bathrooms Full: 1

Category: Condominium

Bedrooms: 2 beds

Half baths: 0 half baths

Area, sq ft: 1085 sq ft

Year built: 1981

SubdivisionName: PLACE ONE A CONDO

ListAOR: mfrmls

Location Details

Township: 28

Road Surface Type: Paved

Property Features

Interior Features: Living Room/Dining Room Combo, Primary Bedroom Main Floor, Stone Counters, Thermostat

Flooring: Laminate, Tile

Pets Allowed: Size Limit

Roof: Shingle

Water Source: Public

Cooling: Central Air

Appliances: Dishwasher, Electric Water Heater, Microwave, Range, Refrigerator

Laundry Features: Laundry Closet

Exterior Features: Sidewalk, Sliding Doors

Utilities: BB/HS Internet Available, Cable Connected, Electricity Connected, Sewer Connected, Water Connected

Sewer: Public Sewer

Heating: Central, Electric

Property Details



Call us now

Phone: 727-888-3292

Email: RealtorCandis@gmail.com



Charles Rutenberg Realty, Inc.
THE STANDARD OF EXCELLENCE

Subdivision Name: PLACE ONE A CONDO

Levels: One

Foundation Details: Slab

Listing Terms: Cash

Parcel Number: U-27-28-19-1KP-000000-00119.0

Direction Faces: South

Construction Materials: Block, Stucco, Frame

Association Information

Association YN: Yes

Association Fee Frequency: Monthly

Association Fee: 554.01

Association Fee Includes: Pool, Escrow Reserves Fund, Insurance, Maintenance Structure, Recreational Facilities, Sewer, Trash, Water

Community Features: Clubhouse, Community Mailbox, Playground, Pool, Sidewalks

Fees&Taxes

Tax Year: 2024

Tax Annual Amount: \$73

Tax Legal Description: PLACE ONE A CONDOMINIUM UNIT 119 TYPE D .00487% UNDIV INTEREST IN COMMON ELEMENTS EXPENSES AND SURPLUS

Tax Lot: 7505

Rooms



Call us now

Phone: 727-888-3292

Email: RealtorCandis@gmail.com



Charles Rutenberg Realty, Inc.
THE STANDARD OF EXCELLENCE

Room type	Dimensions	Level	Length	Width
Primary Bedroom	15x12	First	12	15
Primary Bathroom	11x6	First	6	11
Kitchen	8x10	First	10	8
Living Room	15x14	First	14	15
Bedroom 2	15x11	First	11	15
Balcony/Porch/Lanai	9x5	First	5	9

Amenities & Features

Waterfront available: No

AttachedGarageYN: No

PoolPrivateYN: No

CommunityFeatures: Clubhouse, Community Mailbox, Playground, Pool, Sidewalks

Utilities: BB/HS Internet Available, Cable Connected, Electricity Connected, Sewer Connected, Water Connected

Amenities: Dishwasher, Electric Water Heater, Microwave, Range, Refrigerator

GarageYN: No

FireplaceYN: No

Cooling: Central Air

ExteriorFeatures: Sidewalk, Sliding Doors

Features: Living Room/Dining Room Combo, Primary Bedroom Main Floor, Stone Counters, Thermostat

Building Details

NewConstructionYN: No

Exterior material: Block, Frame, Stucco

Heating: Central, Electric

Roof: Shingle



Call us now

Phone: 727-888-3292

Email: RealtorCandis@gmail.com



Charles Rutenberg Realty, Inc.
THE STANDARD OF EXCELLENCE

Miscellaneous

Ownership: Condominium

Occupant Type: Vacant

Showing Requirements: Appointment Only, Lockbox, ShowingTime



Call us now

Phone: 727-888-3292

Email: RealtorCandis@gmail.com



Charles Rutenberg Realty, Inc.
THE STANDARD OF EXCELLENCE