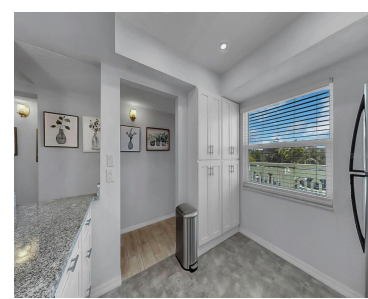
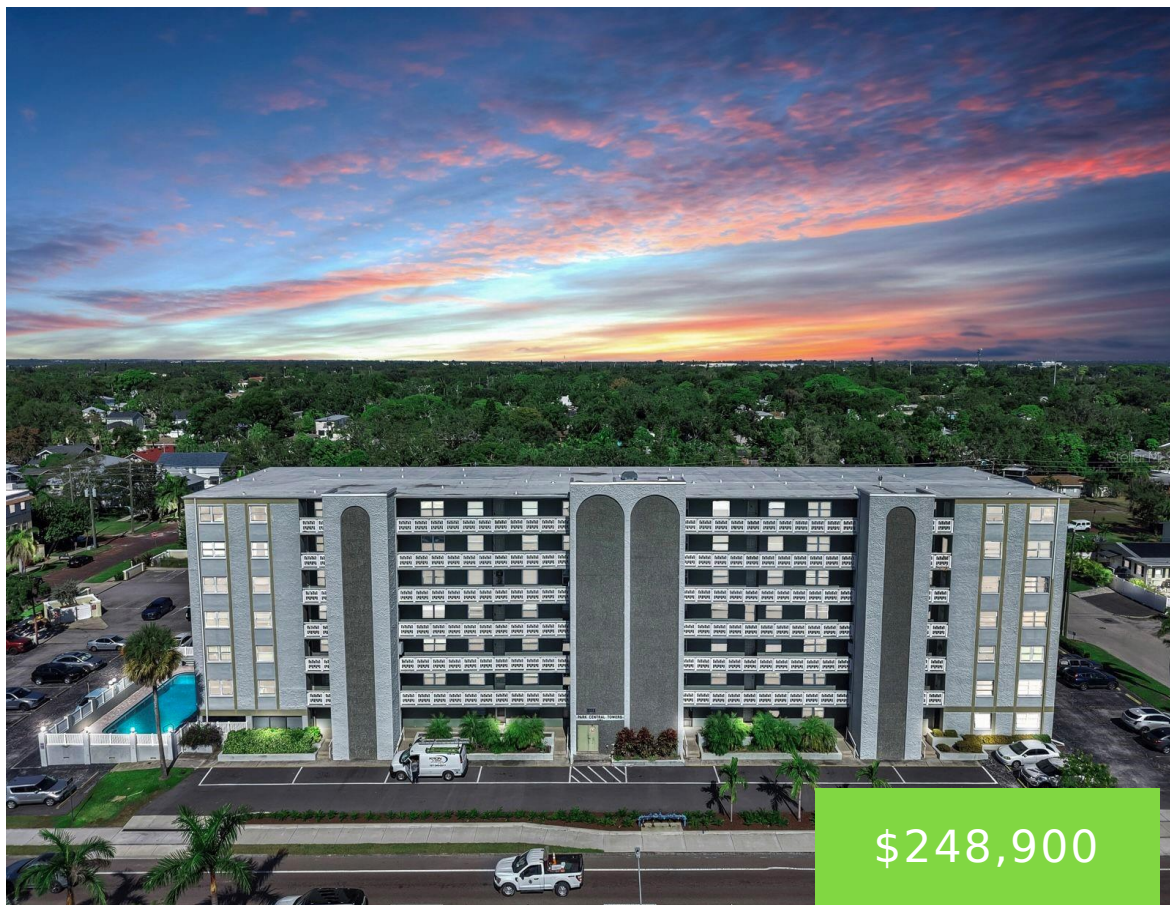


7321 CENTRAL AVENUE ST PETERSBURG FL 33710

<https://candiscarmichael.com>



Welcome to Park Central Tower in vibrant St. Petersburg! This beautifully maintained 2-bedroom, 1-bath condo offers the perfect combination of comfort, convenience, and Florida lifestyle. Located on the 3rd floor and offered fully furnished, step inside to discover an updated kitchen with modern finishes, an open-concept living and dining area, and abundant natural light throughout. [...]

- 2 beds
- 1 bath
- Residential
- Condominium
- Active
- 1085 sq ft



Courtesy of

Listing Office: EXP REALTY LLC

Status: Active

Office ID: MFR261010944

MLS ID: MFRTB8511142



Call us now

Phone: 727-888-3292

Email: RealtorCandis@gmail.com



Basics

Unit Number: 307

Date added: Added 3 hours ago

Type: Residential

Bathrooms: 1 bath

Floors: 7 floors

Lot size, sq ft: 0 sq ft

UnitNumber: 307

ListOfficeName: EXP REALTY LLC

Bathrooms Full: 1

Category: Condominium

Bedrooms: 2 beds

Half baths: 0 half baths

Area, sq ft: 1085 sq ft

Year built: 1973

SubdivisionName: PARK CENTRAL TOWERS CONDO

ListAOR: mfrmls

Location Details

Township: 31

Road Surface Type: Paved

Property Features

Interior Features: Ceiling Fans(s), Living Room/Dining Room Combo, Open Floorplan, Stone Counters, Walk-In Closet(s)

Flooring: Tile, Vinyl

Pets Allowed: No

Roof: Other

Water Source: Public

Cooling: Central Air

Furnished: Furnished

Appliances: Dishwasher, Microwave, Range, Refrigerator

Laundry Features: Inside

Exterior Features: Lighting, Sliding Doors, Storage

Utilities: Electricity Available, Electricity Connected, Public, Sewer Available, Sewer Connected, Water Available, Water Connected

Sewer: Public Sewer

Heating: Central

Property Details



Call us now

Phone: 727-888-3292

Email: RealtorCandis@gmail.com



Charles Rutenberg Realty, Inc.
THE STANDARD OF EXCELLENCE

Subdivision Name: PARK CENTRAL TOWERS
CONDO

Levels: One

Foundation Details: Slab

Listing Terms: Cash, Conventional

Parcel Number: 19-31-16-66303-000-3070

Direction Faces: South

Construction Materials: Block, Stucco

Association Information

Association YN: Yes

Association Fee Includes: Cable TV, Pool, Escrow Reserves Fund, Maintenance Structure, Maintenance Grounds, Management, Recreational Facilities, Sewer, Trash, Water

Association Fee Frequency:
Monthly

Community Features: Buyer Approval Required, Fitness Center, Pool, Sidewalks

Fees&Taxes

Tax Year: 2025

Tax Legal Description: PARK CENTRAL TOWERS CONDO APT
307

Tax Annual Amount: \$1,197

Tax Lot: 307

Rooms



Call us now

Phone: 727-888-3292

Email: RealtorCandis@gmail.com



Charles Rutenberg Realty, Inc.
THE STANDARD OF EXCELLENCE

Room type	Dimensions	Level	Length	Width
Kitchen	9x11	First	11	9
Dining Room	13x10	First	10	13
Living Room	13x14	First	14	13
Primary Bedroom	12x14	First	14	12
Bedroom 2	12x11	First	11	12
Balcony/Porch/Lanai	21x5	First	5	21

Amenities & Features

Waterfront available: No

AttachedGarageYN: No

PoolPrivateYN: No

CommunityFeatures: Buyer Approval Required, Fitness Center, Pool, Sidewalks

Utilities: Electricity Available, Electricity Connected, Public, Sewer Available, Sewer Connected, Water Available, Water Connected

Amenities: Dishwasher, Microwave, Range, Refrigerator

GarageYN: No

FireplaceYN: No

Cooling: Central Air

ExteriorFeatures: Lighting, Sliding Doors, Storage

Features: Ceiling Fans(s), Living Room/Dining Room Combo, Open Floorplan, Stone Counters, Walk-In Closet(s)

Building Details



Call us now

Phone: 727-888-3292

Email: RealtorCandis@gmail.com



Charles Rutenberg Realty, Inc.
THE STANDARD OF EXCELLENCE

NewConstructionYN: No

Exterior material: Block, Stucco

Heating: Central

Roof: Other

Miscellaneous

Ownership: Condominium

Occupant Type:
Vacant

Showing Requirements: Appointment Only, Combination Lock Box,
ShowingTime



Call us now

Phone: 727-888-3292

Email: RealtorCandis@gmail.com



Charles Rutenberg Realty, Inc.
THE STANDARD OF EXCELLENCE