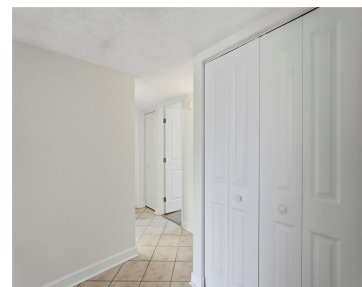


724 115 AVENUE ST PETERSBURG FL 33716

<https://candiscarmichael.com>



Welcome to this beautifully renovated 2-bedroom, 2-bath first-floor condo in the desirable Peppertree Lake community, where no detail has been overlooked. From the moment you step inside, you'll appreciate the thoughtful upgrades and clean, modern feel throughout. This move-in ready home features all new appliances, tile and luxury vinyl flooring throughout, a new HVAC system, [...]

- 2 beds
- 2 baths
- Residential
- Condominium
- Active
- 1100 sq ft



Courtesy of

Listing Office: SMITH & ASSOCIATES REAL ESTATE

Status: Active

Office ID: MFR260033129

MLS ID: MFRTB8503810



Call us now

Phone: 727-888-3292

Email: RealtorCandis@gmail.com



Charles Rutenberg Realty, Inc.
THE STANDARD OF EXCELLENCE

Basics

Unit Number: 2205

Date added: Added 4 hours ago

Type: Residential

Bathrooms: 2 baths

Floors: 2 floors

Lot size, sq ft: 196100 sq ft

UnitNumber: 2205

SubdivisionName: PEPPERTREE LAKE CONDO

ListAOR: mfrmls

Bathrooms Full: 2

Category: Condominium

Bedrooms: 2 beds

Half baths: 0 half baths

Area, sq ft: 1100 sq ft

Year built: 1974

View: Water

ListOfficeName: SMITH & ASSOCIATES REAL ESTATE

Location Details

Township: 30

Elementary School: Pinellas Park Elementary-PN

High School: Pinellas Park High-PN

Road Surface Type: Asphalt

Middle Or Junior School: Fitzgerald Middle-PN

Property Features

Interior Features: Ceiling Fans(s), Walk-In Closet(s)

Flooring: Luxury Vinyl, Tile

Pool Private YN: Yes

Pets Allowed: Yes

Roof: Shingle

View: Water

Sewer: Public Sewer

Heating: Central

Appliances: Electric Water Heater, Range, Refrigerator

Laundry Features: Gas Dryer Hookup, In Kitchen, Washer Hookup

Pool Features: In Ground

Exterior Features: Balcony

Utilities: Electricity Connected, Sewer Connected, Water Connected

Water Source: Public

Cooling: Central Air

Furnished: Unfurnished



Call us now

Phone: 727-888-3292

Email: RealtorCandis@gmail.com



Charles Rutenberg Realty, Inc.
THE STANDARD OF EXCELLENCE

Property Details

Subdivision Name: PEPPERTREE LAKE CONDO

Levels: One

Foundation Details: Slab

Parcel Number: 18-30-17-68417-022-22055

Direction Faces: North

Construction Materials: Stucco

Association Information

Association YN: Yes

Association Fee Includes: Cable TV, Pool, Insurance, Internet, Maintenance Structure, Maintenance Grounds, Maintenance, Management, Recreational Facilities, Sewer, Trash

Association Fee Frequency:
Monthly

Community Features: Clubhouse, Deed Restrictions, Pool, Tennis Court(s)

Fees&Taxes

Tax Year: 2025

Tax Legal Description: PEPPERTREE LAKE CONDO BLDG 22, SUITE 2205 TOGETHER WITH THE USE OF PARKING SPACE 34

Tax Annual Amount:
\$440

Tax Lot: 2205

Rooms



Call us now

Phone: 727-888-3292

Email: RealtorCandis@gmail.com



Charles Rutenberg Realty, Inc.
THE STANDARD OF EXCELLENCE

Room type	Dimensions	Level	Length	Width
Primary Bedroom	11x15	First	15	11
Bedroom 2	10x11	First	11	10
Living Room	13x18	First	18	13
Kitchen		First		

Amenities & Features

Waterfront available: No

AttachedGarageYN: No

PoolPrivateYN: Yes

CommunityFeatures: Clubhouse, Deed Restrictions, Pool, Tennis Court(s)

PoolFeatures: In Ground

Features: Ceiling Fans(s), Walk-In Closet(s)

GarageYN: No

FireplaceYN: No

Cooling: Central Air

ExteriorFeatures: Balcony

Utilities: Electricity Connected, Sewer Connected, Water Connected

Amenities: Electric Water Heater, Range, Refrigerator

Building Details

NewConstructionYN: No

Exterior material: Stucco

Heating: Central

Roof: Shingle

Miscellaneous



Call us now

Phone: 727-888-3292

Email: RealtorCandis@gmail.com



Charles Rutenberg Realty, Inc.
THE STANDARD OF EXCELLENCE

Ownership: Fee Simple

Occupant Type: Vacant

Showing Requirements: Combination Lock Box, ShowingTime



Call us now

Phone: 727-888-3292

Email: RealtorCandis@gmail.com



Charles Rutenberg Realty, Inc.
THE STANDARD OF EXCELLENCE