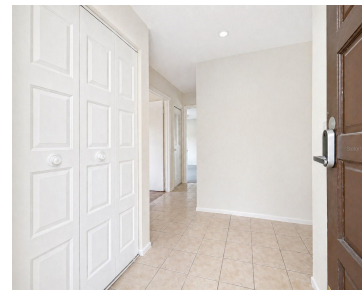
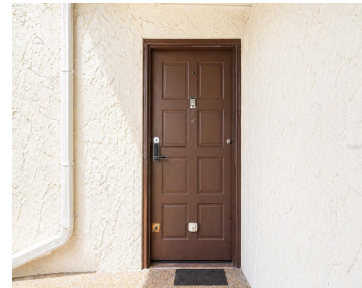


723 115TH AVENUE ST PETERSBURG FL 33716

<https://candiscarmichael.com>



One or more photo(s) has been virtually staged. Tucked inside a quiet, well-established community, this second-floor condo offers a comfortable and practical living option with easy access to I-275, Tampa, downtown St. Petersburg, and the airports. The second-floor location adds an extra layer of comfort, a bit more privacy, and added peace of mind during [...]

- 2 beds
- 2 baths
- Residential
- Condominium
- Active
- 1100 sq ft



Courtesy of

Listing Office: DALTON WADE INC

Status: Active

Office ID: MFR260031661

MLS ID: MFRTB8501568



Call us now

Phone: 727-888-3292

Email: RealtorCandis@gmail.com



Charles Rutenberg Realty, Inc
THE STANDARD OF EXCELLENCE

Basics

Unit Number: 2106

Date added: Added 2 hours ago

Type: Residential

Bathrooms: 2 baths

Floors: 1 floor

Lot size, sq ft: 5 sq ft

UnitNumber: 2106

ListOfficeName: DALTON WADE INC

Bathrooms Full: 2

Category: Condominium

Bedrooms: 2 beds

Half baths: 0 half baths

Area, sq ft: 1100 sq ft

Year built: 1974

SubdivisionName: PEPPERTREE LAKE CONDO

ListAOR: mfrmls

Location Details

Township: 30

Road Surface Type: Paved

Property Features

Interior Features: Ceiling Fans(s), Living Room/Dining Room Combo, Thermostat, Walk-In Closet(s)

Flooring: Carpet, Parquet, Tile, Vinyl

Pets Allowed: Yes

Roof: Shingle

Water Source: Public

Cooling: Central Air

Furnished: Unfurnished

Appliances: Dishwasher, Dryer, Electric Water Heater, Exhaust Fan, Range, Refrigerator, Washer

Laundry Features: Inside

Exterior Features: Sliding Doors, Tennis Court(s)

Utilities: Cable Connected, Electricity Connected, Public, Sewer Connected, Water Connected

Sewer: Public Sewer

Heating: Electric

Property Details



Call us now

Phone: 727-888-3292

Email: RealtorCandis@gmail.com



Charles Rutenberg Realty, Inc.
THE STANDARD OF EXCELLENCE

Subdivision Name: PEPPERTREE LAKE CONDO

Parcel Number: 18-30-17-68417-021-2106

Levels: One

Direction Faces: South

Foundation Details: Slab

Construction Materials: Block, Stucco

Association Information

Association YN: Yes

Association Fee: 614

Association Fee Frequency: Monthly

Association Fee Includes: Cable TV, Pool, Escrow Reserves Fund, Insurance, Internet, Maintenance Grounds, Management, Pest Control, Recreational Facilities, Sewer, Trash, Water

Community Features: Association Recreation - Owned, Community Mailbox, Tennis Court(s)

Fees&Taxes

Tax Year: 2025

Tax Annual Amount:
\$2,926

Tax Legal Description: PEPPERTREE LAKE CONDO BLDG 21, SUITE 2106 TOGETHER WITH THE USE OF PARKING SPACE 63

Rooms



Call us now

Phone: 727-888-3292

Email: RealtorCandis@gmail.com



Charles Rutenberg Realty, Inc.
THE STANDARD OF EXCELLENCE

Room type	Dimensions	Level	Length	Width
Living Room	16x20	First	20	16
Primary Bedroom	15x11	First	11	15
Bedroom 2	11x10	First	10	11
Kitchen	8x8	First	8	8
Dining Room	7x8	First	8	7

Amenities & Features

Waterfront available: No

AttachedGarageYN: No

PoolPrivateYN: No

CommunityFeatures: Association Recreation - Owned, Community Mailbox, Tennis Court(s)

Utilities: Cable Connected, Electricity Connected, Public, Sewer Connected, Water Connected

Amenities: Dishwasher, Dryer, Electric Water Heater, Exhaust Fan, Range, Refrigerator, Washer

GarageYN: No

FireplaceYN: No

Cooling: Central Air

ExteriorFeatures: Sliding Doors, Tennis Court(s)

Features: Ceiling Fans(s), Living Room/Dining Room Combo, Thermostat, Walk-In Closet(s)

Building Details

NewConstructionYN: No

Exterior material: Block, Stucco

Heating: Electric

Roof: Shingle



Call us now

Phone: 727-888-3292

Email: RealtorCandis@gmail.com



Charles Rutenberg Realty, Inc.
THE STANDARD OF EXCELLENCE

Miscellaneous

Ownership: Condominium

Occupant Type: Vacant

Showing Requirements: ShowingTime



Call us now

Phone: 727-888-3292

Email: RealtorCandis@gmail.com



Charles Rutenberg Realty, Inc.
THE STANDARD OF EXCELLENCE