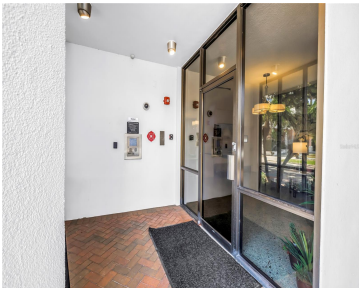


700 BEACH DRIVE ST PETERSBURG FL 33701

https://candiscarmichael.com



WELCOME to 700 BEACH DR UNIT 602 - Harbour Hill Condominiums. You will fall in love with this beautiful updated 2 bedroom/2bath (1365 sq ft) condo with gorgeous views of Tampa Bay, Vinoy Park and downtown St Petersburg. The Harbour Hill Community is close to everything downtown St Petersburg provides and is, also, nestled amongst [...]

- 2 beds
- 2 baths
- Residential
- Condominium
- Active
- 1365 sq ft



Courtesy of

Listing Office: COMPASS FLORIDA LLC

Status: Active

Office ID: MFR260033445

MLS ID: MFRTB8396545



Call us now

Phone: 727-888-3292
Email: RealtorCandis@gmail.com



Description

Virtual Tour: <https://www.propertypanorama.com/instaview/stellar/TB8396545>

Basics

Unit Number: 602

Date added: Added 5 months ago

Type: Residential

Bathrooms: 2 baths

Floors: 9 floors

Lot size, sq ft: 28143 sq ft

UnitNumber: 602

ListOfficeName: COMPASS FLORIDA LLC

ListAOR: mfrmls

Bathrooms Full: 2

Category: Condominium

Bedrooms: 2 beds

Half baths: 0 half baths

Area, sq ft: 1365 sq ft

Year built: 1971

SubdivisionName: HARBOUR HILL CONDO

GarageSpaces: 1

Location Details

Township: 31

Road Surface Type: Asphalt

Property Features



Call us now

Phone: 727-888-3292

Email: RealtorCandis@gmail.com



Charles Rutenberg Realty, Inc.
THE STANDARD OF EXCELLENCE

Interior Features: Ceiling Fans(s), Eat-in Kitchen, Solid Wood Cabinets, Split Bedroom, Stone Counters, Walk-In Closet(s), Window Treatments

Flooring: Tile, Wood

Parking Features: Assigned, Garage Door Opener

Attached Garage YN: Yes

Pets Allowed: No

Roof: Membrane

Water Source: None

Cooling: Central Air

Appliances: Dishwasher, Electric Water Heater, Microwave, Range, Range Hood, Refrigerator, Water Filtration System

Laundry Features: Laundry Room, Same Floor As Condo Unit

Garage YN: Yes

Garage Spaces: 1

Exterior Features: Balcony, Sliding Doors, Storage

Utilities: Cable Connected, Electricity Connected, Sewer Connected

Sewer: Public Sewer

Heating: Central, Electric

Property Details

Subdivision Name: HARBOUR HILL CONDO

Levels: One

Foundation Details: Concrete Perimeter, Slab

Parcel Number: 18-31-17-36698-000-6020

Direction Faces: Southeast

Construction Materials: Block

Association Information

Association YN: Yes

Association Fee Frequency: Monthly

Association Fee Includes: Cable TV, Insurance, Internet, Maintenance Structure, Maintenance Grounds, Management, Sewer, Trash, Water

Community Features: None

Fees&Taxes



Call us now

Phone: 727-888-3292

Email: RealtorCandis@gmail.com



Charles Rutenberg Realty, Inc.
THE STANDARD OF EXCELLENCE

Rooms

Room type	Dimensions	Level	Length	Width
Primary Bedroom	15x16	First	16	15
Bedroom 2	12x16	First	16	12
Kitchen	10x12	First	12	10
Great Room	29x14	First	14	29

Amenities & Features

- Waterfront available:** No

AttachedGarageYN: Yes

PoolPrivateYN: No

CommunityFeatures: None

Utilities: Cable Connected, Electricity Connected, Sewer Connected

Amenities: Dishwasher, Electric Water Heater, Microwave, Range, Range Hood, Refrigerator, Water Filtration System
- GarageYN:** Yes

FireplaceYN: No

Cooling: Central Air

ExteriorFeatures: Balcony, Sliding Doors, Storage

Features: Ceiling Fans(s), Eat-in Kitchen, Solid Wood Cabinets, Split Bedroom, Stone Counters, Walk-In Closet(s), Window Treatments

Building Details

NewConstructionYN: No

Exterior material: Block

Parking: Assigned, Garage Door Opener

Heating: Central, Electric

Roof: Membrane

Miscellaneous

Ownership: Condominium

Showing Requirements: Call Listing Agent

Occupant Type: Vacant



Call us now

Phone: 727-888-3292

Email: RealtorCandis@gmail.com



Charles Rutenberg Realty, Inc.
THE STANDARD OF EXCELLENCE