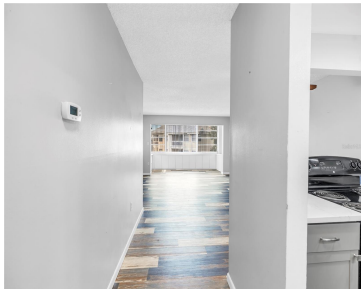


6960 20TH AVENUE ST PETERSBURG FL 33710

https://candiscarmichael.com



\$165,000

Move right in! All ages welcome! 2 beds and 2 full baths with a split bedroom plan. 2nd bedroom built in Murphy bed included. Updated kitchen with quartz counters. Open floor plan. Newer luxury vinyl floors. Large open living room and sun room with lots of natural light. Laundry and additional storage space located on [...]

- 2 beds
- 2 baths
- Residential
- Condominium
- Active
- 1050 sq ft



Courtesy of

Listing Office: RE/MAX ACTION FIRST OF FLORIDA
Status: Active

Office ID: MFR260031587
MLS ID: MFRTB8438690



Call us now

Phone: 727-888-3292
Email: RealtorCandis@gmail.com



Description

Virtual Tour: <https://www.propertypanorama.com/instaview/stellar/TB8438690>

Basics

Unit Number: 307

Date added: Added 1 month ago

Type: Residential

Bathrooms: 2 baths

Floors: 5 floors

Lot size, sq ft: 51751 sq ft

UnitNumber: 307

ListOfficeName: RE/MAX ACTION FIRST OF FLORIDA

Bathrooms Full: 2

Category: Condominium

Bedrooms: 2 beds

Half baths: 0 half baths

Area, sq ft: 1050 sq ft

Year built: 1972

SubdivisionName: CROSSWINDS COLONY ONE CONDO

ListAOR: mfrmls

Location Details

Township: 31

Road Surface Type: Paved

Elementary School: Azalea Elementary-PN **Middle Or Junior School:** Azalea Middle-PN

High School: Boca Ciega High-PN

Property Features



Call us now

Phone: 727-888-3292

Email: RealtorCandis@gmail.com



Charles Rutenberg Realty, Inc.
THE STANDARD OF EXCELLENCE

Interior Features: Ceiling Fans(s), Living Room/Dining Room Combo, Split Bedroom, Stone Counters

Flooring: Carpet, Ceramic Tile, Luxury Vinyl

Pets Allowed: Cats OK

Roof: Membrane, Shingle

Water Source: Public

Cooling: Central Air

Furnished: Negotiable

Appliances: Electric Water Heater, Range, Refrigerator

Laundry Features: Corridor Access, Laundry Room, Same Floor As Condo Unit

Exterior Features: Sidewalk

Utilities: Cable Connected, Electricity Connected, Public, Sewer Connected, Water Connected

Sewer: Public Sewer

Heating: Central

Lot Features: City Limits, Near Public Transit, Paved

Property Details

Subdivision Name: CROSSWINDS COLONY ONE CONDO

Levels: One

Foundation Details: Block

Listing Terms: Cash, Conventional

Parcel Number: 18-31-16-19743-000-3070

Direction Faces: West

Construction Materials: Stucco, Frame

Association Information

Association YN: Yes

Association Fee Frequency: Monthly

Association Amenities: Clubhouse, Elevator(s), Laundry, Pool, Shuffleboard Court

Association Fee: 737

Association Fee Includes: Cable TV, Common Area Taxes, Pool, Escrow Reserves Fund, Insurance, Internet, Maintenance Structure, Maintenance Grounds, Management, Sewer, Trash, Water

Community Features: Buyer Approval Required, Clubhouse, Pool

Fees&Taxes



Call us now

Phone: 727-888-3292

Email: RealtorCandis@gmail.com



Charles Rutenberg Realty, Inc.
THE STANDARD OF EXCELLENCE

Rooms

Room type	Dimensions	Level	Length	Width
Living Room	18x11	First	11	18
Primary Bedroom		First		
Kitchen		First		
Bedroom 2		First		

Amenities & Features

Waterfront available: No

AttachedGarageYN: No

PoolPrivateYN: No

CommunityFeatures: Buyer Approval Required, Clubhouse, Pool

Utilities: Cable Connected, Electricity Connected, Public, Sewer Connected, Water Connected

Amenities: Electric Water Heater, Range, Refrigerator

GarageYN: No

FireplaceYN: No

Cooling: Central Air

ExteriorFeatures: Sidewalk

Features: Ceiling Fans(s), Living Room/Dining Room Combo, Split Bedroom, Stone Counters

Building Details

NewConstructionYN: No

Exterior material: Frame, Stucco

Heating: Central

Roof: Membrane, Shingle

Miscellaneous

Ownership: Condominium

Occupant Type: Vacant

Showing Requirements: Supra Lock Box, ShowingTime



Call us now

Phone: 727-888-3292

Email: RealtorCandis@gmail.com



Charles Rutenberg Realty, Inc.
THE STANDARD OF EXCELLENCE