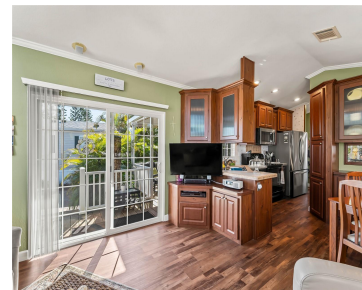


6800 GOLF COURSE BOULEVARD PUNTA GORDA FL 33982

<https://candiscarmichael.com>



\$189,000



Fresh New Price - Exceptional Opportunity! Welcome to Waters Edge RV Resort, a sought-after, resident-owned 55+ lakefront community in Punta Gorda. This beautifully maintained 2013 Chariot Eagle park model offers 1 bedroom and 1 bathroom, ideally situated on a rare oversized private lot, a true standout within the community. The expansive covered deck creates an [...]

- 1 bed
- 1 bath
- Residential
- Manufactured Home
- Active
- 504 sq ft



Courtesy of

Listing Office: LPT REALTY, LLC

Status: Active

Office ID: MFR261016803

MLS ID: MFRC7521494



Call us now

Phone: 727-888-3292

Email: RealtorCandis@gmail.com



Charles Rutenberg Realty, Inc.
THE STANDARD OF EXCELLENCE

Description

Virtual Tour: <https://www.propertypanorama.com/instaview/stellar/C7521494>

Basics

Unit Number: P12

Date added: Added 4 hours ago

Type: Residential

Bathrooms: 1 bath

Area, sq ft: 504 sq ft

Year built: 2013

SubdivisionName: WATERS EDGE COOPERATIVE

ListAOR: mfrmls

Bathrooms Full: 1

Category: Manufactured Home

Bedrooms: 1 bed

Half baths: 0 half baths

Lot size, sq ft: 4196 sq ft

UnitNumber: P12

ListOfficeName: LPT REALTY, LLC

Location Details

Township: 41S

Road Surface Type: Asphalt, Paved

Road Responsibility: Private Maintained Road

Property Features



Call us now

Phone: 727-888-3292

Email: RealtorCandis@gmail.com



Charles Rutenberg Realty, Inc.
THE STANDARD OF EXCELLENCE

Interior Features: Ceiling Fans(s), Eat-in Kitchen, High Ceilings, Open Floorplan, Primary Bedroom Main Floor, Thermostat, Vaulted Ceiling(s), Window Treatments

Flooring: Luxury Vinyl

Patio And Porch Features: Covered, Deck, Porch

Spa YN: Yes

Pets Allowed: Yes

Roof: Shingle

Utilities: Cable Available, Electricity Connected, Public, Sewer Connected, Underground Utilities, Water Connected

Sewer: Public Sewer

Heating: Central, Heat Pump

Lot Features: Landscaped, Paved, Private

Appliances: Dishwasher, Disposal, Dryer, Electric Water Heater, Microwave, Range, Refrigerator, Washer

Laundry Features: Electric Dryer Hookup, Inside, Laundry Closet, Washer Hookup

Pool Features: Gunite, Heated, In Ground, Lighting, Outside Bath Access

Spa Features: Heated, In Ground

Exterior Features: Awning(s), Lighting, Sliding Doors

Window Features: Blinds, Storm Window(s)

Water Source: Public

Cooling: Central Air

Furnished: Partially

Property Details

Subdivision Name: WATERS EDGE COOPERATIVE

Levels: One

Foundation Details: Slab

Listing Terms: Cash

Parcel Number: 412310135912

Direction Faces: North

Construction Materials: Vinyl Siding

Association Information

Association YN: Yes

Association Fee Frequency: Monthly

Association Amenities: Cable TV, Clubhouse, Gated, Handicap Modified, Laundry, Maintenance, Pool, Spa/Hot Tub, Storage, Wheelchair Access

Association Fee: 159

Association Fee Includes: Common Area Taxes, Pool, Maintenance Grounds, Management, Private Road, Recreational Facilities, Sewer, Trash, Water

Community Features: Buyer Approval Required, Clubhouse, Dog Park, Gated Community - No Guard, Golf Carts OK, Handicap Modified, Pool, Wheelchair Access



Call us now

Phone: 727-888-3292

Email: RealtorCandis@gmail.com



Charles Rutenberg Realty, Inc.
THE STANDARD OF EXCELLENCE

Fees&Taxes

Tax Year: 2025

**Tax Annual
Amount:** \$1,523

Tax Legal Description: WEO 000 0000 0P12 WATERS EDGE
COOPERATIVE UNIT P12 RP/VIN-CF0CFL11181216792(2013) 2470/933
3350/690 3913/893

Tax Lot: P12

Rooms

Room type	Dimensions	Level	Length	Width
Living Room	15x13.5	First	13.5	15
Kitchen	10x12	First	12	10
Primary Bedroom	11.5x10	First	10	11.5
Bathroom 1	5x7	First	7	5

Amenities & Features



Call us now

Phone: 727-888-3292

Email: RealtorCandis@gmail.com



Charles Rutenberg Realty, Inc.
THE STANDARD OF EXCELLENCE

Waterfront available: No

AttachedGarageYN: No

PoolPrivateYN: No

Spa Features: Heated, In Ground

WindowFeatures: Blinds, Storm Window(s)

PoolFeatures: Gunite, Heated, In Ground, Lighting, Outside Bath Access

Features: Ceiling Fans(s), Eat-in Kitchen, High Ceilings, Open Floorplan, Primary Bedroom Main Floor, Thermostat, Vaulted Ceiling(s), Window Treatments

GarageYN: No

FireplaceYN: No

Cooling: Central Air

CommunityFeatures: Buyer Approval Required, Clubhouse, Dog Park, Gated Community - No Guard, Golf Carts OK, Handicap Modified, Pool, Wheelchair Access

ExteriorFeatures: Awning(s), Lighting, Sliding Doors

Utilities: Cable Available, Electricity Connected, Public, Sewer Connected, Underground Utilities, Water Connected

Amenities: Dishwasher, Disposal, Dryer, Electric Water Heater, Microwave, Range, Refrigerator, Washer

Building Details

NewConstructionYN: No

Exterior material: Vinyl Siding

Heating: Central, Heat Pump

Roof: Shingle

Miscellaneous

Ownership: Co-op

Occupant Type: Owner

Other Structures: Shed(s), Storage

Showing Requirements: Supra Lock Box, Appointment Only, Do Not Contact Tenants, See Remarks, ShowingTime



Call us now

Phone: 727-888-3292

Email: RealtorCandis@gmail.com



Charles Rutenberg Realty, Inc.
THE STANDARD OF EXCELLENCE