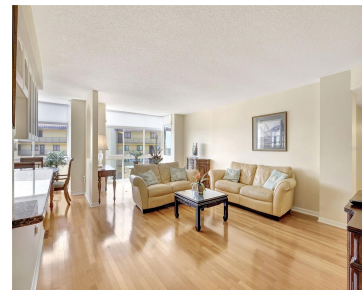


660 ISLAND WAY CLEARWATER BEACH FL 33767

<https://candiscarmichael.com>



\$359,000



****PRICE IMPROVEMENT**** Welcome to Island Estates living where you could enjoy a beautiful lifestyle in this completely updated, waterfront 2-bedroom, 2-bath condo nestled on the 7th floor of the desirable, well-maintained Building called Diamond Isle. As you enter your new home you are greeted by natural light while entertaining or relaxing in the spacious living [...]

- 2 beds
- 2 baths
- Residential
- Condominium
- Active
- 1350 sq ft



Courtesy of

Listing Office: COLDWELL BANKER REALTY

Status: Active

Office ID: MFR260000668

MLS ID: MFRTB8415708

Description



Call us now

Phone: 727-888-3292

Email: RealtorCandis@gmail.com



Charles Rutenberg Realty, Inc.
THE STANDARD OF EXCELLENCE

Virtual Tour:

https://www.zillow.com/view-3d-home/41733417-4d13-4745-a3fb-6709eaca2244?setAttribution=mls&wl=true&utm_source=dashboard

Basics

Unit Number: 708

Date added: Added 3 hours ago

Type: Residential

Bathrooms: 2 baths

Floors: 1 floor

Lot size, sq ft: 0 sq ft

UnitNumber: 708

SubdivisionName: DIAMOND ISLE CONDO

ListAOR: mfrmls

Bathrooms Full: 2

Category: Condominium

Bedrooms: 2 beds

Half baths: 0 half baths

Area, sq ft: 1350 sq ft

Year built: 1976

View: Water

ListOfficeName: COLDWELL BANKER REALTY

Location Details

Township: 29

Elementary School: Plumb Elementary-PN

High School: Clearwater High-PN

Road Surface Type: Asphalt, Paved

Middle Or Junior School: Dunedin Highland Middle-PN

Property Features



Call us now

Phone: 727-888-3292

Email: RealtorCandis@gmail.com



Charles Rutenberg Realty, Inc.
THE STANDARD OF EXCELLENCE

Interior Features: Ceiling Fans(s), Living Room/Dining Room Combo, Window Treatments

Flooring: Hardwood

Patio And Porch Features: None

Waterfront YN: Yes

Pets Allowed: Breed Restrictions, Cats OK, Dogs OK, Number Limit

Roof: Built-Up, Other

Window Features: Insulated Windows

Utilities: Cable Available, Cable Connected, Electricity Available, Electricity Connected, Public, Sewer Connected, Water Connected

View: Water

Sewer: Public Sewer

Heating: Central, Electric

Lot Features: Flood Insurance Required, FloodZone, City Limits, Near Public Transit, Sidewalk, Paved

Appliances: Dishwasher, Disposal, Electric Water Heater, Exhaust Fan, Microwave, Range, Refrigerator

Laundry Features: Inside

Pool Features: Gunite, Heated, In Ground

Waterfront Features: Gulf/Ocean, Gulf/Ocean to Bay, Intracoastal Waterway

Exterior Features: Lighting, Sidewalk

Security Features: Fire Sprinkler System, Security System

Architectural Style: Contemporary

Vegetation: Mature Landscaping

Water Source: Public

Cooling: Central Air

Furnished: Unfurnished

Accessibility Features: Accessible Elevator Installed, Accessible Hallway(s)

Property Details

Subdivision Name: DIAMOND ISLE CONDO

Levels: One

Foundation Details: Slab

Listing Terms: Cash, Conventional

Parcel Number: 05-29-15-21087-000-0708

Direction Faces: East

Construction Materials: Block, Stucco

Association Information



Call us now

Phone: 727-888-3292

Email: RealtorCandis@gmail.com



Charles Rutenberg Realty, Inc.
THE STANDARD OF EXCELLENCE

Association Fee Includes: Cable TV, Common Area Taxes, Pool, Insurance, Internet, Maintenance Structure, Maintenance Grounds, Maintenance, Management, Sewer, Trash, Water

Association Amenities: Cable TV, Elevators, Lobby Key Required, Maintenance, Pool

Community Features: Association Recreation - Owned, Buyer Approval Required, Community Mailbox, Deed Restrictions, Pool, Sidewalks, Street Lights

Fees&Taxes

Tax Year: 2024

Tax Annual Amount: \$6,985

Tax Legal Description: DIAMOND ISLE CONDO UNIT 708

Tax Lot: 0708

Green Building Info

Green Water Conservation: Irrigation-Reclaimed Water

Green Indoor Air Quality: No Smoking-Interior Buildg

Rooms

Room type	Dimensions	Level	Length	Width
Kitchen	11x9	First	9	11
Living Room	15x24	First	24	15
Primary Bedroom	11x15	First	15	11
Bedroom 2	11x13	First	13	11
Dining Room	11x11	First	11	11



Call us now

Phone: 727-888-3292

Email: RealtorCandis@gmail.com



Charles Rutenberg Realty, Inc.
THE STANDARD OF EXCELLENCE

Amenities & Features

Waterfront available: Yes

AttachedGarageYN: No

PoolPrivateYN: No

Security Features: Fire Sprinkler System, Security System

WindowFeatures: Insulated Windows

PoolFeatures: Gunite, Heated, In Ground

Features: Ceiling Fans(s), Living Room/Dining Room Combo, Window Treatments

GarageYN: No

FireplaceYN: No

Cooling: Central Air

CommunityFeatures: Association Recreation - Owned, Buyer Approval Required, Community Mailbox, Deed Restrictions, Pool, Sidewalks, Street Lights

ExteriorFeatures: Lighting, Sidewalk

Utilities: Cable Available, Cable Connected, Electricity Available, Electricity Connected, Public, Sewer Connected, Water Connected

Amenities: Dishwasher, Disposal, Electric Water Heater, Exhaust Fan, Microwave, Range, Refrigerator

Building Details

ArchitecturalStyle: Contemporary

Heating: Central, Electric

Roof: Built-up, Other

NewConstructionYN: No

Exterior material: Block, Stucco

Miscellaneous

Ownership: Condominium

Occupant Type:
Vacant

Showing Requirements: Supra Lock Box, Appointment Only, ShowingTime



Call us now

Phone: 727-888-3292

Email: RealtorCandis@gmail.com



Charles Rutenberg Realty, Inc.
THE STANDARD OF EXCELLENCE