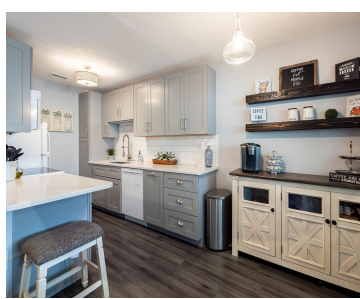
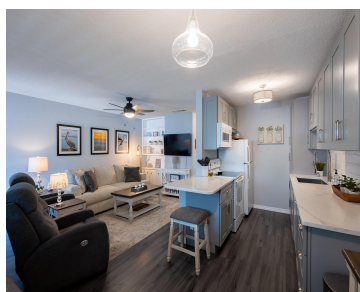
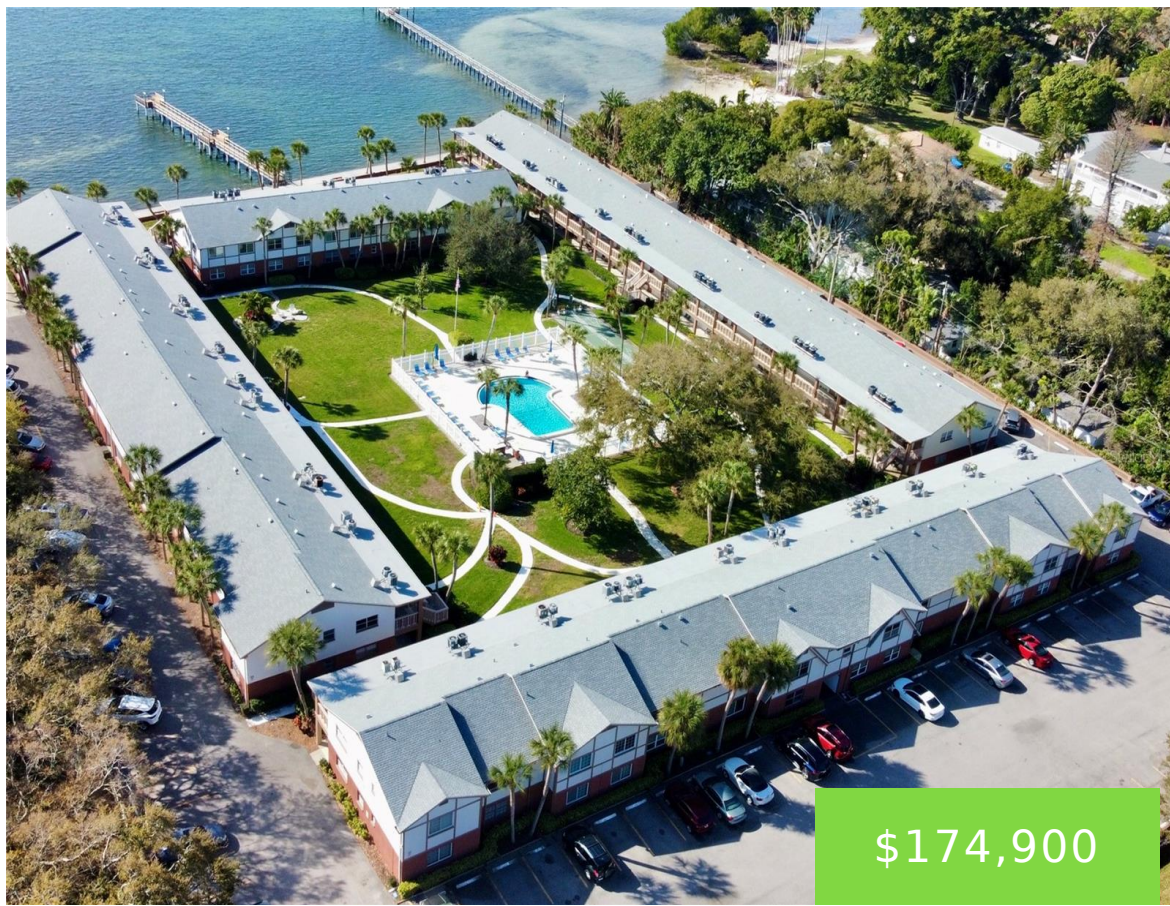


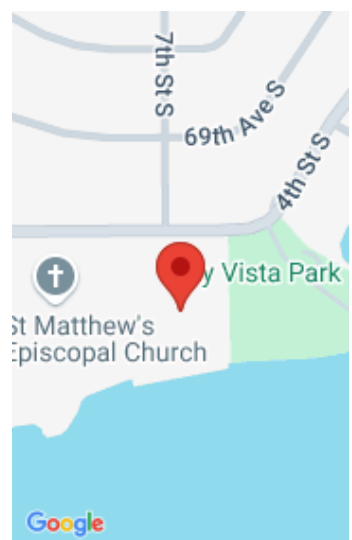
650 PINELLAS POINT DRIVE ST PETERSBURG FL 33705

<https://candiscarmichael.com>



Immaculate turnkey 1 bed / 1 bath unit in the waterfront 55+ community of Velvet Cloake with Water Views! This second floor property has been completely updated from top to bottom and is ready to move right in. Open floorplan boasts, living room, chef's kitchen with island for additional seating, as well as dining area [...]

- 1 bed
- 1 bath
- Residential
- Condominium
- Active
- 640 sq ft



Call us now

Phone: 727-888-3292

Email: RealtorCandis@gmail.com



Charles Rutenberg Realty, Inc
THE STANDARD OF EXCELLENCE

Courtesy of

Listing Office: KELLER WILLIAMS ST PETE REALTY

Status: Active

Office ID: MFR260030730

MLS ID: MFRTB8313752

Basics

Unit Number: 211

Date added: Added 2 months ago

Type: Residential

Bathrooms: 1 bath

Floors: 2 floors

Lot size, sq ft: 177244 sq ft

UnitNumber: 211

ListOfficeName: KELLER WILLIAMS ST PETE REALTY

Bathrooms Full: 1

Category: Condominium

Bedrooms: 1 bed

Half baths: 0 half baths

Area, sq ft: 640 sq ft

Year built: 1967

SubdivisionName: VELVET CLOAKE CONDO

ListAOR: mfrmls

Location Details

Township: 32

Road Surface Type: Paved

Property Features



Call us now

Phone: 727-888-3292

Email: RealtorCandis@gmail.com



Charles Rutenberg Realty, Inc.
THE STANDARD OF EXCELLENCE

Interior Features: Ceiling Fans(s), Eat-in Kitchen, Open Floorplan

Appliances: Range, Refrigerator

Flooring: Tile

Laundry Features: Common Area, Inside, Laundry Room, Upper Level

Pool Features: Gunite, In Ground

Parking Features: Assigned

Pets Allowed: No

Exterior Features: Balcony, Lighting, Sidewalk, Storage

Roof: Shingle

Utilities: Cable Available, Electricity Connected, Phone Available, Public, Sewer Connected, Water Connected

Water Source: Public

Sewer: Public Sewer

Cooling: Central Air

Heating: Central, Electric

Property Details

Subdivision Name: VELVET CLOAKE CONDO

Parcel Number: 18-32-17-93839-001-2110

Levels: One

Direction Faces: South

Foundation Details: Slab

Construction Materials: Block

Listing Terms: Cash, Conventional

Association Information

Association YN: Yes

Association Fee Frequency: Monthly

Association Fee Includes: Common Area Taxes, Pool, Escrow Reserves Fund, Insurance, Maintenance Structure, Maintenance Grounds, Management, Sewer, Trash, Water

Association Amenities: Clubhouse, Pool, Shuffleboard Court, Storage

Community Features: Buyer Approval Required, Clubhouse, Deed Restrictions, Pool, Sidewalks

Fees&Taxes

Tax Year: 2023

Tax Annual Amount: \$2,388

Tax Legal Description: VELVET CLOAKE CONDO NORTH BLDG, UNIT 211

Tax Lot: 2110



Call us now

Phone: 727-888-3292

Email: RealtorCandis@gmail.com



Charles Rutenberg Realty, Inc.
THE STANDARD OF EXCELLENCE

Rooms

| Room type | Level |
|-----------------|-------|
| Living Room | First |
| Kitchen | First |
| Primary Bedroom | First |
| Dining Room | First |

Amenities & Features

Waterfront available: No

AttachedGarageYN: No

PoolPrivateYN: No

CommunityFeatures: Buyer Approval Required, Clubhouse, Deed Restrictions, Pool, Sidewalks

PoolFeatures: Gunite, In Ground

Features: Ceiling Fans(s), Eat-in Kitchen, Open Floorplan

GarageYN: No

FireplaceYN: No

Cooling: Central Air

ExteriorFeatures: Balcony, Lighting, Sidewalk, Storage

Utilities: Cable Available, Electricity Connected, Phone Available, Public, Sewer Connected, Water Connected

Amenities: Range, Refrigerator

Building Details

NewConstructionYN: No

Exterior material: Block

Parking: Assigned

Heating: Central, Electric

Roof: Shingle



Call us now

Phone: 727-888-3292

Email: RealtorCandis@gmail.com



Charles Rutenberg Realty, Inc.
THE STANDARD OF EXCELLENCE

Miscellaneous

Ownership: Condominium **Disclosures:** HOA/PUD/Condo Disclosure, Lead Paint, Seller Property Disclosure

Occupant Type: Owner **Showing Requirements:** Appointment Only, Showing Time



Call us now

Phone: 727-888-3292

Email: RealtorCandis@gmail.com



Charles Rutenberg Realty, Inc.
THE STANDARD OF EXCELLENCE