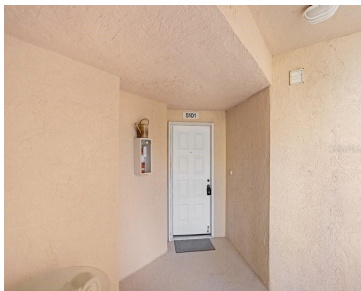


6475 SHORELINE DRIVE ST PETERSBURG FL 33708

https://candiscarmichael.com



Welcome to your next home, a spacious, well-maintained corner unit, with an oversized GARAGE, offering breathtaking views of a serene lake and the intracoastal waterway. This 3 bedroom end unit gives you the option for covered enclosed patio, as well as an exposed full length balcony with a full tranquil water view. The open-concept layout [...]

- 3 beds
- 2 baths
- Residential
- Condominium
- Active
- 1805 sq ft



Courtesy of

Listing Office: DALTON WADE INC

Status: Active

Office ID: MFR260031661

MLS ID: MFRO6360445



Call us now

Phone: 727-888-3292
Email: RealtorCandis@gmail.com



Description

Virtual Tour: <https://www.propertypanorama.com/instaview/stellar/O6360445>

Basics

Unit Number: 5101

Date added: Added 5 days ago

Type: Residential

Bathrooms: 2 baths

Floors: 4 floors

Lot size, sq ft: 0 sq ft

UnitNumber: 5101

SubdivisionName: SHORES OF LONG BAYOU CONDO

GarageSpaces: 1

Bathrooms Full: 2

Category: Condominium

Bedrooms: 3 beds

Half baths: 0 half baths

Area, sq ft: 1805 sq ft

Year built: 1999

View: Water

ListOfficeName: DALTON WADE INC

ListAOR: mfrmls

Location Details

Township: 30

Road Surface Type: Asphalt

Property Features



Call us now

Phone: 727-888-3292

Email: RealtorCandis@gmail.com



Charles Rutenberg Realty, Inc.
THE STANDARD OF EXCELLENCE

Interior Features: Ceiling Fans(s), Crown Molding

Flooring: Carpet, Ceramic Tile, Wood

Waterfront YN: Yes

Parking Features: Assigned, Covered, Ground Level, Guest

Garage Spaces: 1

Carport Spaces: 1

Exterior Features: Balcony, French Doors, Sidewalk

Utilities: Cable Connected, Electricity Connected, Water Connected

Water Source: Public

Cooling: Central Air

Appliances: Dishwasher, Disposal, Dryer, Electric Water Heater, Microwave, Range, Refrigerator, Washer

Laundry Features: Inside, Laundry Room

Waterfront Features: Bayou, Intracoastal Waterway

Garage YN: Yes

Carport YN: Yes

Pets Allowed: Cats OK, Dogs OK

Roof: Shingle

View: Water

Sewer: Public Sewer

Heating: Central

Property Details

Subdivision Name: SHORES OF LONG BAYOU CONDO

Levels: One

Foundation Details: Block

Listing Terms: Cash, Conventional, FHA

Parcel Number: 35-30-15-81836-000-5101

Direction Faces: Northwest

Construction Materials: Concrete, Frame

Association Information

Association YN: Yes

Association Fee Frequency: Monthly

Association Fee: 733

Association Fee Includes: Guard - 24 Hour, Cable TV, Pool, Escrow Reserves Fund, Insurance, Internet, Maintenance Structure, Maintenance Grounds, Maintenance, Pest Control, Security, Sewer, Trash

Community Features: Buyer Approval Required, Clubhouse, Gated Community - Guard, Pool, Sidewalks, Tennis Court(s)



Call us now

Phone: 727-888-3292

Email: RealtorCandis@gmail.com



Charles Rutenberg Realty, Inc.
THE STANDARD OF EXCELLENCE

Fees&Taxes

Tax Year: 2024

Tax Annual Amount:
\$2,413

Tax Legal Description: SHORES OF LONG BAYOU V CONDO, THE UNIT 5101 TOGETHER WITH USE OF GARAGE 4

Rooms

Room type	Dimensions	Level	Length	Width
Primary Bedroom	15x16	First	16	15
Kitchen	12x10	First	10	12
Living Room	18x14	First	14	18

Amenities & Features

Waterfront available: Yes

AttachedGarageYN: No

PoolPrivateYN: No

CommunityFeatures: Buyer Approval Required, Clubhouse, Gated Community - Guard, Pool, Sidewalks, Tennis Court(s)

Utilities: Cable Connected, Electricity Connected, Water Connected

Amenities: Dishwasher, Disposal, Dryer, Electric Water Heater, Microwave, Range, Refrigerator, Washer

GarageYN: Yes

FireplaceYN: No

Cooling: Central Air

ExteriorFeatures: Balcony, French Doors, Sidewalk

Features: Ceiling Fans(s), Crown Molding

Building Details

NewConstructionYN: No

Exterior material: Concrete, Frame

Parking: Assigned, Covered, Ground Level, Guest

Heating: Central

Roof: Shingle

Miscellaneous

Ownership: Fee Simple

Occupant Type:
Vacant

Showing Requirements: Combination Lock Box, See Remarks,
ShowingTime



Call us now

Phone: 727-888-3292

Email: RealtorCandis@gmail.com



Charles Rutenberg Realty, Inc.
THE STANDARD OF EXCELLENCE