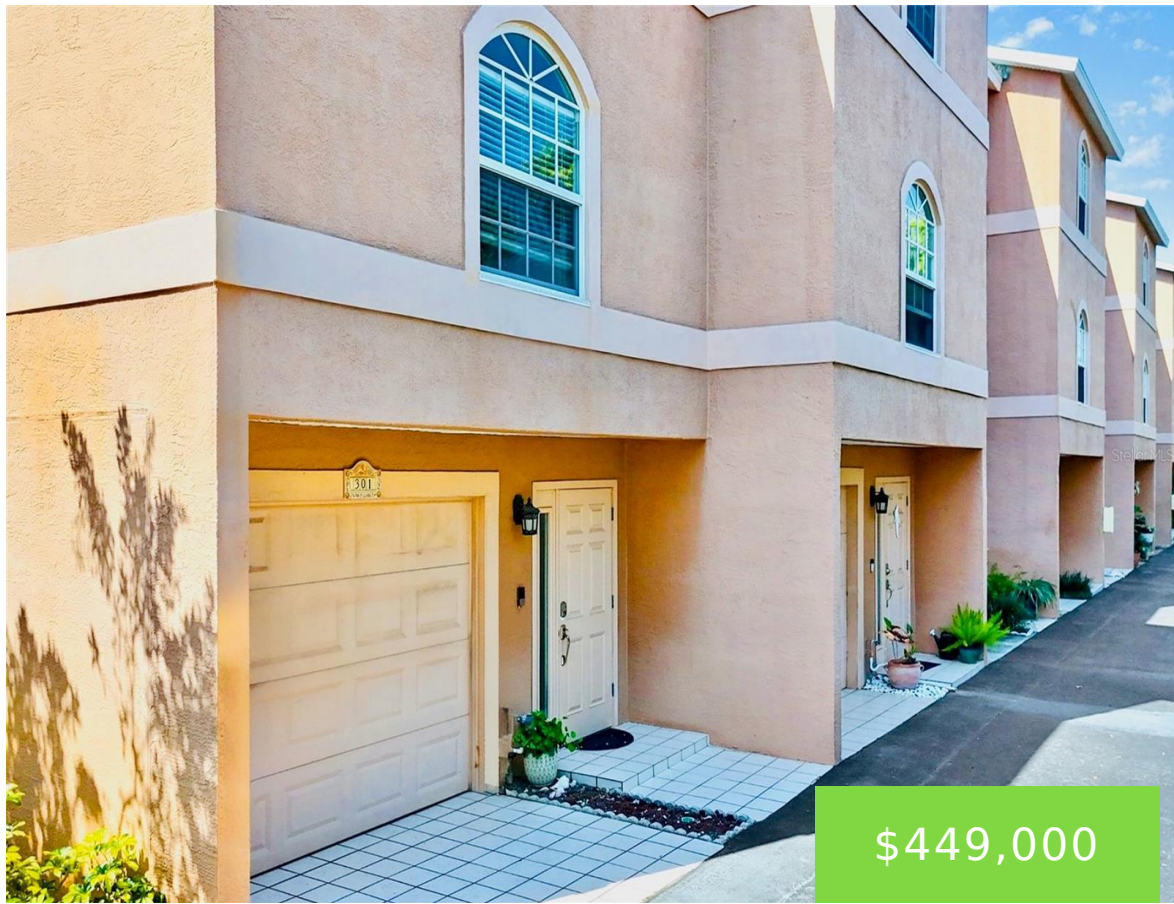
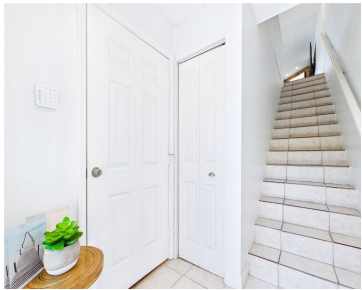


637 PINELLAS BAYWAY TIERRA VERDE FL 33715

<https://candiscarmichael.com>



\$449,000



Welcome to Palm Island in Tierra Verde—where island living meets comfort and style. This move-in ready corner 2BR/2.5BA townhome with a 2-car garage is one of the most desirable layouts in the community, offering added privacy, extra windows, and beautiful natural light throughout. Step inside to light tile flooring that leads to the main living [...]

- 2 beds
- 3 baths
- Residential
- Townhouse
- Active
- 1650 sq ft



Courtesy of

Listing Office: COASTAL PROPERTIES GROUP

Status: Active

Office ID: MFR260031369

MLS ID: MFRTB8490902



Call us now

Phone: 727-888-3292
Email: RealtorCandis@gmail.com



Description

Virtual Tour: <https://www.propertypanorama.com/instaview/stellar/TB8490902>

Basics

Unit Number: 301

Bathrooms Half: 1

Category: Townhouse

Bedrooms: 2 beds

Half baths: 1 half bath

Area, sq ft: 1650 sq ft

Year built: 1992

SubdivisionName: PALM ISLAND TWNHMS

GarageSpaces: 2

Bathrooms Full: 2

Date added: Added 4 hours ago

Type: Residential

Bathrooms: 3 baths

Floors: 3 floors

Lot size, sq ft: 1106 sq ft

UnitNumber: 301

ListOfficeName: COASTAL PROPERTIES GROUP

ListAOR: mfrmls

Location Details

Township: 32

Road Surface Type: Asphalt

Property Features



Call us now

Phone: 727-888-3292

Email: RealtorCandis@gmail.com



Charles Rutenberg Realty, Inc.
THE STANDARD OF EXCELLENCE

Interior Features: Ceiling Fans(s), Eat-in Kitchen, Kitchen/Family Room Combo, Living Room/Dining Room Combo, Open Floorplan, Primary Bedroom Upstairs, Split Bedroom

Flooring: Carpet, Tile

Fireplace YN: Yes

Parking Features: Guest, Oversized, Parking Pad, Tandem

Attached Garage YN: Yes

Pets Allowed: Size Limit

Roof: Shingle

Water Source: Public

Cooling: Central Air

Furnished: Negotiable

Appliances: Dishwasher, Disposal, Dryer, Electric Water Heater, Microwave, Range, Refrigerator, Washer

Laundry Features: Laundry Closet

Fireplace Features: Wood Burning

Garage YN: Yes

Garage Spaces: 2

Exterior Features: Balcony, Sliding Doors

Utilities: BB/HS Internet Available, Cable Available, Electricity Connected, Public, Sewer Connected, Water Connected

Sewer: Public Sewer

Heating: Central, Electric

Property Details

Subdivision Name: PALM ISLAND TWNHMS **Parcel Number:** 20-32-16-65688-000-0310

Levels: Three Or More

Foundation Details: Slab

Listing Terms: Cash, Conventional, FHA, VA Loan

Direction Faces: North

Construction Materials: Concrete, Stucco, Frame

Association Information

Association YN: Yes

Association Fee: 1140

Association Fee Frequency: Monthly

Association Fee Includes: Cable TV, Escrow Reserves Fund, Fidelity Bond, Insurance, Internet, Maintenance Structure, Maintenance Grounds, Maintenance, Management, Pool, Sewer, Trash, Water

Association Amenities: Pool

Community Features: Community Mailbox, Deed Restrictions, Pool



Call us now

Phone: 727-888-3292

Email: RealtorCandis@gmail.com



Charles Rutenberg Realty, Inc.
THE STANDARD OF EXCELLENCE

Fees&Taxes

Tax Year: 2025

Tax Legal Description: PALM ISLAND TOWNHOMES LOT 31

Tax Annual Amount: \$6,336

Tax Lot: 31

Rooms

Room type	Dimensions	Level	Length	Width
Living Room	16x17	Second	17	16
Kitchen	16x14	Second	14	16
Dining Room	16x11	Second	11	16
Primary Bedroom	13x18	Third	18	13
Bedroom 1	13x14	Third	14	13
Balcony/Porch/Lanai	17x8	Upper	8	17
Balcony/Porch/Lanai	14x8	Upper	8	14

Amenities & Features



Call us now

Phone: 727-888-3292

Email: RealtorCandis@gmail.com



Waterfront available: No

AttachedGarageYN: Yes

PoolPrivateYN: No

CommunityFeatures: Community Mailbox, Deed Restrictions, Pool

Utilities: BB/HS Internet Available, Cable Available, Electricity Connected, Public, Sewer Connected, Water Connected

Amenities: Dishwasher, Disposal, Dryer, Electric Water Heater, Microwave, Range, Refrigerator, Washer

GarageYN: Yes

FireplaceYN: Yes

Cooling: Central Air

ExteriorFeatures: Balcony, Sliding Doors

Features: Ceiling Fans(s), Eat-in Kitchen, Kitchen/Family Room Combo, Living Room/Dining Room Combo, Open Floorplan, PrimaryBedroom Upstairs, Split Bedroom, Wood Burning

Building Details

NewConstructionYN: No

Exterior material: Concrete, Frame, Stucco

Parking: Guest, Oversized, Parking Pad, Tandem

Heating: Central, Electric

Roof: Shingle

Miscellaneous

Ownership: Condominium

Showing Requirements: Supra Lock Box, ShowingTime

Occupant Type: Vacant



Call us now

Phone: 727-888-3292

Email: RealtorCandis@gmail.com



Charles Rutenberg Realty, Inc.
THE STANDARD OF EXCELLENCE