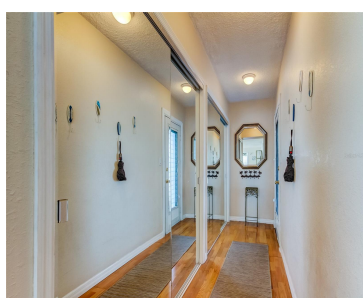


6363 GULF WINDS DRIVE ST PETE BEACH FL 33706

<https://candiscarmichael.com>

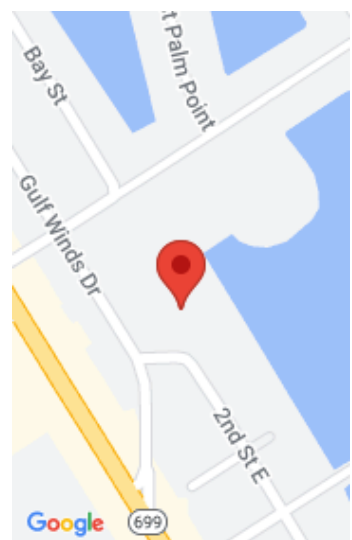


\$457,900



Introducing Sylvette - Your Gateway to Resort-Style Living at St. Pete Beach! Step into luxury living at Sylvette, where you're just moments away from the pristine sands of award-winning St. Pete Beach. This exceptional waterfront condo community offers a rare 1425 sqft corner unit with 2 bedrooms, 2 baths, fabulous water views, and is FULLY [...]

- 2 beds
- 2 baths
- Residential
- Condominium
- Active
- 1425 sq ft



Call us now

Phone: 727-888-3292

Email: RealtorCandis@gmail.com



Charles Rutenberg Realty, Inc
THE STANDARD OF EXCELLENCE

Courtesy of

Listing Office: CHARLES RUTENBERG REALTY INC

Status: Active

Office ID: MFR260000779

MLS ID: MFRU8248371

Basics

Unit Number: 237

Date added: Added 4 days ago

Type: Residential

Bathrooms: 2 baths

Floors: 4 floors

Lot size, sq ft: 0 sq ft

UnitNumber: 237

ListOfficeName: CHARLES RUTENBERG REALTY INC

Bathrooms Full: 2

Category: Condominium

Bedrooms: 2 beds

Half baths: 0 half baths

Area, sq ft: 1425 sq ft

Year built: 1966

SubdivisionName: SYLVETTE CONDO

ListAOR: mfrmls

Location Details

Township: 32

Road Surface Type: Asphalt

Elementary School: Azalea Elementary-PN **Middle Or Junior School:** Azalea Middle-PN

High School: Boca Ciega High-PN

Property Features



Call us now

Phone: 727-888-3292

Email: RealtorCandis@gmail.com



Charles Rutenberg Realty, Inc.
THE STANDARD OF EXCELLENCE

Interior Features: Ceiling Fans(s), Living Room/Dining Room Combo, Primary Bedroom Main Floor, Solid Wood Cabinets, Thermostat, Walk-In Closet(s), Window Treatments

Flooring: Marble, Wood

Pool Features: In Ground

Waterfront Features: Bay/Harbor

Carport YN: Yes

Pets Allowed: No

Roof: Other

Water Source: Public

Cooling: Central Air

Furnished: Turnkey

Appliances: Dishwasher, Disposal, Electric Water Heater, Microwave, Range, Refrigerator

Laundry Features: Common Area, Laundry Room

Waterfront YN: Yes

Parking Features: Assigned, Covered, Ground Level, Guest

Carport Spaces: 315

Exterior Features: Courtyard, Irrigation System, Outdoor Grill, Outdoor Shower

Utilities: BB/HS Internet Available, Cable Available, Electricity Available, Sewer Connected, Water Connected

Sewer: Public Sewer

Heating: Central, Electric

Property Details

Subdivision Name: SYLVETTE CONDO **Parcel Number:** 06-32-16-88905-636-2370

Levels: One

Foundation Details: Slab

Listing Terms: Cash, Conventional

Direction Faces: West

Construction Materials: Concrete, Stucco, Wood Frame

Association Information

Association YN: Yes

Association Fee Includes: Cable TV, Pool, Escrow Reserves Fund, Insurance, Internet, Maintenance Structure, Maintenance Grounds, Management, Pest Control, Recreational Facilities, Sewer, Trash, Water

Association Amenities: Cable TV, Elevator(s), Laundry, Recreation Facilities, Shuffleboard Court

Community Features: Irrigation-Reclaimed Water, Pool



Call us now

Phone: 727-888-3292

Email: RealtorCandis@gmail.com



Charles Rutenberg Realty, Inc.
THE STANDARD OF EXCELLENCE

Fees&Taxes

Tax Year: 2023

Tax Annual Amount:
\$5,090

Tax Legal Description: SYLVETTE CONDO BLDG 6363, UNIT 237
TOGETHER WITH THE USE OF CARPORT 315

Tax Lot: 00

Rooms

Room type	Dimensions	Level	Length	Width
Kitchen	14x10	First	10	14
Living Room	20x14	First	14	20
Primary Bedroom	16x14	First	14	16

Amenities & Features

Waterfront available: Yes

AttachedGarageYN: No

PoolPrivateYN: No

CommunityFeatures: Irrigation-Reclaimed Water, Pool

PoolFeatures: In Ground

Features: Ceiling Fans(s), Living Room/Dining Room Combo, Primary Bedroom Main Floor, Solid Wood Cabinets, Thermostat, Walk-In Closet(s), Window Treatments

GarageYN: No

FireplaceYN: No

Cooling: Central Air

ExteriorFeatures: Courtyard, Irrigation System, Outdoor Grill, Outdoor Shower

Utilities: BB/HS Internet Available, Cable Available, Electricity Available, Sewer Connected, Water Connected

Amenities: Dishwasher, Disposal, Electric Water Heater, Microwave, Range, Refrigerator



Call us now

Phone: 727-888-3292

Email: RealtorCandis@gmail.com



Charles Rutenberg Realty, Inc.
THE STANDARD OF EXCELLENCE

Building Details

NewConstructionYN: No

Heating: Central, Electric

Exterior material: Concrete, Stucco, Wood Frame

Roof: Other

Parking: Assigned, Covered, Ground Level, Guest

Miscellaneous

Ownership: Condominium

Disclosures: Condominium Disclosure Available, Lead Paint, Seller Property Disclosure

Occupant Type: Vacant

Showing Requirements: Appointment Only, Lock Box Electronic, ShowingTime



Call us now

Phone: 727-888-3292

Email: RealtorCandis@gmail.com



Charles Rutenberg Realty, Inc.
THE STANDARD OF EXCELLENCE