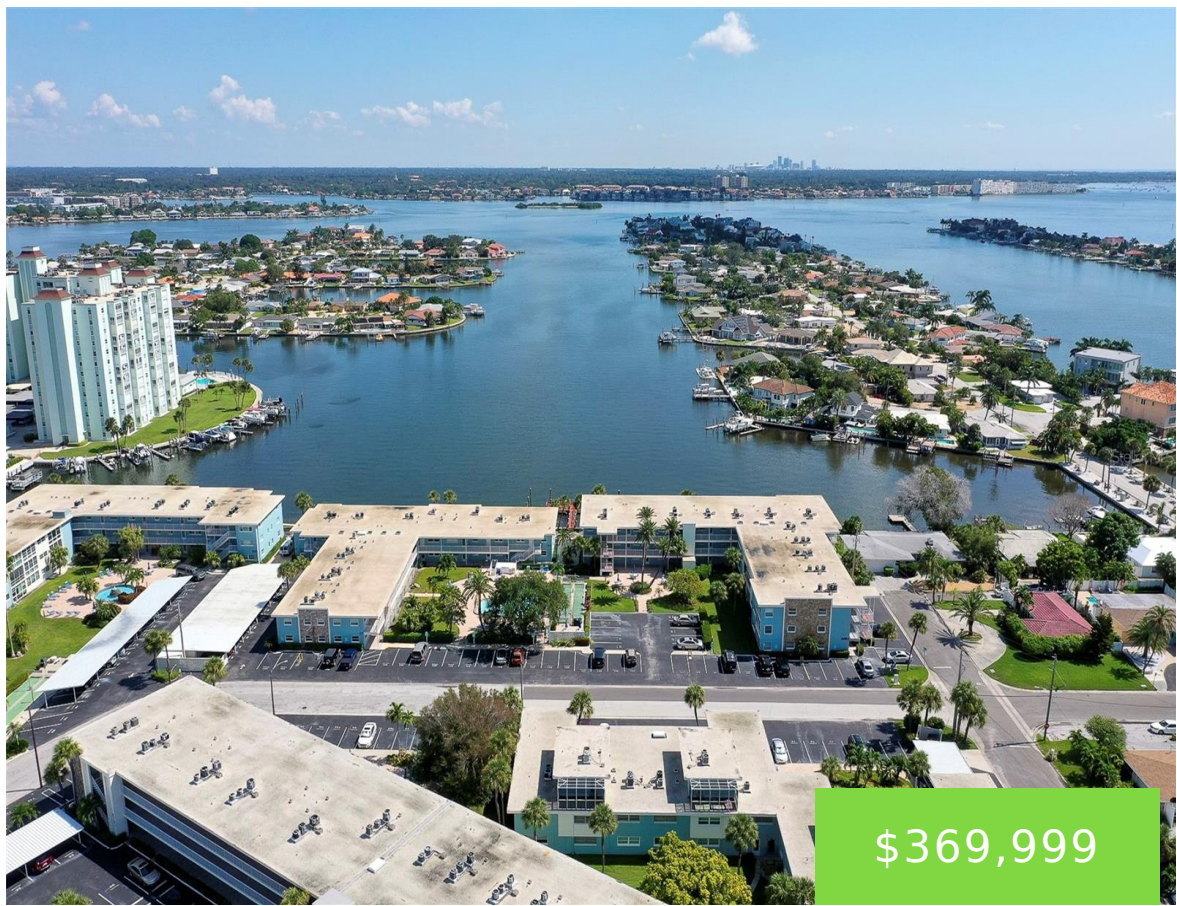
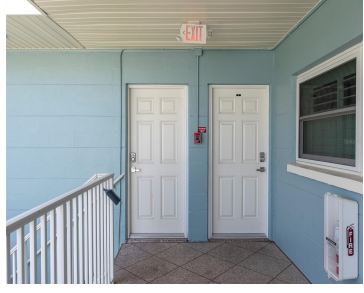


6000 2ND STREET ST PETE BEACH FL 33706

<https://candiscarmichael.com>

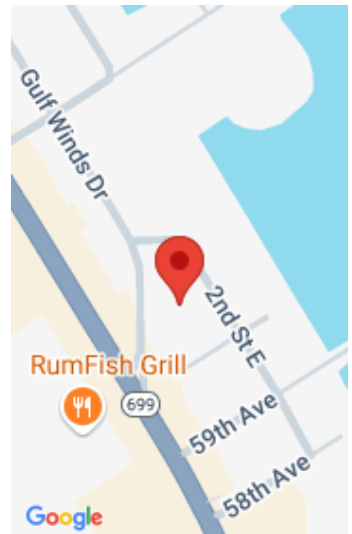


\$369,999



Beautiful 2 Bed-2 Bath condo located on St. Pete Island on Boca Ciega Bay. This is the perfect location, just a few minutes from the beach with the intracoastal on the other side. This unit is located at the end of the building so the unit has plenty of natural light. The kitchen has been [...]

- 2 beds
- 2 baths
- Residential
- Condominium
- Active
- 1040 sq ft



Call us now

Phone: 727-888-3292
Email: RealtorCandis@gmail.com



Courtesy of

Listing Office: REALTY EXPERTS

Status: Active

Office ID: MFR260031755

MLS ID: MFRTB8306302

Description

Virtual Tour: <https://www.propertypanorama.com/instaview/stellar/TB8306302>

Basics

Unit Number: 6

Date added: Added 2 months ago

Type: Residential

Bathrooms: 2 baths

Floors: 1 floor

Lot size, sq ft: 78535 sq ft

UnitNumber: 6

ListOfficeName: REALTY EXPERTS

Bathrooms Full: 2

Category: Condominium

Bedrooms: 2 beds

Half baths: 0 half baths

Area, sq ft: 1040 sq ft

Year built: 1965

SubdivisionName: SYLVETTE CONDO

ListAOR: mfrmls

Location Details

Township: 32

Road Surface Type: Paved

Property Features



Call us now

Phone: 727-888-3292

Email: RealtorCandis@gmail.com



Charles Rutenberg Realty, Inc.
THE STANDARD OF EXCELLENCE

Interior Features: Ceiling Fans(s), Eat-in Kitchen, Living Room/Dining Room Combo, Open Floorplan, Solid Surface Counters, Split Bedroom, Stone Counters, Walk-In Closet(s)

Flooring: Laminate

Pool Features: Deck, Gunite, Heated, In Ground, Lighting

Exterior Features: Lighting, Outdoor Grill, Storage

Utilities: Cable Available, Cable Connected, Electricity Connected, Public, Sewer Connected

Sewer: Public Sewer

Heating: Heat Pump

Appliances: Microwave, Range, Refrigerator

Laundry Features: Laundry Closet, Outside

Pets Allowed: No

Roof: Built-Up

Water Source: Public

Cooling: Central Air

Property Details

Subdivision Name: SYLVETTE CONDO

Levels: One

Foundation Details: Block, Slab

Listing Terms: Cash, Conventional

Parcel Number: 06-32-16-88905-600-0060

Direction Faces: East

Construction Materials: Block

Association Information

Association YN: Yes

Association Fee Frequency: Monthly

Association Fee: 631.25

Association Fee Includes: Cable TV, Common Area Taxes, Pool, Escrow Reserves Fund, Insurance, Internet, Maintenance Structure, Maintenance Grounds, Management, Pest Control, Recreational Facilities, Sewer, Trash, Water

Community Features: Association Recreation - Owned, Buyer Approval Required, Deed Restrictions, Irrigation-Reclaimed Water, Pool

Fees&Taxes



Call us now

Phone: 727-888-3292

Email: RealtorCandis@gmail.com



Charles Rutenberg Realty, Inc.
THE STANDARD OF EXCELLENCE

Tax Year: 2023

Tax Annual Amount:
\$4,274

Tax Legal Description: SYLVETTE CONDO BLDG 6000, UNIT 6
TOGETHER WITH THE USE OF CARPORT 85

Tax Lot: 060

Rooms

Room type	Dimensions	Level	Length	Width
Living Room	9x16	First	16	9
Dining Room	8x8	First	8	8
Primary Bedroom	13x6	First	6	13
Primary Bathroom	7x6	First	6	7
Kitchen	8x7	First	7	8

Amenities & Features



Call us now

Phone: 727-888-3292

Email: RealtorCandis@gmail.com



Waterfront available: No

AttachedGarageYN: No

PoolPrivateYN: No

CommunityFeatures: Association Recreation - Owned, Buyer Approval Required, Deed Restrictions, Irrigation-Reclaimed Water, Pool

PoolFeatures: Deck, Gunite, Heated, In Ground, Lighting

Features: Ceiling Fans(s), Eat-in Kitchen, Living Room/Dining Room Combo, Open Floorplan, Solid Surface Counters, Split Bedroom, Stone Counters, Walk-In Closet(s)

GarageYN: No

FireplaceYN: No

Cooling: Central Air

ExteriorFeatures: Lighting, Outdoor Grill, Storage

Utilities: Cable Available, Cable Connected, Electricity Connected, Public, Sewer Connected

Amenities: Microwave, Range, Refrigerator

Building Details

NewConstructionYN: No

Exterior material: Block

Heating: Heat Pump

Roof: Built-up

Miscellaneous

Ownership: Fee Simple **Disclosures:** Condominium Disclosure Available, Seller Property Disclosure

Occupant Type: Vacant **Showing Requirements:** Supra Lock Box, Call Listing Agent, Go Direct



Call us now

Phone: 727-888-3292

Email: RealtorCandis@gmail.com



Charles Rutenberg Realty, Inc.
THE STANDARD OF EXCELLENCE