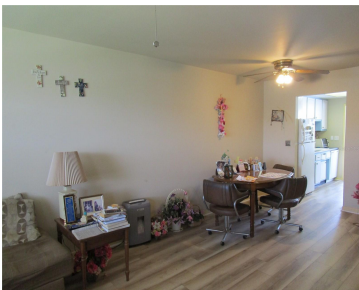


5970 21ST STREET ST PETERSBURG FL 33714

https://candiscarmichael.com



St. Pete’s Best Kept Secret! Waterfront 2BR/1Bth 2nd Floor Condominium in “D” Building. Laminate flooring in Living Room, Dining Room, Hallway, Kitchen, Bedrooms and Florida Room. Tile flooring in Bathroom. Fully applianced kitchen. HVAC does not work. Spacious Florida Room not included in square footage. Covered carport parking right out back. Front entry has beautiful [...]

- 2 beds
- 1 bath
- Residential
- Condominium
- Active
- 870 sq ft



Courtesy of

Listing Office: CHARLES RUTENBERG REALTY INC
Status: Active

Office ID: MFR260000779
MLS ID: MFRTB8398080



Call us now
Phone: 727-888-3292
Email: RealtorCandis@gmail.com



Description

Virtual Tour: <https://www.propertypanorama.com/instaview/stellar/TB8398080>

Basics

Unit Number: 15

Date added: Added 4 hours ago

Type: Residential

Bathrooms: 1 bath

Floors: 2 floors

Lot size, sq ft: 0 sq ft

UnitNumber: 15

ListOfficeName: CHARLES RUTENBERG REALTY INC

Bathrooms Full: 1

Category: Condominium

Bedrooms: 2 beds

Half baths: 0 half baths

Area, sq ft: 870 sq ft

Year built: 1965

SubdivisionName: TOWN APTS CONDO

ListAOR: mfrmls

Location Details

Township: 30

Road Responsibility: Private Maintained Road

Middle Or Junior School: Meadowlawn Middle-PN

Road Surface Type: Asphalt, Paved

Elementary School: John M Sexton Elementary-PN

High School: Northeast High-PN

Property Features



Call us now

Phone: 727-888-3292

Email: RealtorCandis@gmail.com



Charles Rutenberg Realty, Inc.
THE STANDARD OF EXCELLENCE

Interior Features: Ceiling Fans(s)

Appliances: Built-In Oven, Cooktop, Dishwasher, Microwave, Refrigerator

Flooring: Laminate, Tile

Laundry Features: Common Area

Pool Features: Heated

Parking Features: Guest

Carport YN: Yes

Carport Spaces: 1

Pets Allowed: No

Exterior Features: Awning(s), Lighting, Rain Gutters, Sidewalk

Roof: Shingle

Utilities: Cable Connected, Electricity Connected, Natural Gas Connected, Sewer Connected, Water Connected

Water Source: Public

Sewer: Public Sewer

Cooling: Central Air

Heating: Electric, Natural Gas

Furnished: Negotiable

Property Details

Subdivision Name: TOWN APTS CONDO

Parcel Number: 36-30-16-91278-004-0150

Levels: One

Direction Faces: South

Foundation Details: Slab

Construction Materials: Block

Listing Terms: Cash

Association Information

Association YN: Yes

Association Fee Frequency: Monthly

Association Fee Includes: Cable TV, Common Area Taxes, Pool, Escrow Reserves Fund, Fidelity Bond, Gas, Insurance, Internet, Maintenance Structure, Maintenance Grounds, Maintenance, Management, Private Road, Recreational Facilities, Security, Sewer, Trash, Water

Association Amenities: Shuffleboard Court

Community Features: Clubhouse, Golf Carts OK, Pool, Sidewalks, Wheelchair Access, Street Lights

Fees&Taxes



Call us now

Phone: 727-888-3292

Email: RealtorCandis@gmail.com



Charles Rutenberg Realty, Inc.
THE STANDARD OF EXCELLENCE

Rooms

Room type	Dimensions	Level	Length	Width
Living Room	14x14	First	14	14
Dining Room	8x10	First	10	8
Kitchen	8x8	First	8	8
Primary Bedroom	12x14	First	14	12
Bedroom 2		First		
Florida Room		First		

Amenities & Features

Waterfront available: No

AttachedGarageYN: No

PoolPrivateYN: No

CommunityFeatures: Clubhouse, Golf Carts OK, Pool, Sidewalks, Wheelchair Access, Street Lights

PoolFeatures: Heated

Features: Ceiling Fans(s)

GarageYN: No

FireplaceYN: No

Cooling: Central Air

ExteriorFeatures: Awning(s), Lighting, Rain Gutters, Sidewalk

Utilities: Cable Connected, Electricity Connected, Natural Gas Connected, Sewer Connected, Water Connected

Amenities: Built-In Oven, Cooktop, Dishwasher, Microwave, Refrigerator

Building Details

NewConstructionYN: No

Exterior material: Block

Parking: Guest

Heating: Electric, Natural Gas

Roof: Shingle

Miscellaneous

Ownership: Fee Simple

Showing Requirements: ShowingTime

Occupant Type: Owner



Call us now

Phone: 727-888-3292

Email: RealtorCandis@gmail.com



Charles Rutenberg Realty, Inc.
THE STANDARD OF EXCELLENCE