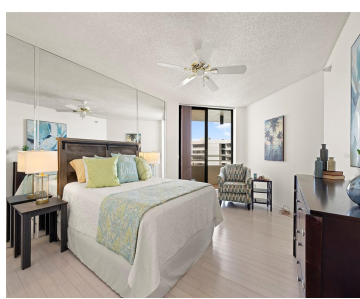


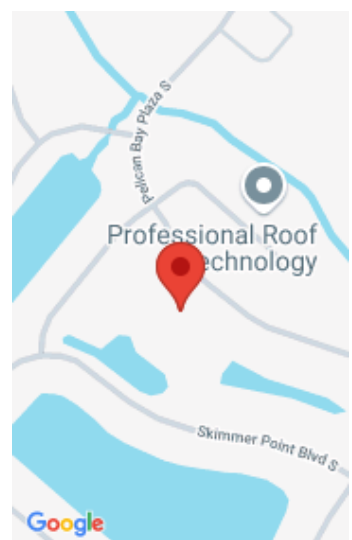
5940 PELICAN BAY PLAZA GULFPORT FL 33707

<https://candiscarmichael.com>



Lush tropical and water views await from this 12th floor condo in desirable Pasadena Yacht & Country Club. The Pasadena Yacht & Country Club is an immaculately maintained luxury gated golf community with top notch amenities. Building B is a “small pet” friendly condo that overlooks Boca Ciega Bay. The spacious 33 foot balcony which [...]

- 2 beds
- 2 baths
- Residential
- Condominium
- Active
- 1476 sq ft



Call us now

Phone: 727-888-3292

Email: RealtorCandis@gmail.com



Charles Rutenberg Realty, Inc
THE STANDARD OF EXCELLENCE

Courtesy of

Listing Office: RE/MAX METRO

Status: Active

Office ID: MFR283541001

MLS ID: MFRU8196454

Description

Virtual Tour: <https://www.propertypanorama.com/instaview/stellar/U8196454>

Basics

Unit Number: 1204

Date added: Added 2 months ago

Type: Residential

Bathrooms: 2 baths

Floors: 13 floors

Lot size, sq ft: 71199 sq ft

UnitNumber: 1204

SubdivisionName: PELICAN BAY YACHT CLUB CONDO BLDG
B

ListAOR: mfrmls

Bathrooms Full: 2

Category: Condominium

Bedrooms: 2 beds

Half baths: 0 half baths

Area, sq ft: 1476 sq ft

Year built: 1983

View: Water

ListOfficeName: RE/MAX METRO

Location Details

Township: 31

Road Surface Type: Asphalt, Paved

Property Features



Call us now

Phone: 727-888-3292

Email: RealtorCandis@gmail.com



Charles Rutenberg Realty, Inc.
THE STANDARD OF EXCELLENCE

Interior Features: Ceiling Fans(s), Eat-in Kitchen, Primary Bedroom Main Floor, Solid Surface Counters, Solid Wood Cabinets, Thermostat, Walk-In Closet(s)

Flooring: Tile, Wood

Patio And Porch Features: Rear Porch

Pool Features: Gunite, Heated, In Ground

Spa Features: Heated, In Ground

Carport YN: Yes

Pets Allowed: Size Limit

Roof: Concrete

Architectural Style: Contemporary

Vegetation: Mature Landscaping, Trees/Landscaped

Water Source: Public

Cooling: Central Air

Furnished: Unfurnished

Appliances: Dishwasher, Disposal, Dryer, Electric Water Heater, Microwave, Range, Refrigerator, Washer

Laundry Features: Inside, Laundry Closet

Pool Private YN: Yes

Spa YN: Yes

Parking Features: Assigned, Covered, Ground Level, Guest, Off Street, Under Building

Carport Spaces: 1

Exterior Features: Awning(s), Balcony, Lighting, Rain Gutters, Sidewalk, Sliding Doors, Tennis Court(s)

Window Features: Blinds

Utilities: BB/HS Internet Available, Cable Available, Electricity Connected, Public

View: Water

Sewer: Public Sewer

Heating: Central, Electric

Lot Features: City Limits, In County, Landscaped, Level, Near Golf Course, Near Marina, On Golf Course, Private, Sidewalk, Paved

Property Details

Subdivision Name: PELICAN BAY YACHT CLUB CONDO BLDG B

Levels: One

Foundation Details: Slab

Listing Terms: Cash, Conventional

Parcel Number: 32-31-16-68211-002-1204

Direction Faces: North

Construction Materials: Concrete, Stucco

Association Information



Call us now

Phone: 727-888-3292

Email: RealtorCandis@gmail.com



Charles Rutenberg Realty, Inc.
THE STANDARD OF EXCELLENCE

Association YN: Yes

Association Fee Frequency:
Monthly

Association Amenities: Cable TV, Clubhouse, Elevator(s), Fitness Center, Gated, Golf Course, Lobby Key Required, Pool, Recreation Facilities, Security, Spa/Hot Tub, Storage, Tennis Court(s)

Association Fee: 1201.8

Association Fee Includes: Guard - 24 Hour, Cable TV, Pool, Escrow Reserves Fund, Fidelity Bond, Insurance, Internet, Maintenance Structure, Maintenance Grounds, Management, Private Road, Recreational Facilities, Security, Sewer, Trash, Water

Community Features: Buyer Approval Required, Clubhouse, Deed Restrictions, Fitness Center, Golf Carts OK, Golf, Pool, Sidewalks, Special Community Restrictions, Tennis Courts

Fees&Taxes

Tax Year: 2022

Tax Annual Amount:
\$2,611

Tax Legal Description: PELICAN BAY YACHT CLUB BLDG B CONDO UNIT 1204 TOGETHER WITH THE USE OF PARKING SPACE 139 & STORAGE SPACE 1204

Tax Lot: 1204

Rooms



Call us now

Phone: 727-888-3292

Email: RealtorCandis@gmail.com



Charles Rutenberg Realty, Inc.
THE STANDARD OF EXCELLENCE

Room type	Dimensions	Level	Length	Width
Living Room	15x31	First	31	15
Dining Room	8x8	First	8	8
Kitchen	11x11	First	11	11
Bedroom 2	13x13	First	13	13
Bathroom 2	7x5	First	5	7
Primary Bedroom	19x12	First	12	19
Primary Bathroom	15x6	First	6	15
Balcony/Porch/Lanai	33x6	First	6	33

Amenities & Features



Call us now

Phone: 727-888-3292

Email: RealtorCandis@gmail.com



Waterfront available: No

AttachedGarageYN: No

PoolPrivateYN: Yes

Spa Features: Heated, In Ground

WindowFeatures: Blinds

PoolFeatures: Gunite, Heated, In Ground

Features: Ceiling Fans(s), Eat-in Kitchen, Primary Bedroom Main Floor, Solid Surface Counters, Solid Wood Cabinets, Thermostat, Walk-In Closet(s)

GarageYN: No

FireplaceYN: No

Cooling: Central Air

CommunityFeatures: Buyer Approval Required, Clubhouse, Deed Restrictions, Fitness Center, Golf Carts OK, Golf, Pool, Sidewalks, Special Community Restrictions, Tennis Courts

ExteriorFeatures: Awning(s), Balcony, Lighting, Rain Gutters, Sidewalk, Sliding Doors, Tennis Court(s)

Utilities: BB/HS Internet Available, Cable Available, Electricity Connected, Public

Amenities: Dishwasher, Disposal, Dryer, Electric Water Heater, Microwave, Range, Refrigerator, Washer

Building Details

ArchitecturalStyle: Contemporary **NewConstructionYN:** No

Heating: Central, Electric

Exterior material: Concrete, Stucco

Roof: Concrete

Parking: Assigned, Covered, Ground Level, Guest, Off-street, Under Building

Miscellaneous

Ownership: Condominium

Disclosures: Condominium Disclosure Available, Seller Property Disclosure

Occupant Type: Owner

Other Structures: Tennis Court(s)

Showing Requirements: Lock Box Electronic, ShowingTime



Call us now

Phone: 727-888-3292

Email: RealtorCandis@gmail.com



Charles Rutenberg Realty, Inc.
THE STANDARD OF EXCELLENCE