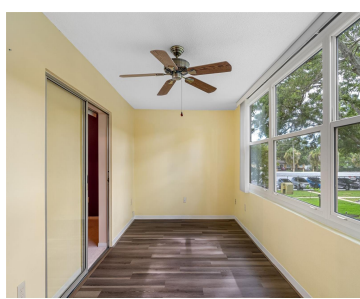


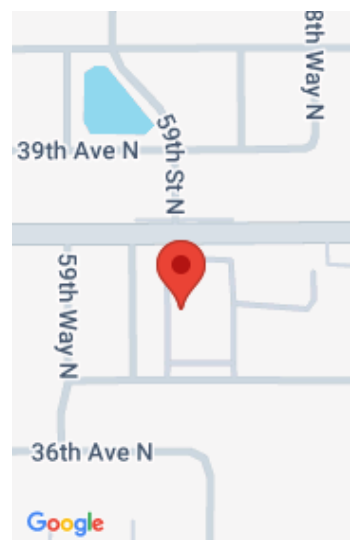
5890 38TH AVENUE SAINT PETERSBURG FL 33710

<https://candiscarmichael.com>



Parkwood Condo community, exclusively for those 55 and older, located in the heart of NW St. Petersburg, FL. This 2-bedroom, 1-bathroom condo is ideal for those seeking convenience and comfort. Step into a home featuring new luxury plank vinyl flooring in the sunroom and kitchen, along with a double vanity in the bathroom. The spacious [...]

- 2 beds
- 1 bath
- Residential
- Condominium
- Active
- 960 sq ft



Call us now

Phone: 727-888-3292
Email: RealtorCandis@gmail.com



Courtesy of

Listing Office: PREMIER SOTHEBY'S INTL REALTY

Status: Active

Office ID: MFR260033547

MLS ID: MFRU8248510

Description

Virtual Tour: <https://arnold-novak-photography.aryeo.com/sites/mngwgvn/unbranded>

Basics

Unit Number: 204

Date added: Added 3 weeks ago

Type: Residential

Bathrooms: 1 bath

Floors: 3 floors

Lot size, sq ft: 59321 sq ft

UnitNumber: 204

ListOfficeName: PREMIER SOTHEBY'S INTL REALTY

Bathrooms Full: 1

Category: Condominium

Bedrooms: 2 beds

Half baths: 0 half baths

Area, sq ft: 960 sq ft

Year built: 1971

SubdivisionName: PARKWOOD CONDO

ListAOR: mfrmls

Location Details

Township: 31

Road Surface Type: Concrete

Elementary School: Westgate Elementary-PN **Middle Or Junior School:** Tyrone Middle-PN

High School: Dixie Hollins High-PN

Property Features



Call us now

Phone: 727-888-3292

Email: RealtorCandis@gmail.com



Charles Rutenberg Realty, Inc.
THE STANDARD OF EXCELLENCE

Interior Features: Living Room/Dining Room Combo

Flooring: Carpet, Luxury Vinyl

Pets Allowed: Yes

Roof: Membrane, Other

Water Source: Public

Cooling: Central Air

Appliances: Microwave, Range, Refrigerator

Laundry Features: Common Area, Electric Dryer Hookup, Washer Hookup

Exterior Features: Sidewalk, Storage

Utilities: Cable Connected, Electricity Connected, Sewer Connected, Water Connected

Sewer: Public Sewer

Heating: Central

Property Details

Subdivision Name: PARKWOOD CONDO

Levels: One

Foundation Details: Slab

Listing Terms: Cash, Conventional

Parcel Number: 08-31-16-66862-000-2040

Direction Faces: West

Construction Materials: Concrete

Association Information

Association YN: Yes

Association Fee Frequency: Monthly

Community Features: Buyer Approval Required, Sidewalks

Association Fee: 608

Association Fee Includes: Cable TV, Common Area Taxes, Escrow Reserves Fund, Internet, Maintenance Structure, Maintenance Grounds, Sewer, Trash, Water

Fees&Taxes

Tax Year: 2023 **Tax Legal Description:** PARKWOOD SQUARE APTS BLDG A CONDO APT 204 TOGETHER WITH THE USE OF PARKING SPACES 204A & 204A

Tax Lot: 2020



Call us now

Phone: 727-888-3292

Email: RealtorCandis@gmail.com



Charles Rutenberg Realty, Inc.
THE STANDARD OF EXCELLENCE

Rooms

Room type	Dimensions	Level	Length	Width
Dining Room	12x9	First	9	12
Living Room	12x18	First	18	12
Primary Bedroom	15x11	First	11	15
Kitchen	10x12	First	12	10

Amenities & Features

Waterfront available: No

AttachedGarageYN: No

PoolPrivateYN: No

CommunityFeatures: Buyer Approval Required, Sidewalks

Utilities: Cable Connected, Electricity Connected, Sewer Connected, Water Connected

Amenities: Microwave, Range, Refrigerator

GarageYN: No

FireplaceYN: No

Cooling: Central Air

ExteriorFeatures: Sidewalk, Storage

Features: Living Room/Dining Room Combo

Building Details

NewConstructionYN: No

Exterior material: Concrete

Heating: Central

Roof: Membrane, Other

Miscellaneous



Call us now

Phone: 727-888-3292

Email: RealtorCandis@gmail.com



Charles Rutenberg Realty, Inc.
THE STANDARD OF EXCELLENCE

Ownership: Condominium **Disclosures:** HOA/PUD/Condo Disclosure, Lead Paint, Seller Property Disclosure

Occupant Type: Vacant **Showing Requirements:** Appointment Only, Call Before Showing, Call Listing Agent, Lock Box Electronic



Call us now

Phone: 727-888-3292

Email: RealtorCandis@gmail.com



Charles Rutenberg Realty, Inc
THE STANDARD OF EXCELLENCE