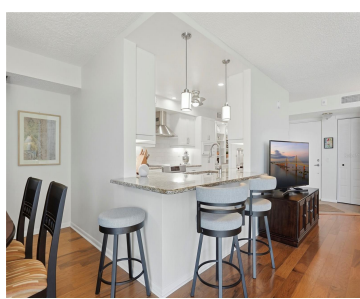
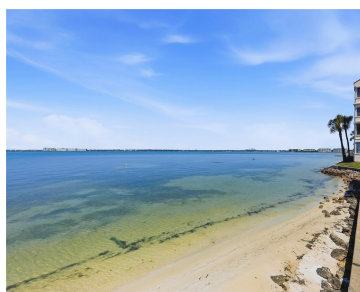


5729 PUERTA DEL SOL BOULEVARD ST PETERSBURG FL 33715

<https://candiscarmichael.com>



\$515,000



You are going to love this delightful waterfront condominium, with an airy pastel palette that pays tribute to the bay's sparkling water and soft sea breezes. Tenderly cared for, this condo features a handsome remodeled kitchen and bathrooms, new windows and sliding glass doors, and is available to you fully turnkey. The unique floor plan [...]

- 2 beds
- 2 baths
- Residential
- Condominium
- Active
- 1320 sq ft



Courtesy of

Listing Office: COMPASS FLORIDA LLC

Status: Active

Office ID: MFR260033445

MLS ID: MFRTB8499265



Call us now

Phone: 727-888-3292
Email: RealtorCandis@gmail.com



Description

Virtual Tour: <https://www.propertypanorama.com/instaview/stellar/TB8499265>

Basics

Unit Number: 181

Date added: Added 1 day ago

Type: Residential

Bathrooms: 2 baths

Floors: 1 floor

Year built: 1978

SubdivisionName: LA PUERTA DEL SOL CONDO

ListAOR: mfrmls

Bathrooms Full: 2

Category: Condominium

Bedrooms: 2 beds

Half baths: 0 half baths

Area, sq ft: 1320 sq ft

UnitNumber: 181

ListOfficeName: COMPASS FLORIDA LLC

Location Details

Township: 32

Road Surface Type: Paved

Property Features



Call us now

Phone: 727-888-3292

Email: RealtorCandis@gmail.com



Charles Rutenberg Realty, Inc.
THE STANDARD OF EXCELLENCE

Interior Features: Open Floorplan

Flooring: Tile

Pool Private YN: Yes

Spa YN: Yes

Carport Spaces: 1

Exterior Features: Lighting, Private Entrance

Utilities: Cable Connected, Electricity Connected, Phone Available, Public, Sewer Connected, Sprinkler Recycled, Water Connected

Sewer: Public Sewer

Heating: Electric

Appliances: Dishwasher, Disposal, Dryer, Electric Water Heater, Microwave, Range, Range Hood, Refrigerator, Washer

Laundry Features: Inside

Pool Features: Gunite, In Ground

Carport YN: Yes

Pets Allowed: Cats OK, Dogs OK, Size Limit, Yes

Roof: Other

Water Source: Public

Cooling: Central Air

Furnished: Furnished

Property Details

Subdivision Name: LA PUERTA DEL SOL CONDO

Levels: One

Foundation Details: Stem Wall

Listing Terms: Cash, Conventional

Parcel Number: 08-32-16-50067-013-1810

Direction Faces: East

Construction Materials: Stucco, Frame

Association Information

Association Fee Includes: Cable TV, Pool, Escrow Reserves Fund, Maintenance Structure, Maintenance Grounds, Management, Sewer, Trash, Water

Community Features: Deed Restrictions, Pool, Street Lights

Association Amenities: Cable TV, Clubhouse, Elevators, Maintenance, Pool

Fees&Taxes



Call us now

Phone: 727-888-3292

Email: RealtorCandis@gmail.com



Charles Rutenberg Realty, Inc.
THE STANDARD OF EXCELLENCE

Tax Year: 2025

Tax Annual Amount:
\$3,509

Tax Legal Description: LA PUERTA DEL SOL CONDO PHASE 13
UNIT 181 TOGETHER WITH THE USE OF PARKING SPACE 387

Tax Lot: 1810

Rooms

Room type	Dimensions	Level	Length	Width
Living Room	12x14	First	14	12
Dining Room	12x9	First	9	12
Kitchen	9x13	First	13	9
Primary Bedroom	11x16	First	16	11

Amenities & Features

Waterfront available: No

AttachedGarageYN: No

PoolPrivateYN: Yes

CommunityFeatures: Deed Restrictions, Pool, Street Lights

PoolFeatures: Gunite, In Ground

Features: Open Floorplan

GarageYN: No

FireplaceYN: No

Cooling: Central Air

ExteriorFeatures: Lighting, Private Entrance

Utilities: Cable Connected, Electricity Connected, Phone Available, Public, Sewer Connected, Sprinkler Recycled, Water Connected

Amenities: Dishwasher, Disposal, Dryer, Electric Water Heater, Microwave, Range, Range Hood, Refrigerator, Washer



Call us now

Phone: 727-888-3292

Email: RealtorCandis@gmail.com



Charles Rutenberg Realty, Inc.
THE STANDARD OF EXCELLENCE

Building Details

NewConstructionYN: No

Exterior material: Frame, Stucco

Heating: Electric

Roof: Other

Miscellaneous

Ownership: Condominium

Other Equipment: Private Entrance

Occupant Type: Owner

Showing Requirements: Call Listing Agent 2



Call us now

Phone: 727-888-3292

Email: RealtorCandis@gmail.com



Charles Rutenberg Realty, Inc.
THE STANDARD OF EXCELLENCE