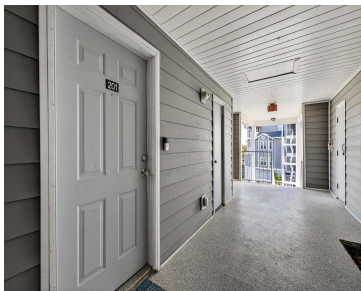


5712 BISCAYNE COURT NEW PORT RICHEY FL 34652

<https://candiscarmichael.com>



Welcome to Mariners Way, a waterfront condo community offering a true Florida lifestyle living. This fully renovated home has so many modern touches, top-floor 1-bedroom, 1-bath condominium features a bright, open-concept layout, two separate private balconies, and no neighbors above, providing added peace and privacy. The updated kitchen is the heart of the home, showcasing [...]

- 1 bed
- 1 bath
- Residential
- Condominium
- Active
- 680 sq ft



Courtesy of

Listing Office: KELLER WILLIAMS REALTY- PALM H
Status: Active

Office ID: MFR260010721
MLS ID: MFRW7881751



Call us now

Phone: 727-888-3292
Email: RealtorCandis@gmail.com



Description

Virtual Tour: <https://www.propertypanorama.com/instaview/stellar/W7881751>

Basics

Unit Number: 201

Date added: Added 4 hours ago

Type: Residential

Bathrooms: 1 bath

Floors: 3 floors

Year built: 1987

SubdivisionName: MARINERS WAY AT NEW PORT

GarageSpaces: 1

Bathrooms Full: 1

Category: Condominium

Bedrooms: 1 bed

Half baths: 0 half baths

Area, sq ft: 680 sq ft

UnitNumber: 201

ListOfficeName: KELLER WILLIAMS REALTY-PALM H

ListAOR: mfrmls

Location Details

Township: 26S

Road Surface Type: Asphalt

Property Features



Call us now

Phone: 727-888-3292

Email: RealtorCandis@gmail.com



Charles Rutenberg Realty, Inc.
THE STANDARD OF EXCELLENCE

Interior Features: Built-in Features, Ceiling Fans(s), Open Floorplan, Primary Bedroom Main Floor, Vaulted Ceiling(s), Walk-In Closet(s)

Flooring: Tile

Parking Features: Assigned, Common, Covered, Ground Level, Open, Basement

Garage Spaces: 1

Exterior Features: Balcony, Rain Gutters, Sidewalk, Sliding Doors, Storage

Security Features: Security System

Vegetation: Mature Landscaping

Sewer: Public Sewer

Heating: Central, Electric

Appliances: Dishwasher, Dryer, Electric Water Heater, Range, Range Hood, Refrigerator, Washer

Laundry Features: Inside, Laundry Closet

Garage YN: Yes

Pets Allowed: Number Limit, Size Limit, Yes

Roof: Shingle

Utilities: Cable Available, Electricity Available, Public, Sewer Connected, Water Connected

Water Source: Public

Cooling: Central Air

Furnished: Furnished

Property Details

Subdivision Name: MARINERS WAY AT NEW PORT

Parcel Number: 16-26-07-0290-00C00-2010

Levels: One

Direction Faces: North

Foundation Details: Stem Wall

Construction Materials: Block, Concrete, Vinyl Siding, Frame

Listing Terms: Cash, Conventional

Association Information

Association Fee Includes: Pool, Escrow Reserves Fund, Insurance, Maintenance Structure, Maintenance Grounds, Maintenance, Management, Pest Control, Recreational Facilities, Sewer, Trash, Water

Association Amenities: Clubhouse

Community Features: Buyer Approval Required, Clubhouse, Community Mailbox, Deed Restrictions, Pool, Racquetball, Sidewalks, Tennis Court(s)

Fees&Taxes



Call us now

Phone: 727-888-3292

Email: RealtorCandis@gmail.com



Charles Rutenberg Realty, Inc.
THE STANDARD OF EXCELLENCE

Rooms

Room type	Dimensions	Level	Length	Width
Kitchen	13x10	First	10	13
Dinette		First		
Living Room	13x15	First	15	13
Primary Bedroom	13x11	First	11	13
Primary Bathroom	9x11	First	11	9
Balcony/Porch/Lanai	8x11	First	11	8
Balcony/Porch/Lanai	7x8	First	8	7

Amenities & Features

Waterfront available: No

AttachedGarageYN: No

PoolPrivateYN: No

Security Features: Security System

ExteriorFeatures: Balcony, Rain Gutters, Sidewalk, Sliding Doors, Storage

Features: Built-in Features, Ceiling Fans(s), Open Floorplan, Primary Bedroom Main Floor, Vaulted Ceiling(s), Walk-In Closet(s)

GarageYN: Yes

FireplaceYN: No

Cooling: Central Air

CommunityFeatures: Buyer Approval Required, Clubhouse, Community Mailbox, Deed Restrictions, Pool, Racquetball, Sidewalks, Tennis Court(s)

Utilities: Cable Available, Electricity Available, Public, Sewer Connected, Water Connected

Amenities: Dishwasher, Dryer, Electric Water Heater, Range, Range Hood, Refrigerator, Washer

Building Details

NewConstructionYN: No

Exterior material: Block, Concrete, Frame, Vinyl Siding

Parking: Assigned, Basement, Common, Covered, Ground Level, Open

Heating: Central, Electric

Roof: Shingle

Miscellaneous

Ownership: Fee Simple

Showing Requirements: Supra Lock Box, Appointment Only, ShowingTime

Occupant Type: Owner



Call us now

Phone: 727-888-3292

Email: RealtorCandis@gmail.com



Charles Rutenberg Realty, Inc.
THE STANDARD OF EXCELLENCE