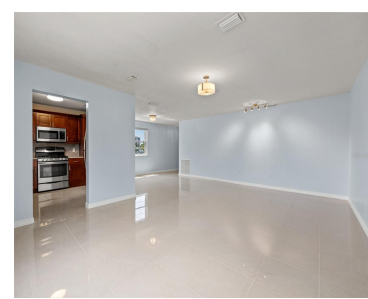


5660 80TH STREET ST PETERSBURG FL 33709

<https://candiscarmichael.com>



Welcome to the highly desirable Five Towns of St Pete! This fully renovated 2 bed/2 bath second-floor, corner unit offers the perfect blend of comfort, convenience, and resort-style living for those aged 55 and above. This unit offers two separate entrances one that leads to the inviting open floor plan, seamlessly connecting the living, dining, [...]

- 2 beds
- 2 baths
- Residential
- Condominium
- Active
- 1245 sq ft



Courtesy of

Listing Office: COMPASS FLORIDA LLC

Status: Active

Office ID: MFR260033445

MLS ID: MFRU8241727



Call us now

Phone: 727-888-3292
Email: RealtorCandis@gmail.com



Description

Virtual Tour:

https://www.zillow.com/view-3d-home/1e4929a1-2ab0-4930-adad-5c9059701f1f?utm_source=dashboard

Basics

Unit Number: A208

Date added: Added 3 hours ago

Type: Residential

Bathrooms: 2 baths

Floors: 3 floors

Lot size, sq ft: 168456 sq ft

UnitNumber: A208

ListOfficeName: COMPASS FLORIDA LLC

Bathrooms Full: 2

Category: Condominium

Bedrooms: 2 beds

Half baths: 0 half baths

Area, sq ft: 1245 sq ft

Year built: 1972

SubdivisionName: FIVE TOWNS OF ST PETE

ListAOR: mfrmls

Location Details

Township: 30

Road Surface Type: Paved

Property Features



Call us now

Phone: 727-888-3292

Email: RealtorCandis@gmail.com



Charles Rutenberg Realty, Inc.
THE STANDARD OF EXCELLENCE

Interior Features: Ceiling Fans(s), Living Room/Dining Room Combo

Flooring: Tile

Parking Features: Assigned, Covered

Carport Spaces: 1

Exterior Features: Lighting

Window Features: Storm Window(s)

Water Source: Public

Cooling: Central Air

Appliances: Dishwasher, Microwave, Range, Refrigerator

Laundry Features: Common Area, Same Floor As Condo Unit

Carport YN: Yes

Pets Allowed: Cats OK, Dogs OK, Yes

Roof: Other

Utilities: Cable Connected, Electricity Connected, Sewer Connected, Water Connected

Sewer: Public Sewer

Heating: Central

Property Details

Subdivision Name: FIVE TOWNS OF ST PETE

Levels: One

Foundation Details: Slab

Listing Terms: Cash, Conventional

Parcel Number: 36-30-15-27946-001-2080

Direction Faces: West

Construction Materials: Block

Association Information

Association YN: Yes

Association Fee Frequency: Monthly

Association Amenities: Elevator(s), Fitness Center, Laundry

Association Fee: 776.81

Association Fee Includes: Cable TV, Pool, Escrow Reserves Fund, Gas, Insurance, Internet, Maintenance Structure, Maintenance Grounds, Management, Private Road, Recreational Facilities, Sewer, Trash, Water

Community Features: Clubhouse, Fitness Center, Pool

Fees&Taxes



Call us now

Phone: 727-888-3292

Email: RealtorCandis@gmail.com



Charles Rutenberg Realty, Inc.
THE STANDARD OF EXCELLENCE

Tax Year: 2023

Tax Annual Amount: \$1,912

Tax Legal Description: FIVE TOWNS OF ST PETE NO 301
CONDO BERKSHIRE BLDG, UNIT A208

Tax Lot: 2080

Rooms

Room type	Dimensions	Level	Length	Width
Primary Bedroom	11x17	First	17	11
Bedroom 2	11x13	First	13	11
Living Room	12x15	First	15	12
Dining Room		First		
Bathroom 1		First		
Bathroom 2		First		
Kitchen		First		

Amenities & Features



Call us now

Phone: 727-888-3292

Email: RealtorCandis@gmail.com



Charles Rutenberg Realty, Inc.
THE STANDARD OF EXCELLENCE

Waterfront available: No

AttachedGarageYN: No

PoolPrivateYN: No

CommunityFeatures: Clubhouse, Fitness Center, Pool

ExteriorFeatures: Lighting

Features: Ceiling Fans(s), Living Room/Dining Room Combo

GarageYN: No

FireplaceYN: No

Cooling: Central Air

WindowFeatures: Storm Window(s)

Utilities: Cable Connected, Electricity Connected, Sewer Connected, Water Connected

Amenities: Dishwasher, Microwave, Range, Refrigerator

Building Details

NewConstructionYN: No

Exterior material: Block

Parking: Assigned, Covered

Heating: Central

Roof: Other

Miscellaneous

Ownership: Condominium

Occupant Type:
Vacant

Showing Requirements: Go Direct, Lock Box Coded, See Remarks, ShowingTime



Call us now

Phone: 727-888-3292

Email: RealtorCandis@gmail.com



Charles Rutenberg Realty, Inc.
THE STANDARD OF EXCELLENCE