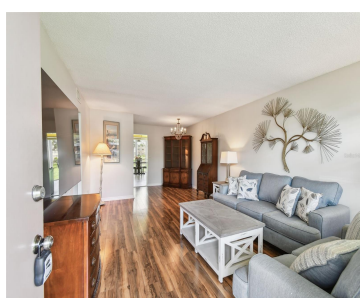


5095 BAY STREET ST PETERSBURG FL 33703

<https://candiscarmichael.com>



Discover a blend of comfort, convenience, and peace of mind in this beautifully maintained ground-floor condominium in the desirable Winston Park community. This two-bedroom, two-bath residence has never flooded or sustained hurricane damage, according to the owner, making it a rare find in Florida living. From the moment you step inside, you'll appreciate the fresh, [...]

- 2 beds
- 2 baths
- Residential
- Condominium
- Active
- 1035 sq ft



Courtesy of

Listing Office: PREMIER SOTHEBYS INTL REALTY

Status: Active

Office ID: MFR260031394

MLS ID: MFRTB8409934



Call us now

Phone: 727-888-3292
 Email: RealtorCandis@gmail.com



Description

Virtual Tour: <https://www.propertypanorama.com/instaview/stellar/TB8409934>

Basics

Unit Number: 103

Date added: Added 3 months ago

Type: Residential

Bathrooms: 2 baths

Floors: 3 floors

Year built: 1975

SubdivisionName: WINSTON PARK NORTHEAST

ListAOR: mfrmls

Bathrooms Full: 2

Category: Condominium

Bedrooms: 2 beds

Half baths: 0 half baths

Area, sq ft: 1035 sq ft

UnitNumber: 103

ListOfficeName: PREMIER SOTHEBYS INTL REALTY

Location Details

Township: 31

Road Surface Type: Paved

Property Features



Call us now

Phone: 727-888-3292

Email: RealtorCandis@gmail.com



Charles Rutenberg Realty, Inc.
THE STANDARD OF EXCELLENCE

Interior Features: Ceiling Fans(s)

Flooring: Laminate, Tile

Parking Features: Assigned, Covered, Guest

Carport Spaces: 1

Exterior Features: Courtyard, Sidewalk, Sliding Doors

Utilities: Cable Available, Electricity Connected, Public, Sewer Connected, Water Connected

Water Source: Public

Cooling: Central Air

Furnished: Unfurnished

Appliances: Dishwasher, Range, Refrigerator

Laundry Features: Other, Same Floor As Condo Unit

Carport YN: Yes

Pets Allowed: Cats OK

Roof: Other

Vegetation: Mature Landscaping, Trees/Landscaped

Sewer: Public Sewer

Heating: Central

Lot Features: FloodZone, Landscaped, Sidewalk, Paved

Property Details

Subdivision Name: WINSTON PARK NORTHEAST

Levels: One

Foundation Details: Slab

Listing Terms: Cash, Conventional, FHA, VA Loan

Parcel Number: 06-31-17-98405-600-1030

Direction Faces: North

Construction Materials: Block, Stucco

Association Information

Association YN: Yes

Association Fee Includes: Cable TV, Pool, Escrow Reserves Fund, Insurance, Internet, Maintenance Structure, Maintenance Grounds, Recreational Facilities, Sewer, Trash, Water

Community Features: Buyer Approval Required, Clubhouse, Community Mailbox, Irrigation-Reclaimed Water, Pool, Sidewalks, Wheelchair Access

Fees&Taxes



Call us now

Phone: 727-888-3292

Email: RealtorCandis@gmail.com



Charles Rutenberg Realty, Inc.
THE STANDARD OF EXCELLENCE

Tax Year: 2024

Tax Annual Amount: \$2,978

Tax Legal Description: WINSTON PARK NORTHEAST 600
CONDO APT 103

Tax Lot: 1030

Rooms

Room type	Dimensions	Level	Length	Width
Living Room	13x19	First	19	13
Kitchen	17x12	First	12	17
Primary Bedroom	16x12	First	12	16
Bedroom 2	10x10	First	10	10

Amenities & Features

Waterfront available: No

AttachedGarageYN: No

PoolPrivateYN: No

CommunityFeatures: Buyer Approval Required, Clubhouse, Community Mailbox, Irrigation-Reclaimed Water, Pool, Sidewalks, Wheelchair Access

Utilities: Cable Available, Electricity Connected, Public, Sewer Connected, Water Connected

Amenities: Dishwasher, Range, Refrigerator

GarageYN: No

FireplaceYN: No

Cooling: Central Air

ExteriorFeatures: Courtyard, Sidewalk, Sliding Doors

Features: Ceiling Fans(s)

Building Details



Call us now

Phone: 727-888-3292

Email: RealtorCandis@gmail.com



Charles Rutenberg Realty, Inc.
THE STANDARD OF EXCELLENCE

NewConstructionYN: No

Exterior material: Block, Stucco

Parking: Assigned, Covered, Guest

Heating: Central

Roof: Other

Miscellaneous

Ownership: Condominium

Occupant Type: Vacant

Showing Requirements: Lockbox, See Remarks, ShowingTime



Call us now

Phone: 727-888-3292

Email: RealtorCandis@gmail.com



Charles Rutenberg Realty, Inc.
THE STANDARD OF EXCELLENCE