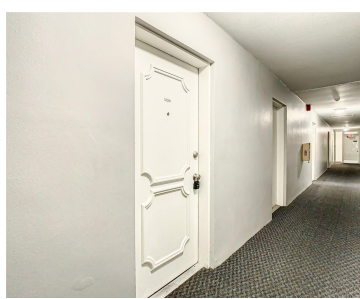


4610 GRAY STREET TAMPA FL 33609

<https://candiscarmichael.com>

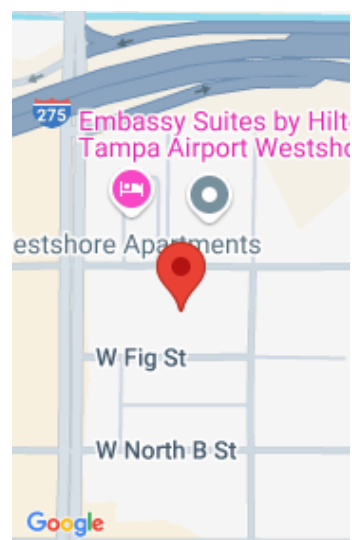


\$199,900



Attention Homebuyers! Seller Bonus Alert!!! 6 Months of HOA Dues Covered by Seller! Don't miss out on this incredible opportunity! LOCATION, LOCATION, LOCATION! This 2 Bedroom, 2 Bath condo with a split floor plan offers both charm and convenience. Upon entering, you'll be greeted by fresh paint, elegant porcelain tile, and plenty of natural light. [...]

- 2 beds
- 2 baths
- Residential
- Condominium
- Active
- 938 sq ft



Call us now

Phone: 727-888-3292
Email: RealtorCandis@gmail.com



Courtesy of

Listing Office: LPT REALTY

Status: Active

Office ID: MFR261016803

MLS ID: MFRT3486511

Description

Virtual Tour: <https://www.propertypanorama.com/instaview/stellar/T3486511>

Basics

Unit Number: 306

Date added: Added 5 hours ago

Type: Residential

Bathrooms: 2 baths

Floors: 1 floor

Lot size, sq ft: 2 sq ft

UnitNumber: 306

ListOfficeName: LPT REALTY

Bathrooms Full: 2

Category: Condominium

Bedrooms: 2 beds

Half baths: 0 half baths

Area, sq ft: 938 sq ft

Year built: 1968

SubdivisionName: SHORE COLONY CONDO

ListAOR: mfrmls

Location Details

Township: 29

Elementary School: Mitchell-HB

High School: Plant-HB

Road Surface Type: Asphalt

Middle Or Junior School: Wilson-HB

Property Features



Call us now

Phone: 727-888-3292

Email: RealtorCandis@gmail.com



Charles Rutenberg Realty, Inc.
THE STANDARD OF EXCELLENCE

Interior Features: Ceiling Fans(s), Split Bedroom, Thermostat, Walk-In Closet(s), Window Treatments

Flooring: Tile

Pool Features: In Ground

Exterior Features: Balcony, Sidewalk, Sliding Doors

Utilities: BB/HS Internet Available, Electricity Available, Electricity Connected, Public, Sewer Available, Sewer Connected, Water Available, Water Connected

Sewer: Public Sewer

Heating: Central

Appliances: Dishwasher, Disposal, Microwave, Range, Refrigerator

Laundry Features: Common Area

Pets Allowed: No

Roof: Metal, Shingle

Water Source: Public

Cooling: Central Air

Furnished: Unfurnished

Property Details

Subdivision Name: SHORE COLONY CONDO

Levels: One

Foundation Details: Slab

Listing Terms: Cash, Conventional

Parcel Number: A-20-29-18-3KW-000004-00306.0

Direction Faces: North

Construction Materials: Block, Stucco

Association Information

Association YN: Yes

Association Fee Includes: Common Area Taxes, Escrow Reserves Fund, Maintenance Structure, Maintenance Grounds, Pool, Sewer, Trash, Water

Association Fee Frequency: Monthly

Community Features: Pool, Sidewalks

Fees&Taxes

Tax Year: 2022

Tax Annual Amount: \$2,444

Tax Legal Description: SHORE COLONY CONDOMINIUM BUILDING 4 UNIT 306 TYPE 2/2 .95 PERCENTAGE OF OWNERSHIP



Call us now

Phone: 727-888-3292

Email: RealtorCandis@gmail.com



Charles Rutenberg Realty, Inc.
THE STANDARD OF EXCELLENCE

Rooms

Room type	Level
Primary Bedroom	First
Living Room	First
Kitchen	First

Amenities & Features

Waterfront available: No

AttachedGarageYN: No

PoolPrivateYN: No

CommunityFeatures: Pool, Sidewalks

PoolFeatures: In Ground

Features: Ceiling Fans(s), Split Bedroom, Thermostat, Walk-In Closet(s), Window Treatments

GarageYN: No

FireplaceYN: No

Cooling: Central Air

ExteriorFeatures: Balcony, Sidewalk, Sliding Doors

Utilities: BB/HS Internet Available, Electricity Available, Electricity Connected, Public, Sewer Available, Sewer Connected, Water Available, Water Connected

Amenities: Dishwasher, Disposal, Microwave, Range, Refrigerator

Building Details

NewConstructionYN: No

Exterior material: Block, Stucco

Heating: Central

Roof: Metal, Shingle



Call us now

Phone: 727-888-3292

Email: RealtorCandis@gmail.com



Charles Rutenberg Realty, Inc.
THE STANDARD OF EXCELLENCE

Miscellaneous

Ownership: Condominium

Occupant Type:
Vacant

Showing Requirements: Appointment Only, Gate Code Required, Lock Box Electronic, ShowingTime



Call us now

Phone: 727-888-3292

Email: RealtorCandis@gmail.com



Charles Rutenberg Realty, Inc.
THE STANDARD OF EXCELLENCE