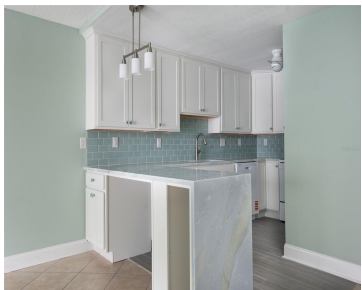


450 TREASURE ISLAND CAUSEWAY TREASURE ISLAND FL 33706

<https://candiscarmichael.com>



One or more photo(s) has been virtually staged. Enjoy the Florida lifestyle in this established waterfront community just a stroll from the sugary white sands beaches of Treasure Island. Offered within the Treasure Island Yacht and Tennis Club, this meticulously and completely renovated unit offers a bright and sunny open floorplan, with hurricane impact sliders [...]

- 1 bed
- 2 baths
- Residential
- Condominium
- Active
- 885 sq ft



Courtesy of

Listing Office: LUXURY & BEACH REALTY INC

Status: Active

Office ID: MFR260031365

MLS ID: MFRTB8492571



Call us now

Phone: 727-888-3292

Email: RealtorCandis@gmail.com



Description

Virtual Tour: <https://www.propertypanorama.com/instaview/stellar/TB8492571>

Basics

Unit Number: 105

Bathrooms Half: 1

Category: Condominium

Bedrooms: 1 bed

Half baths: 1 half bath

Area, sq ft: 885 sq ft

Year built: 1974

SubdivisionName: TREASURE ISLAND TENNIS & YACHT CLUB

ListAOR: mfrmls

Bathrooms Full: 1

Date added: Added 3 hours ago

Type: Residential

Bathrooms: 2 baths

Floors: 9 floors

Lot size, sq ft: 84039 sq ft

UnitNumber: 105

ListOfficeName: LUXURY & BEACH REALTY INC

Location Details

Township: 31

Road Surface Type: Asphalt

Property Features



Call us now

Phone: 727-888-3292

Email: RealtorCandis@gmail.com



Charles Rutenberg Realty, Inc.
THE STANDARD OF EXCELLENCE

Interior Features: Ceiling Fans(s), Eat-in Kitchen, Living Room/Dining Room Combo, Open Floorplan, Primary Bedroom Main Floor, Solid Surface Counters, Window Treatments

Flooring: Ceramic Tile

Pets Allowed: No

Roof: Shingle

Water Source: Public

Cooling: Central Air

Furnished: Unfurnished

Appliances: Cooktop, Dishwasher, Disposal, Freezer, Ice Maker, Microwave, Range, Range Hood, Refrigerator

Laundry Features: Electric Dryer Hookup, Inside, Laundry Closet, Washer Hookup

Exterior Features: Garden, Private Yard, Sliding Doors

Utilities: BB/HS Internet Available, Cable Available

Sewer: Public Sewer

Heating: Central

Property Details

Subdivision Name: TREASURE ISLAND TENNIS & YACHT CLUB

Levels: One

Foundation Details: Slab

Listing Terms: Cash, Conventional

Parcel Number: 24-31-15-91953-000-1050

Direction Faces: North

Construction Materials: Block

Association Information

Association YN: Yes

Association Fee Includes: Insurance, Maintenance Structure, Maintenance Grounds, Maintenance, Trash

Association Fee Frequency: Monthly

Community Features: Buyer Approval Required, Community Mailbox

Fees&Taxes



Call us now

Phone: 727-888-3292

Email: RealtorCandis@gmail.com



Charles Rutenberg Realty, Inc.
THE STANDARD OF EXCELLENCE

Tax Year: 2025

Tax Annual Amount:
\$1,538

Tax Legal Description: TREASURE ISLAND TENNIS & YACHT CLUB
NO. 1 CONDO BLDG 1, APT 105 TOGETHER WITH THE USE OF
PARKING SPACE 52

Tax Lot: 1050

Rooms

Room type	Level
Bathroom 1	First
Living Room	First
Primary Bedroom	First
Kitchen	First

Amenities & Features

Waterfront available: No

AttachedGarageYN: No

PoolPrivateYN: No

CommunityFeatures: Buyer Approval Required,
Community Mailbox

Utilities: BB/HS Internet Available, Cable Available

Amenities: Cooktop, Dishwasher, Disposal,
Freezer, Ice Maker, Microwave, Range, Range
Hood, Refrigerator

GarageYN: No

FireplaceYN: No

Cooling: Central Air

ExteriorFeatures: Garden, Private Yard,
Sliding Doors

Features: Ceiling Fans(s), Eat-in Kitchen,
Living Room/Dining Room Combo, Open
Floorplan, Primary Bedroom Main Floor, Solid
Surface Counters, Window Treatments



Call us now

Phone: 727-888-3292

Email: RealtorCandis@gmail.com



Charles Rutenberg Realty, Inc.
THE STANDARD OF EXCELLENCE

Building Details

NewConstructionYN: No

Exterior material: Block

Heating: Central

Roof: Shingle

Miscellaneous

Ownership: Condominium

Occupant Type: Vacant

Other Equipment: Private Yard

Showing Requirements: Supra Lock Box, Call Listing Agent,
Go Direct



Call us now

Phone: 727-888-3292

Email: RealtorCandis@gmail.com



Charles Rutenberg Realty, Inc.
THE STANDARD OF EXCELLENCE