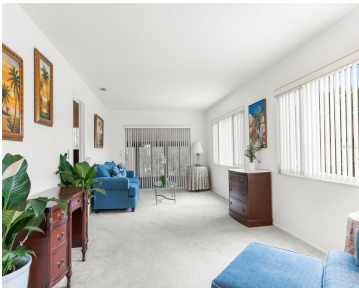


4445 PELORUS DRIVE NEW PORT RICHEY FL 34652

https://candiscarmichael.com



Welcome to Beacon Lakes - 55+ Resort-Style Living! Step into this beautifully maintained 2-bedroom, 2-bath condo located on the desirable second floor in the heart of Beacon Lakes. Offered fully furnished and move-in ready, this home combines comfort, style, and convenience. Inside, you'll find thoughtful upgrades including hurricane-impact windows, a fully window-enclosed lanai, and a [...]

- 2 beds
- 2 baths
- Residential
- Condominium
- Active
- 1144 sq ft



Courtesy of

Listing Office: LPT REALTY, LLC

Status: Active

Office ID: MFR261016803

MLS ID: MFRTB8420721



Call us now

Phone: 727-888-3292
Email: RealtorCandis@gmail.com



Basics

Bathrooms Full: 2

Category: Condominium

Bedrooms: 2 beds

Half baths: 0 half baths

Area, sq ft: 1144 sq ft

Year built: 1980

ListOfficeName: LPT REALTY, LLC

Date added: Added 3 days ago

Type: Residential

Bathrooms: 2 baths

Floors: 1 floor

Lot size, sq ft: 4787 sq ft

SubdivisionName: BEACON LAKES CONDO 05

ListAOR: mfrmls

Location Details

Township: 26S

Road Surface Type: Paved

Property Features

Interior Features: Central Vacuum, Split Bedroom

Flooring: Carpet, Ceramic Tile

Carport YN: Yes

Pets Allowed: No

Roof: Shingle

Appliances: Dishwasher, Dryer, Microwave, Range, Refrigerator, Washer

Laundry Features: In Kitchen

Carport Spaces: 1

Exterior Features: Balcony, Lighting, Sliding Doors

Utilities: Cable Available, Cable Connected, Electricity Available, Electricity Connected, Water Available, Water Connected

Water Source: Public

Sewer: Public Sewer

Cooling: Central Air

Heating: Central

Property Details



Call us now

Phone: 727-888-3292

Email: RealtorCandis@gmail.com



Charles Rutenberg Realty, Inc.
THE STANDARD OF EXCELLENCE

Subdivision Name: BEACON LAKES
CONDO 05

Parcel Number: 16-26-19-059E-26000-00D0

Levels: One

Direction Faces: Southwest

Foundation Details: Slab

Construction Materials: Block, Cement Siding, Stucco

Listing Terms: Cash, Conventional

Association Information

Association YN: Yes

Association Fee Includes: Cable TV, Common Area Taxes, Pool, Escrow Reserves Fund, Insurance, Internet, Maintenance Structure, Maintenance Grounds, Maintenance, Pest Control, Recreational Facilities, Sewer, Trash, Water

Community Features: Buyer Approval Required, Clubhouse, Fitness Center, Pool

Fees&Taxes

Tax Year: 2024

Tax Annual Amount:
\$2,173

Tax Legal Description: BEACON LAKES INC CONDO 5 PHASE E PB 18 PGS 98-100 BLDG 260 UNIT D & COMMON ELEMENTS OR 9563 PG 2697

Tax Lot: 100

Rooms



Call us now

Phone: 727-888-3292

Email: RealtorCandis@gmail.com



Charles Rutenberg Realty, Inc.
THE STANDARD OF EXCELLENCE

Room type	Dimensions	Level	Length	Width
Family Room	12x11	First	11	12
Living Room	13x11	First	11	13
Primary Bedroom	11x11	First	11	11
Kitchen	11x12	First	12	11

Amenities & Features

Waterfront available: No

AttachedGarageYN: No

PoolPrivateYN: No

CommunityFeatures: Buyer Approval Required, Clubhouse, Fitness Center, Pool

Utilities: Cable Available, Cable Connected, Electricity Available, Electricity Connected, Water Available, Water Connected

Amenities: Dishwasher, Dryer, Microwave, Range, Refrigerator, Washer

GarageYN: No

FireplaceYN: No

Cooling: Central Air

ExteriorFeatures: Balcony, Lighting, Sliding Doors

Features: Central Vaccum, Split Bedroom

Building Details

NewConstructionYN: No

Exterior material: Block, Cement Siding, Stucco

Heating: Central

Roof: Shingle

Miscellaneous



Call us now

Phone: 727-888-3292

Email: RealtorCandis@gmail.com



Charles Rutenberg Realty, Inc.
THE STANDARD OF EXCELLENCE

Ownership: Condominium

Occupant Type: Vacant

Showing Requirements: Supra Lock Box



Call us now

Phone: 727-888-3292

Email: RealtorCandis@gmail.com



Charles Rutenberg Realty, Inc.
THE STANDARD OF EXCELLENCE