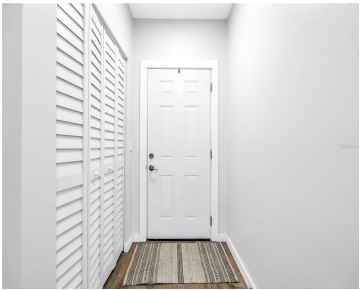
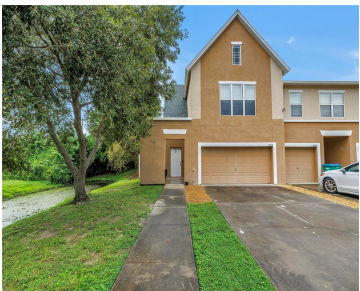


4326 TYLER CIRCLE ST PETERSBURG FL 33709

https://candiscarmichael.com



Discover the perfect blend of comfort, style, and convenience with this turnkey 3-bedroom, 2.5-bath townhome. Ready for you to move in and make it your own, this home offers a lifestyle of ease just 20 minutes from the pristine sands of St. Petersburg Beach and the lively energy of downtown. Designed for both relaxation and [...]

- 3 beds
- 3 baths
- Residential
- Townhouse
- Active
- 1685 sq ft



Courtesy of

Listing Office: COMPASS FLORIDA LLC
Status: Active

Office ID: MFR260033445
MLS ID: MFRTB8426018



Call us now
Phone: 727-888-3292
Email: RealtorCandis@gmail.com



Description

Virtual Tour: <https://www.propertypanorama.com/instaview/stellar/TB8426018>

Basics

Bathrooms Full: 2

Date added: Added 2 months ago

Type: Residential

Bathrooms: 3 baths

Floors: 2 floors

Lot size, sq ft: 4064 sq ft

SubdivisionName: LAS PALMAS TWNHMS

GarageSpaces: 2

Bathrooms Half: 1

Category: Townhouse

Bedrooms: 3 beds

Half baths: 1 half bath

Area, sq ft: 1685 sq ft

Year built: 2009

ListOfficeName: COMPASS FLORIDA LLC

ListAOR: mfrmls

Location Details

Township: 31

Road Surface Type: Asphalt

Elementary School: Seventy-Fourth St. Elem-PN **Middle Or Junior School:** Azalea Middle-PN

High School: Dixie Hollins High-PN

Property Features



Call us now

Phone: 727-888-3292

Email: RealtorCandis@gmail.com



Charles Rutenberg Realty, Inc.
THE STANDARD OF EXCELLENCE

Interior Features: Ceiling Fans(s), High Ceilings, Open Floorplan, Primary Bedroom Upstairs, Thermostat, Vaulted Ceiling(s)

Flooring: Ceramic Tile, Wood

Patio And Porch Features: Patio, Rear Porch

Garage YN: Yes

Garage Spaces: 2

Exterior Features: Rain Gutters, Sidewalk

Roof: Shingle

Water Source: Public

Cooling: Central Air

Appliances: Built-In Oven, Cooktop, Dishwasher, Freezer, Ice Maker, Range, Range Hood, Refrigerator

Laundry Features: Inside, Laundry Closet, Upper Level

Parking Features: Driveway, Guest

Attached Garage YN: Yes

Pets Allowed: Cats OK, Dogs OK, Yes

Fencing: Vinyl

Utilities: BB/HS Internet Available, Cable Available, Electricity Available, Electricity Connected, Fire Hydrant, Phone Available, Public, Sewer Connected, Water Available

Sewer: Public Sewer

Heating: Central

Property Details

Subdivision Name: LAS PALMAS TWNHMS

Levels: Two

Foundation Details: Slab

Listing Terms: Cash, Conventional, FHA, VA Loan

Parcel Number: 06-31-16-50300-005-0010

Direction Faces: South

Construction Materials: Stucco

Association Information

Association YN: Yes

Association Fee Frequency: Monthly

Association Fee: 300

Association Fee Includes: Maintenance Grounds, Management, Trash, Water

Community Features: Deed Restrictions, Gated Community - No Guard, Sidewalks, Street Lights

Fees&Taxes



Call us now

Phone: 727-888-3292

Email: RealtorCandis@gmail.com



Charles Rutenberg Realty, Inc.
THE STANDARD OF EXCELLENCE

Rooms

Room type	Dimensions	Level	Length	Width
Primary Bedroom	22x16	Second	16	22
Living Room	14x18	First	18	14
Kitchen	10x12	First	12	10

Amenities & Features

- Waterfront available:** No

AttachedGarageYN: Yes

PoolPrivateYN: No

CommunityFeatures: Deed Restrictions, Gated Community - No Guard, Sidewalks, Street Lights

Utilities: BB/HS Internet Available, Cable Available, Electricity Available, Electricity Connected, Fire Hydrant, Phone Available, Public, Sewer Connected, Water Available

Amenities: Built-In Oven, Cooktop, Dishwasher, Freezer, Ice Maker, Range, Range Hood, Refrigerator
- GarageYN:** Yes

FireplaceYN: No

Cooling: Central Air

ExteriorFeatures: Rain Gutters, Sidewalk

Features: Ceiling Fans(s), High Ceilings, Open Floorplan, PrimaryBedroom Upstairs, Thermostat, Vaulted Ceiling(s)

Building Details

NewConstructionYN: No

Exterior material: Stucco

Parking: Driveway, Guest

Heating: Central

Roof: Shingle

Miscellaneous

Ownership: Fee Simple

Occupant Type: Owner

Showing Requirements: ShowingTime



Call us now

Phone: 727-888-3292

Email: RealtorCandis@gmail.com



Charles Rutenberg Realty, Inc.
THE STANDARD OF EXCELLENCE