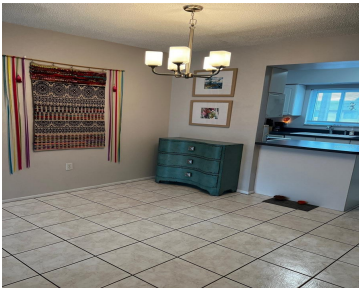


4215 EAST BAY DRIVE CLEARWATER FL 33764

https://candiscarmichael.com



Excited to share this 2 bedroom/2 bath condo in Woodside Village, situated in the Largo/Clearwater area within a few miles to the Gulf Beaches, shopping, restaurants, PIE and Tampa International Airport and under 15 minutes to St. Petersburg. These 2 baths don't come for sale as often, so grab it while you can. This is [...]

- 2 beds
- 2 baths
- Residential
- Condominium
- Active
- 870 sq ft



Call us now

Phone: 727-888-3292
Email: RealtorCandis@gmail.com



Courtesy of

Listing Office: ENGEL & VOLKERS BELLEAIR

Status: Active

Office ID: MFR260030438

MLS ID: MFRU8228987

Description

Virtual Tour: <https://www.propertypanorama.com/instaview/stellar/U8228987>

Basics

Unit Number: 1203C

Date added: Added 4 weeks ago

Type: Residential

Bathrooms: 2 baths

Floors: 1 floor

Lot size, sq ft: 863690 sq ft

UnitNumber: 1203C

Bathrooms Full: 2

Category: Condominium

Bedrooms: 2 beds

Half baths: 0 half baths

Area, sq ft: 870 sq ft

Year built: 1971

SubdivisionName: WOODSIDE VILLAGE
CONDO

ListOfficeName: ENGEL & VOLKERS BELLEAIR **ListAOR:** mfrmls

Location Details

Township: 29

Road Surface Type: Asphalt

Elementary School: Frontier Elementary-PN **Middle Or Junior School:** Fitzgerald Middle-PN

High School: Pinellas Park High-PN

Property Features



Call us now

Phone: 727-888-3292

Email: RealtorCandis@gmail.com



Charles Rutenberg Realty, Inc.
THE STANDARD OF EXCELLENCE

Interior Features: Ceiling Fans(s), Living Room/Dining Room Combo, Open Floorplan

Flooring: Ceramic Tile, Tile

Pool Private YN: Yes

Pets Allowed: No

Roof: Shingle

Utilities: Cable Available, Electricity Connected, Public, Water Connected

Sewer: Public Sewer

Heating: Central

Appliances: Dishwasher, Electric Water Heater, Exhaust Fan, Microwave, Range, Refrigerator

Laundry Features: Common Area

Pool Features: Heated, In Ground

Exterior Features: Balcony, Sidewalk, Sliding Doors

Window Features: Blinds

Water Source: None

Cooling: Central Air

Furnished: Unfurnished

Property Details

Subdivision Name: WOODSIDE VILLAGE CONDO

Levels: One

Foundation Details: Block, Slab

Listing Terms: Cash, Conventional

Parcel Number: 31-29-16-99081-003-2033

Direction Faces: South

Construction Materials: Block, Stucco

Association Information

Association YN: Yes

Association Fee: 551

Association Fee Frequency: Monthly

Association Fee Includes: Common Area Taxes, Pool, Escrow Reserves Fund, Fidelity Bond, Maintenance Structure, Maintenance Grounds, Maintenance, Management, Recreational Facilities, Sewer, Trash, Water

Association Amenities: Shuffleboard Court

Community Features: Buyer Approval Required, Pool

Fees&Taxes



Call us now

Phone: 727-888-3292

Email: RealtorCandis@gmail.com



Charles Rutenberg Realty, Inc.
THE STANDARD OF EXCELLENCE

Rooms

Room type	Dimensions	Level	Length	Width
Kitchen	10x8	First	8	10
Living Room	14x15	First	15	14
Primary Bedroom	14x11	First	11	14

Amenities & Features

- Waterfront available:** No

AttachedGarageYN: No

PoolPrivateYN: Yes

CommunityFeatures: Buyer Approval Required, Pool

ExteriorFeatures: Balcony, Sidewalk, Sliding Doors

Utilities: Cable Available, Electricity Connected, Public, Water Connected

Amenities: Dishwasher, Electric Water Heater, Exhaust Fan, Microwave, Range, Refrigerator
- GarageYN:** No

FireplaceYN: No

Cooling: Central Air

WindowFeatures: Blinds

PoolFeatures: Heated, In Ground

Features: Ceiling Fans(s), Living Room/Dining Room Combo, Open Floorplan

Building Details

NewConstructionYN: No

Exterior material: Block, Stucco

Heating: Central

Roof: Shingle

Miscellaneous

Ownership: Condominium **Disclosures:** Condominium Disclosure Available, Lead Paint, Seller Property Disclosure

Occupant Type: Vacant **Showing Requirements:** Call Listing Agent, Lock Box Electronic, ShowingTime



Call us now

Phone: 727-888-3292

Email: RealtorCandis@gmail.com



Charles Rutenberg Realty, Inc.
THE STANDARD OF EXCELLENCE