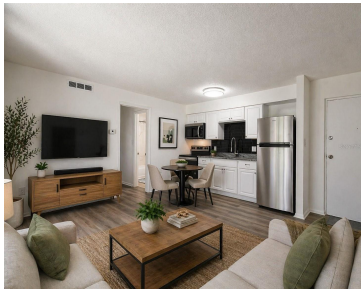


4215 BAY DRIVE CLEARWATER FL 33764

<https://candiscarmichael.com>



Completely renovated BOTTOM FLOOR and is move-in ready. Updates include a fully renovated open kitchen (2025), a completely remodeled bath with large-format tile (2025), a new air-conditioning unit (2025) and a new electrical panel (2025). The interior has been freshly painted throughout and features new luxury vinyl flooring, new kitchen cabinets, a new sink, a [...]

- 1 bed
- 1 bath
- Residential
- Condominium
- Active
- 490 sq ft



Courtesy of

Listing Office: PREMIER SOTHEBY'S INTL REALTY

Status: Active

Office ID: MFR260033547

MLS ID: MFRTB8472947



Call us now

Phone: 727-888-3292

Email: RealtorCandis@gmail.com



Description

Virtual Tour: <https://www.propertypanorama.com/instaview/stellar/TB8472947>

Basics

Unit Number: 1701B

Date added: Added 3 months ago

Type: Residential

Bathrooms: 1 bath

Floors: 1 floor

Year built: 1971

SubdivisionName: WOODSIDE VILLAGE CONDO

ListAOR: mfrmls

Bathrooms Full: 1

Category: Condominium

Bedrooms: 1 bed

Half baths: 0 half baths

Area, sq ft: 490 sq ft

UnitNumber: 1701B

ListOfficeName: PREMIER SOTHEBY'S INTL REALTY

Location Details

Township: 29

Road Surface Type: Asphalt

Elementary School: Frontier Elementary-PN

Middle Or Junior School: Fitzgerald Middle-PN

High School: Pinellas Park High-PN

Property Features



Call us now

Phone: 727-888-3292

Email: RealtorCandis@gmail.com



Charles Rutenberg Realty, Inc.
THE STANDARD OF EXCELLENCE

Interior Features: Kitchen/Family Room Combo, Open Floorplan, Primary Bedroom Main Floor, Window Treatments

Flooring: Laminate

Patio And Porch Features: Enclosed

Pets Allowed: No

Roof: Shingle

Utilities: Electricity Connected, Public, Water Connected

Sewer: Public Sewer

Heating: Central

Appliances: Cooktop, Disposal, Microwave, Refrigerator

Laundry Features: Common Area

Parking Features: Guest

Exterior Features: Outdoor Grill

Window Features: Blinds, Window Treatments

Water Source: Public

Cooling: Central Air

Furnished: Unfurnished

Property Details

Subdivision Name: WOODSIDE VILLAGE CONDO

Levels: Two

Foundation Details: Slab

Listing Terms: Cash, Conventional

Parcel Number: 31-29-16-99081-018-7012

Direction Faces: Southwest

Construction Materials: Block

Association Information

Association YN: Yes

Association Fee Frequency: Monthly

Association Amenities: Clubhouse, Laundry

Association Fee: 565

Association Fee Includes: Cable TV, Pool, Escrow Reserves Fund, Fidelity Bond, Insurance, Maintenance Structure, Maintenance Grounds, Sewer, Trash, Water

Community Features: Buyer Approval Required, Clubhouse

Fees&Taxes



Call us now

Phone: 727-888-3292

Email: RealtorCandis@gmail.com



Charles Rutenberg Realty, Inc.
THE STANDARD OF EXCELLENCE

Tax Year: 2024

**Tax Annual
Amount:** \$1,199

Tax Legal Description: WOODSIDE VILLAGE CONDO BLDG 18, UNIT 1701B TOGETHER WITH THE USE OF PARKING SPACE 1701B

Rooms

Room type	Dimensions	Level	Length	Width
Living Room	14x13	First	13	14
Kitchen	10x5	First	5	10
Primary Bedroom	10x10	First	10	10
Bathroom 1	6x4	First	4	6
Balcony/Porch/Lanai	10x5	First	5	10

Amenities & Features

Waterfront available: No

AttachedGarageYN: No

PoolPrivateYN: No

CommunityFeatures: Buyer Approval Required, Clubhouse

ExteriorFeatures: Outdoor Grill

Features: Kitchen/Family Room Combo, Open Floorplan, Primary Bedroom Main Floor, Window Treatments

GarageYN: No

FireplaceYN: No

Cooling: Central Air

WindowFeatures: Blinds, Window Treatments

Utilities: Electricity Connected, Public, Water Connected

Amenities: Cooktop, Disposal, Microwave, Refrigerator



Call us now

Phone: 727-888-3292

Email: RealtorCandis@gmail.com



Charles Rutenberg Realty, Inc.
THE STANDARD OF EXCELLENCE

Building Details

NewConstructionYN: No

Exterior material: Block

Parking: Guest

Heating: Central

Roof: Shingle

Miscellaneous

Ownership: Fee Simple

Showing Requirements: Combination Lock Box

Occupant Type: Vacant



Call us now

Phone: 727-888-3292

Email: RealtorCandis@gmail.com



Charles Rutenberg Realty, Inc.
THE STANDARD OF EXCELLENCE