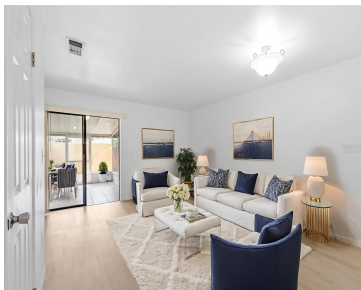


3920 CEDAR LIMB COURT TAMPA FL 33614

https://candiscarmichael.com



One or more photo(s) has been virtually staged. Updated Move-in-ready Townhome in the Heart of Tampa – Minutes from Everything You Need! This property features an open concept layout with 2-bedroom, 1.5-bathroom perfectly located near Tampa International Airport, Raymond James Stadium, International Plaza, Midtown Tampa, and George M. Steinbrenner Field; home of Yankees Spring Training! [...]

- 2 beds
- 2 baths
- Residential
- Townhouse
- Active
- 928 sq ft



Courtesy of

Listing Office: LPT REALTY, LLC
Status: Active

Office ID: MFR261016803
MLS ID: MFRTB8412163



Call us now
Phone: 727-888-3292
Email: RealtorCandis@gmail.com



Description

Virtual Tour: <https://www.propertypanorama.com/instaview/stellar/TB8412163>

Basics

Bathrooms Full: 1

Date added: Added 4 hours ago

Type: Residential

Bathrooms: 2 baths

Floors: 2 floors

Lot size, sq ft: 1070 sq ft

SubdivisionName: KIRBY CREEK

ListAOR: mfrmls

Bathrooms Half: 1

Category: Townhouse

Bedrooms: 2 beds

Half baths: 1 half bath

Area, sq ft: 928 sq ft

Year built: 1983

ListOfficeName: LPT REALTY, LLC

Location Details

Township: 28

Elementary School: Crestwood-HB

High School: Leto-HB

Road Surface Type: Paved

Middle Or Junior School: Pierce-HB

Property Features



Call us now

Phone: 727-888-3292

Email: RealtorCandis@gmail.com



Charles Rutenberg Realty, Inc.
THE STANDARD OF EXCELLENCE

Interior Features: Ceiling Fans(s), Kitchen/Family Room Combo, Open Floorplan

Flooring: Luxury Vinyl

Patio And Porch Features: Covered, Patio, Screened

Pets Allowed: Cats OK, Dogs OK

Fencing: Wood

Window Features: Blinds

Water Source: Public

Cooling: Central Air

Furnished: Unfurnished

Appliances: Dishwasher, Electric Water Heater, Microwave, Range, Refrigerator

Laundry Features: Inside, Upper Level

Parking Features: Assigned

Exterior Features: Sidewalk, Sliding Doors, Storage

Roof: Shingle

Utilities: BB/HS Internet Available, Cable Available, Cable Connected, Electricity Available, Electricity Connected

Sewer: Public Sewer

Heating: Central

Lot Features: City Limits, Near Public Transit, Sidewalk, Street Dead-End, Paved

Property Details

Subdivision Name: KIRBY CREEK

Levels: Two

Direction Faces: North

Construction Materials: Block, Frame

Parcel Number: U-28-28-18-16O-000001-00003.0

Property Attached YN: Yes

Foundation Details: Slab

Listing Terms: Cash, Conventional, FHA, VA Loan

Association Information

Association YN: Yes

Association Fee Frequency: Monthly

Association Fee: 230

Association Fee Includes: Maintenance Grounds, Sewer, Trash, Water

Community Features: Community Mailbox, Park, Sidewalks, Street Lights

Fees&Taxes



Call us now

Phone: 727-888-3292

Email: RealtorCandis@gmail.com



Charles Rutenberg Realty, Inc.
THE STANDARD OF EXCELLENCE

Rooms

Room type	Dimensions	Level	Length	Width
Primary Bedroom	12x13	Second	13	12
Bedroom 2		Second		
Kitchen		First		
Bathroom 1		First		
Bathroom 2		Second		
Living Room		First		

Amenities & Features

- Waterfront available: No

AttachedGarageYN: No

PoolPrivateYN: No

CommunityFeatures: Community Mailbox, Park, Sidewalks, Street Lights

ExteriorFeatures: Sidewalk, Sliding Doors, Storage

Features: Ceiling Fans(s), Kitchen/Family Room Combo, Open Floorplan

GarageYN: No

FireplaceYN: No

Cooling: Central Air

WindowFeatures: Blinds

Utilities: BB/HS Internet Available, Cable Available, Cable Connected, Electricity Available, Electricity Connected

Amenities: Dishwasher, Electric Water Heater, Microwave, Range, Refrigerator

Building Details

NewConstructionYN: No

Exterior material: Block, Frame

Parking: Assigned

Heating: Central

Roof: Shingle

Miscellaneous

Ownership: Fee Simple

Occupant Type: Vacant

Showing Requirements: Call Listing Agent, Combination Lock Box



Call us now

Phone: 727-888-3292

Email: RealtorCandis@gmail.com



Charles Rutenberg Realty, Inc.
THE STANDARD OF EXCELLENCE