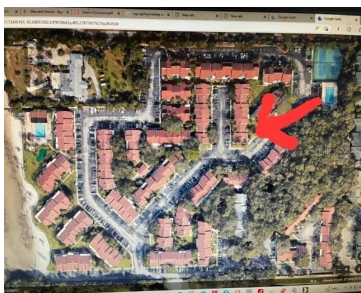


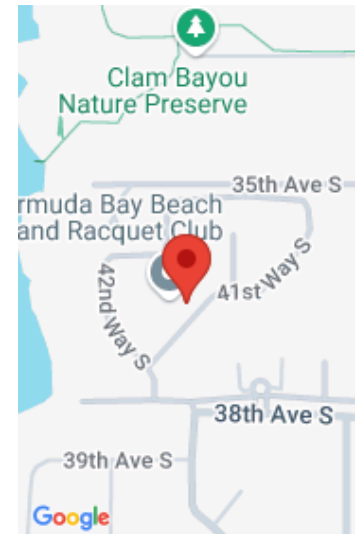
3580 41ST LANE ST PETERSBURG FL 33711

https://candiscarmichael.com



HIGH AND DRY NO WATER INTRUSION AT ALL WITH HELENA Price Reduced again \$ 10,000 more!!! Two story with two bedrooms upstairs with each having separate bathrooms. Great location in complex with one of the most sunny and bright interiors. Very clean, screened in patio. Just steps to the large, heated family pool, tennis courts [...]

- 2 beds
- 3 baths
- Residential
- Townhouse
- Active
- 1280 sq ft



Call us now

Phone: 727-888-3292
Email: RealtorCandis@gmail.com



Courtesy of

Listing Office: LUXURY & BEACH REALTY INC

Status: Active

Office ID: MFR260031365

MLS ID: MFRU8225469

Description

Virtual Tour: <https://www.propertypanorama.com/instaview/stellar/U8225469>

Basics

Unit Number: H

Bathrooms Half: 1

Category: Townhouse

Bedrooms: 2 beds

Half baths: 1 half bath

Area, sq ft: 1280 sq ft

Year built: 1974

SubdivisionName: BERMUDA BAY BEACH
CONDO

ListAOR: mfrmls

Bathrooms Full: 2

Date added: Added 2 months ago

Type: Residential

Bathrooms: 3 baths

Floors: 2 floors

Lot size, sq ft: 822188 sq ft

UnitNumber: H

ListOfficeName: LUXURY & BEACH REALTY
INC

Location Details

Township: 31

Road Surface Type: Asphalt

Property Features



Call us now

Phone: 727-888-3292

Email: RealtorCandis@gmail.com



Charles Rutenberg Realty, Inc.
THE STANDARD OF EXCELLENCE

Interior Features: Ceiling Fans(s), Split Bedroom

Flooring: Carpet

Pets Allowed: Cats OK, Dogs OK

Roof: Shingle

Water Source: Public

Cooling: Central Air

Furnished: Negotiable

Appliances: Dishwasher, Dryer, Exhaust Fan, Microwave, Range, Range Hood, Refrigerator, Washer

Laundry Features: Inside, Upper Level

Exterior Features: Irrigation System, Sidewalk, Sliding Doors, Storage, Tennis Court(s)

Utilities: Cable Connected, Electricity Connected, Sewer Connected, Water Connected

Sewer: Private Sewer

Heating: Central

Property Details

Subdivision Name: BERMUDA BAY BEACH CONDO

Levels: Two

Foundation Details: Slab

Parcel Number: 34-31-16-08320-002-0080

Direction Faces: West

Construction Materials: Stucco

Association Information

Association YN: Yes

Association Fee Frequency: Monthly

Association Fee: 1043.21

Association Fee Includes: Cable TV, Pool, Escrow Reserves Fund, Insurance, Internet, Maintenance Structure, Maintenance Grounds, Management, Pest Control, Private Road, Security, Sewer, Trash, Water

Community Features: Clubhouse, Deed Restrictions, Gated Community - Guard, Gated Community - No Guard, Irrigation-Reclaimed Water, Park, Playground, Pool, Racquetball, Sidewalks, Tennis Courts

Fees&Taxes



Call us now

Phone: 727-888-3292

Email: RealtorCandis@gmail.com



Charles Rutenberg Realty, Inc.
THE STANDARD OF EXCELLENCE

Rooms

Room type	Dimensions	Level	Length	Width
Living Room	15x10	First	10	15
Dining Room	14x10	First	10	14
Kitchen	11x8	First	8	11
Primary Bedroom	14x11	Second	11	14
Bedroom 2	12x11	Second	11	12

Amenities & Features

Waterfront available: No

AttachedGarageYN: No

PoolPrivateYN: No

CommunityFeatures: Clubhouse, Deed Restrictions, Gated Community - Guard, Gated Community - No Guard, Irrigation-Reclaimed Water, Park, Playground, Pool, Racquetball, Sidewalks, Tennis Courts

Utilities: Cable Connected, Electricity Connected, Sewer Connected, Water Connected

Amenities: Dishwasher, Dryer, Exhaust Fan, Microwave, Range, Range Hood, Refrigerator, Washer

GarageYN: No

FireplaceYN: No

Cooling: Central Air

ExteriorFeatures: Irrigation System, Sidewalk, Sliding Doors, Storage, Tennis Court(s)

Features: Ceiling Fans(s), Split Bedroom

Building Details

NewConstructionYN: No

Exterior material: Stucco

Heating: Central

Roof: Shingle

Miscellaneous

Ownership: Condominium

Occupant Type:
Tenant

Showing Requirements: 24 Hour Notice, Call Listing Agent, Gate Code Required, Lock Box Electronic



Call us now

Phone: 727-888-3292

Email: RealtorCandis@gmail.com



Charles Rutenberg Realty, Inc.
THE STANDARD OF EXCELLENCE