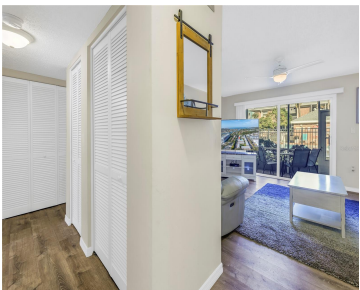
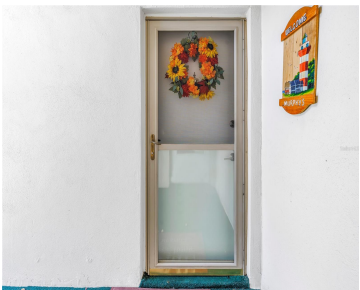


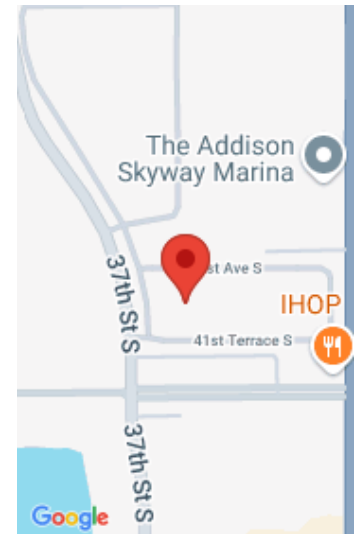
3515 41ST TERRACE SAINT PETERSBURG FL 33711

<https://candiscarmichael.com>



Welcome home to this exceptional first floor pool side unit in the gated 55+ community of Patriot Square. This meticulously maintained condo has been recently renovated throughout and is picture perfect and move-in ready. The current furniture and furnishings are included! Features include a gorgeous kitchen with white shaker-style, wood soft close cabinets, Quartz counter [...]

- 2 beds
- 2 baths
- Residential
- Condominium
- Active
- 1075 sq ft



Call us now

Phone: 727-888-3292
Email: RealtorCandis@gmail.com



Courtesy of

Listing Office: RE/MAX METRO

Status: Active

Office ID: MFR283541001

MLS ID: MFRTB8328500

Description

Virtual Tour: <https://www.propertypanorama.com/instaview/stellar/TB8328500>

Basics

Unit Number: 221

Date added: Added 10 hours ago

Type: Residential

Bathrooms: 2 baths

Floors: 1 floor

Lot size, sq ft: 0 sq ft

UnitNumber: 221

ListOfficeName: RE/MAX METRO

Bathrooms Full: 2

Category: Condominium

Bedrooms: 2 beds

Half baths: 0 half baths

Area, sq ft: 1075 sq ft

Year built: 1973

SubdivisionName: PATRIOT SQUARE APTS

ListAOR: mfrmls

Location Details

Township: 32

Road Surface Type: Asphalt

Property Features



Call us now

Phone: 727-888-3292

Email: RealtorCandis@gmail.com



Charles Rutenberg Realty, Inc.
THE STANDARD OF EXCELLENCE

Interior Features: Ceiling Fans(s), Open Floorplan, Solid Surface Counters

Flooring: Vinyl

Parking Features: Assigned, Guest

Exterior Features: Sidewalk, Sliding Doors, Storage

Utilities: Cable Connected, Fire Hydrant, Public, Sprinkler Recycled, Water Connected

Sewer: Public Sewer

Heating: Central, Electric

Appliances: Dishwasher, Dryer, Microwave, Range, Refrigerator, Washer

Laundry Features: Laundry Closet

Pets Allowed: Cats OK, Dogs OK

Roof: Shingle

Water Source: Public

Cooling: Central Air

Furnished: Furnished

Property Details

Subdivision Name: PATRIOT SQUARE APTS

Levels: One

Foundation Details: Slab

Listing Terms: Cash, Conventional

Parcel Number: 03-32-16-67888-034-2210

Direction Faces: South

Construction Materials: Brick

Association Information

Association Fee Includes: Cable TV, Common Area Taxes, Pool, Escrow Reserves Fund, Fidelity Bond, Insurance, Internet, Maintenance Structure, Maintenance Grounds, Pest Control, Private Road, Recreational Facilities, Sewer, Trash, Water

Association Amenities: Clubhouse, Gated, Pickleball Court(s), Pool, Recreation Facilities, Tennis Court(s)

Community Features: Pool, Tennis Courts

Fees&Taxes

Tax Year: 2023

Tax Annual Amount: \$997

Tax Legal Description: PATRIOT SQUARE APTS SECTION 2 CONDO BLDG 34, APT 221

Tax Lot: 35



Call us now

Phone: 727-888-3292

Email: RealtorCandis@gmail.com



Charles Rutenberg Realty, Inc.
THE STANDARD OF EXCELLENCE

Rooms

Room type	Dimensions	Level	Length	Width
Primary Bedroom	14x14	First	14	14
Bedroom 2	11x10	First	10	11
Living Room	14x15	First	15	14
Kitchen	8x12	First	12	8
Dining Room	12x10	First	10	12

Amenities & Features

Waterfront available: No

AttachedGarageYN: No

PoolPrivateYN: No

CommunityFeatures: Pool, Tennis Courts

Utilities: Cable Connected, Fire Hydrant, Public, Sprinkler Recycled, Water Connected

Amenities: Dishwasher, Dryer, Microwave, Range, Refrigerator, Washer

GarageYN: No

FireplaceYN: No

Cooling: Central Air

ExteriorFeatures: Sidewalk, Sliding Doors, Storage

Features: Ceiling Fans(s), Open Floorplan, Solid Surface Counters

Building Details



Call us now

Phone: 727-888-3292

Email: RealtorCandis@gmail.com



Charles Rutenberg Realty, Inc.
THE STANDARD OF EXCELLENCE

NewConstructionYN: No

Exterior material: Brick

Parking: Assigned, Guest

Heating: Central, Electric

Roof: Shingle

Miscellaneous

Ownership: Condominium **Disclosures:** Condominium Disclosure Available, Seller Property Disclosure

Occupant Type: Vacant **Showing Requirements:** ShowingTime



Call us now

Phone: 727-888-3292

Email: RealtorCandis@gmail.com



Charles Rutenberg Realty, Inc.
THE STANDARD OF EXCELLENCE