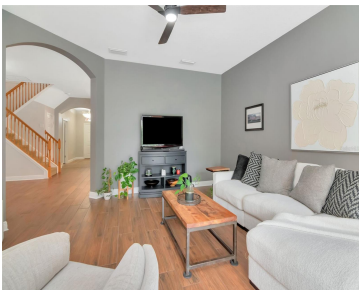
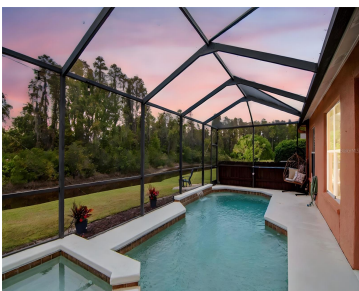


31241 KIRKSHIRE COURT WESLEY CHAPEL FL 33543

https://candiscarmichael.com



Experience Florida living at its finest in this private pool home backing to a lush wooded conservation area in the gated Heatherstone neighborhood of Meadow Pointe. With over 3,000 sq. ft. of indoor/outdoor living space, all bedrooms are conveniently on the main level, plus there's an upstairs bonus room perfect for a family room, playroom, [...]

- 4 beds
- 2 baths
- Residential
- Single Family Residence
- Active
- 2507 sq ft



Courtesy of

Listing Office: COLDWELL BANKER REALTY

Status: Active

Office ID: MFR283503513

MLS ID: MFRTB8444215



Call us now

Phone: 727-888-3292
Email: RealtorCandis@gmail.com



Description

Virtual Tour:

<https://url.usb.m.mimecastprotect.com/s/yjWBC7Dq7ZI3p9nOrHkl6CoZL0X?domain=track.pstmrk.it>

Basics

Bathrooms Full: 2

Category: Single Family Residence

Bedrooms: 4 beds

Half baths: 0 half baths

Area, sq ft: 2507 sq ft

Year built: 2006

SubdivisionName: MEADOW POINTE 03 PRCL
EE & HH

GarageSpaces: 2

Date added: Added 3 hours ago

Type: Residential

Bathrooms: 2 baths

Floors: 2 floors

Lot size, sq ft: 5550 sq ft

View: Park/Greenbelt, Trees/Woods, Water

ListOfficeName: COLDWELL BANKER REALTY

ListAOR: mfrmls

Location Details

Township: 26S

Road Responsibility: Private Maintained Road

Middle Or Junior School: John Long Middle-PO

Road Surface Type: Paved

Elementary School: Double Branch
Elementary

High School: Wiregrass Ranch High-PO

Property Features



Call us now

Phone: 727-888-3292

Email: RealtorCandis@gmail.com



Charles Rutenberg Realty, Inc.
THE STANDARD OF EXCELLENCE

Interior Features: Ceiling Fans(s), Eat-in Kitchen, High Ceilings, Kitchen/Family Room Combo, Open Floorplan, Primary Bedroom Main Floor, Solid Surface Counters, Split Bedroom, Thermostat, Walk-In Closet(s), Window Treatments

Flooring: Carpet, Tile

Patio And Porch Features: Covered, Patio, Screened

Pool Features: Auto Cleaner, Deck, Gunite, Heated, In Ground, Screen Enclosure, Tile

Spa Features: Heated, In Ground

Garage YN: Yes

Garage Spaces: 2

Exterior Features: Dog Run, Private Mailbox, Sidewalk, Sliding Doors

Roof: Shingle

Window Features: Blinds, Double Pane Windows, Drapes, Rods, Window Treatments

Vegetation: Mature Landscaping, Trees/Landscaped

Water Source: Public

Cooling: Central Air, Zoned

Furnished: Unfurnished

Appliances: Convection Oven, Dishwasher, Disposal, Exhaust Fan, Gas Water Heater, Ice Maker, Microwave, Range, Refrigerator

Laundry Features: Electric Dryer Hookup, Inside, Laundry Room, Washer Hookup

Pool Private YN: Yes

Spa YN: Yes

Parking Features: Driveway, Garage Door Opener

Attached Garage YN: Yes

Pets Allowed: Yes

Fencing: Vinyl

Security Features: Gated Community, Smoke Detector(s)

Utilities: BB/HS Internet Available, Cable Available, Electricity Connected, Fiber Optics, Natural Gas Connected, Public, Sewer Connected, Underground Utilities, Water Connected

View: Park/Greenbelt, Trees/Woods, Water

Sewer: Public Sewer

Heating: Central, Electric, Exhaust Fan, Heat Pump, Zoned

Lot Features: Landscaped, Level, Private, Sidewalk, Paved

Property Details



Call us now

Phone: 727-888-3292

Email: RealtorCandis@gmail.com



Charles Rutenberg Realty, Inc.
THE STANDARD OF EXCELLENCE

Subdivision Name: MEADOW POINTE 03
PRCL EE & HH

Parcel Number: 20-26-34-009.0-028.00-041.0

Levels: Two

Direction Faces: East

Foundation Details: Slab

Construction Materials: Block, Concrete, Stucco

Listing Terms: Cash, Conventional, FHA,
VA Loan

Property Condition: Completed

Association Information

Association YN: Yes

Association Fee: 104

Association Fee Frequency: Annually

Association Fee Includes:
Pool, Private Road, Recreational
Facilities

Community Features: Gated Community - No Guard,
Irrigation-Reclaimed Water, Park, Playground, Pool, Sidewalks,
Street Lights

Fees&Taxes

Tax Year: 2025

Tax Annual Amount: \$7,204

**Tax Other Annual Assessment
Amount:** 2076

Tax Legal Description: MEADOW POINTE III PARCEL EE
AND HH PB 52 PG 132 LOT 41 BLOCK 28 OR 8728 PG
2285

Tax Lot: 41

Rooms



Call us now

Phone: 727-888-3292

Email: RealtorCandis@gmail.com



Charles Rutenberg Realty, Inc.
THE STANDARD OF EXCELLENCE

Room type	Dimensions	Level	Length	Width
Foyer	7x14	First	14	7
Bedroom 1	12x11	First	11	12
Bedroom 2	10x12	First	12	10
Bathroom 1	5x9	First	9	5
Bedroom 3	12x14	First	14	12
Primary Bedroom	16x14	First	14	16
Primary Bathroom	12x15	First	15	12
Laundry	6x8	First	8	6
Dining Room	12x13	First	13	12
Dinette	10x7	First	7	10
Kitchen	10x16	First	16	10
Living Room	16x17	First	17	16
Bonus Room	16x21	Second	21	16
Bonus Room	15x11	First	11	15



Call us now

Phone: 727-888-3292

Email: RealtorCandis@gmail.com



Amenities & Features

Waterfront available: No

AttachedGarageYN: Yes

PoolPrivateYN: Yes

Spa Features: Heated, In Ground

CommunityFeatures: Gated Community - No Guard, Irrigation-Reclaimed Water, Park, Playground, Pool, Sidewalks, Street Lights

ExteriorFeatures: Dog Run, Private Mailbox, Sidewalk, Sliding Doors

Utilities: BB/HS Internet Available, Cable Available, Electricity Connected, Fiber Optics, Natural Gas Connected, Public, Sewer Connected, Underground Utilities, Water Connected

Amenities: Convection Oven, Dishwasher, Disposal, Exhaust Fan, Gas Water Heater, Ice Maker, Microwave, Range, Refrigerator

GarageYN: Yes

FireplaceYN: No

Cooling: Central Air, Zoned

Security Features: Gated Community, Smoke Detector(s)

WindowFeatures: Blinds, Double Pane Windows, Drapes, Rods, Window Treatments

PoolFeatures: Auto Cleaner, Deck, Gunitite, Heated, In Ground, Screen Enclosure, Tile

Features: Ceiling Fans(s), Eat-in Kitchen, High Ceilings, Kitchen/Family Room Combo, Open Floorplan, Primary Bedroom Main Floor, Solid Surface Counters, Split Bedroom, Thermostat, Walk-In Closet(s), Window Treatments

Building Details

NewConstructionYN: No

Heating: Central, Electric, Exhaust Fan, Heat Pump, Zoned

Exterior material: Block, Concrete, Stucco **Roof:** Shingle

Parking: Driveway, Garage Door Opener

Miscellaneous

Ownership: Fee Simple

Occupant Type: Owner

Other Structures: Shed(s) **Showing Requirements:** Supra Lock Box, Appointment Only, Gate Code Required, Lock Box Electronic, ShowingTime



Call us now

Phone: 727-888-3292

Email: RealtorCandis@gmail.com



Charles Rutenberg Realty, Inc.
THE STANDARD OF EXCELLENCE