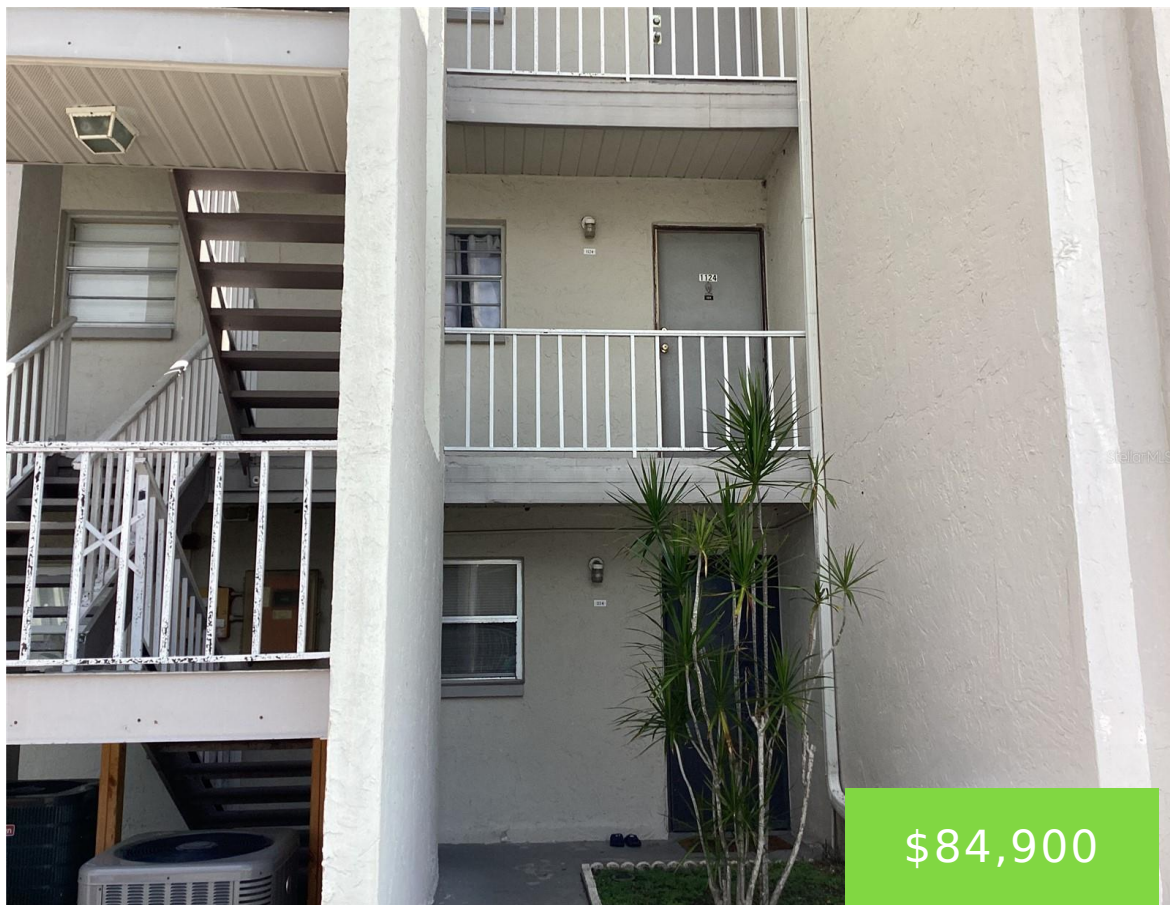
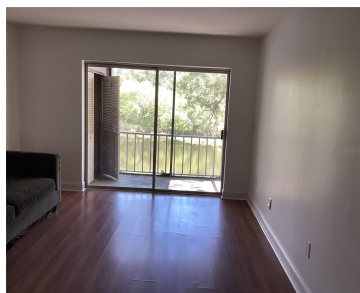


2625 STATE ROAD 590 CLEARWATER FL 33759

<https://candiscarmichael.com>

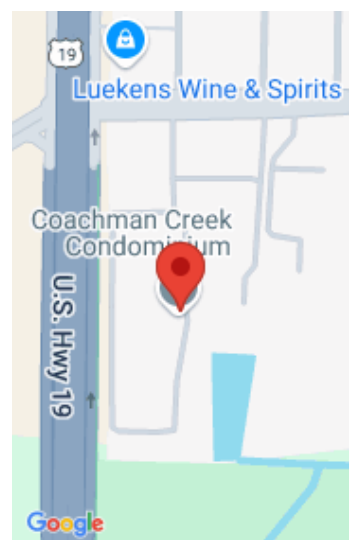


\$84,900



Condo is located minutes away from BayCare Ballpark, home of the Philadelphia Phillies spring training and home to the Clearwater Threshers. 2 Bedroom 1 Bath, corner unit condo on the second floor, with a very nice view of the pond. No back neighbors. Open floor plan concept, a large living room dining room next to [...]

- 2 beds
- 1 bath
- Residential
- Condominium
- Active
- 900 sq ft



Call us now

Phone: 727-888-3292

Email: RealtorCandis@gmail.com



Charles Rutenberg Realty, Inc
THE STANDARD OF EXCELLENCE

Courtesy of

Listing Office: CHARLES RUTENBERG REALTY INC

Status: Active

Office ID: MFR260000779

MLS ID: MFRTB8309425

Description

Virtual Tour: <https://www.propertypanorama.com/instaview/stellar/TB8309425>

Basics

Unit Number: 1124

Date added: Added 2 months ago

Type: Residential

Bathrooms: 1 bath

Floors: 1 floor

Lot size, sq ft: 630428 sq ft

UnitNumber: 1124

ListOfficeName: CHARLES RUTENBERG
REALTY INC

Bathrooms Full: 1

Category: Condominium

Bedrooms: 2 beds

Half baths: 0 half baths

Area, sq ft: 900 sq ft

Year built: 1976

SubdivisionName: COACHMAN CREEK
CONDO

ListAOR: mfrmls

Location Details

Township: 29

Elementary School: McMullen-Booth Elementary-PN

High School: Countryside High-PN

Road Surface Type: Other

Middle Or Junior School: Safety Harbor
Middle-PN

Property Features



Call us now

Phone: 727-888-3292

Email: RealtorCandis@gmail.com



Charles Rutenberg Realty, Inc.
THE STANDARD OF EXCELLENCE

Interior Features: Ceiling Fans(s), Living Room/Dining Room Combo

Flooring: Laminate, Tile

Pool Features: Gunité

Exterior Features: Balcony

Utilities: Electricity Connected, Sewer Connected, Water Connected

Sewer: Public Sewer

Heating: Central

Appliances: Dishwasher, Disposal, Electric Water Heater, Microwave, Range, Refrigerator

Laundry Features: None

Pets Allowed: Cats OK

Roof: Shingle

Water Source: Public

Cooling: Central Air

Property Details

Subdivision Name: COACHMAN CREEK CONDO

Levels: One

Foundation Details: Slab

Listing Terms: Cash

Parcel Number: 08-29-16-16809-011-1124

Direction Faces: West

Construction Materials: Block

Association Information

Association YN: Yes

Association Fee Includes: Common Area Taxes, Pool, Escrow Reserves Fund, Insurance, Maintenance Structure, Maintenance Grounds, Management, Sewer, Trash, Water

Community Features: Community Mailbox, Pool, Tennis Courts

Fees&Taxes

Tax Year: 2023

Tax Annual Amount: \$244

Tax Legal Description: COACHMAN CREEK CONDO BLDG 11, UNIT 1124

Tax Lot: 1124



Call us now

Phone: 727-888-3292

Email: RealtorCandis@gmail.com



Charles Rutenberg Realty, Inc.
THE STANDARD OF EXCELLENCE

Rooms

Room type	Dimensions	Level	Length	Width
Kitchen	10x8	Second	8	10
Primary Bedroom	13x12	Second	12	13
Bedroom 2	11x10	Second	10	11
Living Room	12x12	Second	12	12
Dining Room	12x12	Second	12	12

Amenities & Features

Waterfront available: No

AttachedGarageYN: No

PoolPrivateYN: No

CommunityFeatures: Community Mailbox, Pool, Tennis Courts

PoolFeatures: Gunite

Features: Ceiling Fans(s), Living Room/Dining Room Combo

GarageYN: No

FireplaceYN: No

Cooling: Central Air

ExteriorFeatures: Balcony

Utilities: Electricity Connected, Sewer Connected, Water Connected

Amenities: Dishwasher, Disposal, Electric Water Heater, Microwave, Range, Refrigerator

Building Details

NewConstructionYN: No

Exterior material: Block

Heating: Central

Roof: Shingle



Call us now

Phone: 727-888-3292

Email: RealtorCandis@gmail.com



Charles Rutenberg Realty, Inc.
THE STANDARD OF EXCELLENCE

Miscellaneous

Ownership: Condominium

Occupant Type: Vacant

Showing Requirements: Supra Lock Box



Call us now

Phone: 727-888-3292

Email: RealtorCandis@gmail.com



Charles Rutenberg Realty, Inc.
THE STANDARD OF EXCELLENCE