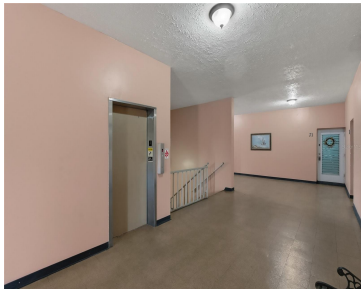
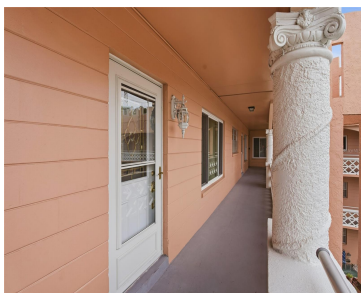


2458 COLUMBIA DRIVE CLEARWATER FL 33763

https://candiscarmichael.com



Welcome to 2458 Columbia Drive #68, located in the desirable On Top of the World, 55+ community in Clearwater, Florida! This third-floor, one-bedroom, one-bathroom condo offers an open and efficient layout with 825 square feet of comfortable living space. No one living above you ~ the best spot to be! Newer Hurricane-Rated Windows and Hurricane [...]

- 1 bed
- 1 bath
- Residential
- Condominium
- Active
- 825 sq ft



Courtesy of

Listing Office: COASTAL PROPERTIES GROUP INTERNATIONAL
Status: Active

Office ID: MFR260031031
MLS ID: MFRTB8446641



Call us now
Phone: 727-888-3292
Email: RealtorCandis@gmail.com



Description

Virtual Tour:

<https://hausimages.vids.io/videos/a49bdeb61d1aedc82e/2458-columbia-drive-68-clearwater-fl-33763>

Basics

Unit Number: 68

Date added: Added 2 months ago

Type: Residential

Bathrooms: 1 bath

Floors: 3 floors

Year built: 1972

View: Trees/Woods

ListOfficeName: COASTAL PROPERTIES GROUP
INTERNATIONAL

Bathrooms Full: 1

Category: Condominium

Bedrooms: 1 bed

Half baths: 0 half baths

Area, sq ft: 825 sq ft

UnitNumber: 68

SubdivisionName: ON TOP OF THE WORLD

ListAOR: mfrmls

Location Details

Township: 28

Elementary School: Leila G Davis Elementary-PN

High School: Countryside High-PN

Road Surface Type: Paved

Middle Or Junior School: Safety Harbor
Middle-PN

Property Features



Call us now

Phone: 727-888-3292

Email: RealtorCandis@gmail.com



Charles Rutenberg Realty, Inc.
THE STANDARD OF EXCELLENCE

Interior Features: Ceiling Fans(s), Kitchen/Family Room Combo, Living Room/Dining Room Combo, Open Floorplan, Window Treatments

Flooring: Carpet, Tile

Parking Features: Assigned, Guest

Exterior Features: Lighting, Sidewalk

Window Features: Blinds

Vegetation: Trees/Landscaped

Water Source: Public

Cooling: Central Air

Furnished: Negotiable

Appliances: Built-In Oven, Cooktop, Electric Water Heater, Range, Range Hood, Refrigerator

Laundry Features: Common Area, Same Floor As Condo Unit

Pets Allowed: Cats OK, Dogs OK, Yes

Roof: Membrane

Utilities: BB/HS Internet Available, Cable Available, Electricity Connected, Public, Sewer Connected, Water Connected

View: Trees/Woods

Sewer: Public Sewer

Heating: Central, Electric

Property Details

Subdivision Name: ON TOP OF THE WORLD

Levels: One

Foundation Details: Slab

Listing Terms: Cash, Conventional

Parcel Number: 31-28-16-64017-026-0680

Direction Faces: Southeast

Construction Materials: Block

Association Information

Association YN: Yes

Association Fee Frequency: Monthly

Association Fee: 542

Association Fee Includes: Cable TV, Pool, Internet, Maintenance Structure, Maintenance Grounds, Management, Private Road, Recreational Facilities, Sewer, Trash, Water

Community Features: Association Recreation - Lease, Buyer Approval Required, Clubhouse, Dog Park, Fitness Center, Gated Community - Guard, Golf, Irrigation-Reclaimed Water, Pool, Sidewalks, Tennis Court(s)



Call us now

Phone: 727-888-3292

Email: RealtorCandis@gmail.com



Charles Rutenberg Realty, Inc.
THE STANDARD OF EXCELLENCE

Fees&Taxes

Tax Year: 2024

Tax Annual Amount: \$517

Tax Legal Description: ON TOP OF THE WORLD UNIT 20 CONDO BLDG 26, APT 68 "(WING ""G"" SW)"

Tax Lot: 68

Rooms

Room type	Dimensions	Level	Length	Width
Living Room	10x13	First	13	10
Kitchen	9x9	First	9	9
Dining Room	8x13	First	13	8
Primary Bedroom	11x16	First	16	11
Bonus Room	9x16	First	16	9

Amenities & Features

Waterfront available: No

AttachedGarageYN: No

PoolPrivateYN: No

CommunityFeatures: Association Recreation - Lease, Buyer Approval Required, Clubhouse, Dog Park, Fitness Center, Gated Community - Guard, Golf, Irrigation-Reclaimed Water, Pool, Sidewalks, Tennis Court(s)

ExteriorFeatures: Lighting, Sidewalk

Features: Ceiling Fans(s), Kitchen/Family Room Combo, Living Room/Dining Room Combo, Open Floorplan, Window Treatments

GarageYN: No

FireplaceYN: No

Cooling: Central Air

WindowFeatures: Blinds

Utilities: BB/HS Internet Available, Cable Available, Electricity Connected, Public, Sewer Connected, Water Connected

Amenities: Built-In Oven, Cooktop, Electric Water Heater, Range, Range Hood, Refrigerator

Building Details

NewConstructionYN: No

Exterior material: Block

Parking: Assigned, Guest

Heating: Central, Electric

Roof: Membrane

Miscellaneous

Ownership: Fee Simple

Occupant Type: Vacant

Showing Requirements: Supra Lock Box, ShowingTime



Call us now

Phone: 727-888-3292

Email: RealtorCandis@gmail.com



Charles Rutenberg Realty, Inc.
THE STANDARD OF EXCELLENCE