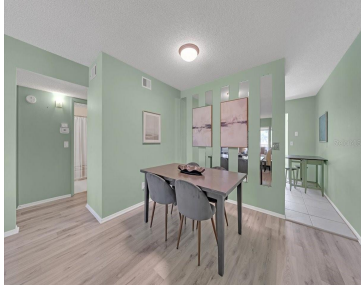
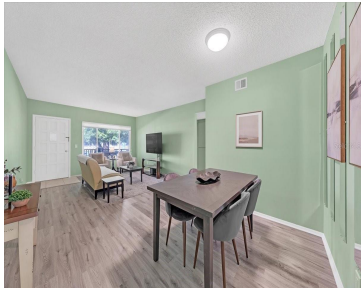


2401 FRANCISCAN DRIVE CLEARWATER FL 33763

<https://candiscarmichael.com>



\$150,000



- 2 beds
- 2 baths
- Residential
- Condominium
- Active
- 1080 sq ft



Located in On Top of the World, a premier 55+ adult condominium community on over 300 acres offers resort-style living with two golf courses that are free to the residents, pickleball courts, shuffleboard/lawn bowling, 4 tennis courts, horseshoe pits, two recreation centers with events that include live bands and balls, over 60 active clubs, billiards [...]

Courtesy of

Listing Office: SMITH & ASSOCIATES REAL ESTATE

Status: Active

Office ID: MFR616100

MLS ID: MFRTB8495472



Call us now

Phone: 727-888-3292

Email: RealtorCandis@gmail.com



Basics

Unit Number: 39

Date added: Added 2 hours ago

Type: Residential

Bathrooms: 2 baths

Floors: 2 floors

Lot size, sq ft: 1 sq ft

UnitNumber: 39

SubdivisionName: ON TOP OF THE WORLD

ListAOR: mfrmls

Bathrooms Full: 2

Category: Condominium

Bedrooms: 2 beds

Half baths: 0 half baths

Area, sq ft: 1080 sq ft

Year built: 1975

View: Garden

ListOfficeName: SMITH & ASSOCIATES REAL ESTATE

Location Details

Township: 28

Elementary School: Leila G Davis Elementary-PN

High School: Countryside High-PN

Road Surface Type: Asphalt

Middle Or Junior School: Safety Harbor Middle-PN

Property Features



Call us now

Phone: 727-888-3292

Email: RealtorCandis@gmail.com



Charles Rutenberg Realty, Inc.
THE STANDARD OF EXCELLENCE

Interior Features: Open Floorplan

Appliances: Cooktop, Dishwasher, Dryer, Refrigerator, Washer, Water Softener

Flooring: Ceramic Tile, Luxury Vinyl

Laundry Features: Inside, Laundry Closet, Washer Hookup

Pets Allowed: Cats OK, Dogs OK, Yes

Exterior Features: Sidewalk

Roof: Built-Up

Window Features: ENERGY STAR Qualified Windows, Insulated Windows

Architectural Style: Florida, Traditional

Utilities: BB/HS Internet Available, Cable Connected, Electricity Connected, Sewer Connected, Water Connected

View: Garden

Water Source: Public

Sewer: Public Sewer

Cooling: Central Air

Heating: Central, Electric

Furnished: Negotiable

Property Details

Subdivision Name: ON TOP OF THE WORLD

Parcel Number: 31-28-16-64035-039-0390

Levels: One

Direction Faces: East

Foundation Details: Slab

Construction Materials: Block

Listing Terms: Cash, Conventional

Association Information

Association YN: Yes

Association Fee Frequency: Monthly

Association Fee Includes: Cable TV, Pool, Insurance, Internet, Maintenance Structure, Maintenance Grounds, Maintenance, Recreational Facilities, Sewer, Trash, Water

Association Amenities: Cable TV, Clubhouse, Fitness Center, Gated, Golf Course, Park, Pickleball Court(s), Pool, Recreation Facilities, Shuffleboard Court, Spa/Hot Tub, Tennis Court(s), Trail(s)

Community Features: Clubhouse, Dog Park, Fitness Center, Gated Community - Guard, Golf Carts OK, Golf, Park, Pool, Sidewalks, Tennis Court(s)

Fees&Taxes



Call us now

Phone: 727-888-3292

Email: RealtorCandis@gmail.com



Charles Rutenberg Realty, Inc.
THE STANDARD OF EXCELLENCE

Tax Year: 2025

Tax Annual Amount: \$2,066

Tax Legal Description: ON TOP OF THE WORLD UNIT 36
CONDO BLDG 39, APT 39

Tax Lot: 00

Rooms

Room type	Dimensions	Level	Length	Width
Living Room	12x12	First	12	12
Dining Room	8x6	First	6	8
Kitchen	8x6	First	6	8
Dinette	7x6	First	6	7
Florida Room	23x13	First	13	23
Primary Bedroom	13x12	First	12	13
Bedroom 2	13x12	First	12	13

Amenities & Features



Call us now

Phone: 727-888-3292

Email: RealtorCandis@gmail.com



Waterfront available: No

AttachedGarageYN: No

PoolPrivateYN: No

CommunityFeatures: Clubhouse, Dog Park, Fitness Center, Gated Community - Guard, Golf Carts OK, Golf, Park, Pool, Sidewalks, Tennis Court(s)

ExteriorFeatures: Sidewalk

Features: Open Floorplan

GarageYN: No

FireplaceYN: No

Cooling: Central Air

WindowFeatures: ENERGY STAR Qualified Windows, Insulated Windows

Utilities: BB/HS Internet Available, Cable Connected, Electricity Connected, Sewer Connected, Water Connected

Amenities: Cooktop, Dishwasher, Dryer, Refrigerator, Washer, Water Softener

Building Details

ArchitecturalStyle: Florida, Traditional

Heating: Central, Electric

Roof: Built-up

NewConstructionYN: No

Exterior material: Block

Miscellaneous

Ownership: Condominium

Showing Requirements: ShowingTime

Occupant Type: Vacant



Call us now

Phone: 727-888-3292

Email: RealtorCandis@gmail.com



Charles Rutenberg Realty, Inc.
THE STANDARD OF EXCELLENCE