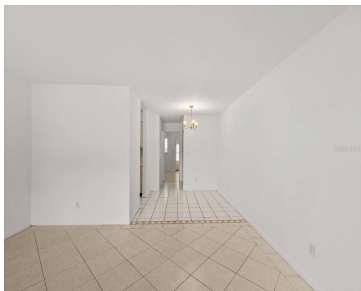
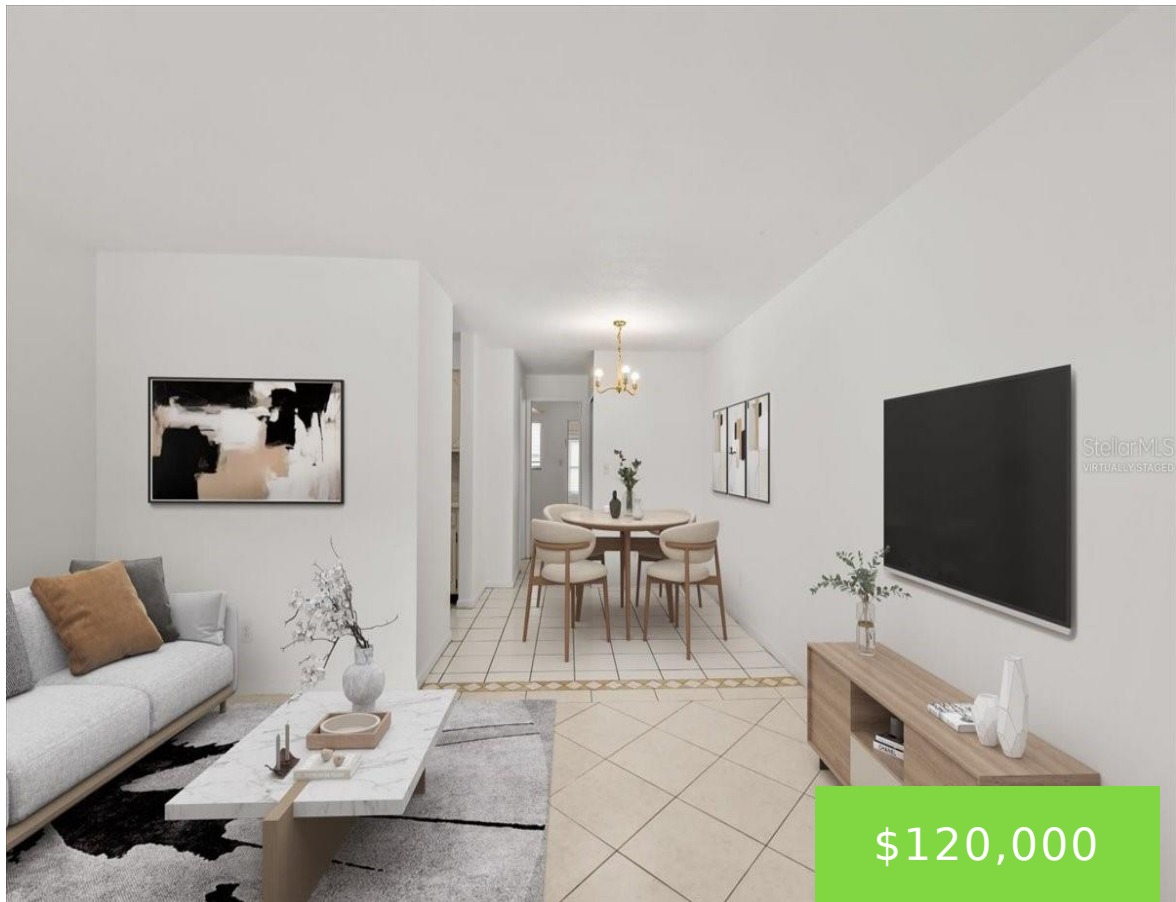


2353 SHELLEY STREET CLEARWATER FL 33765

https://candiscarmichael.com



One or more photo(s) has been virtually staged. Discover this cozy Clearwater one-bedroom, one-bath condo perfectly positioned just minutes from St. Petersburg College’s Clearwater Campus. Whether you’re a first-time buyer, student, seasonal resident, or investor, this property offers the versatility to meet a wide range of needs. With the flexibility to host short-term rentals, secure [...]

- 1 bed
- 1 bath
- Residential
- Condominium
- Active
- 585 sq ft



Courtesy of

Listing Office: COMPASS FLORIDA LLC

Status: Active

Office ID: MFR249532121

MLS ID: MFRTB8421940



Call us now

Phone: 727-888-3292
Email: RealtorCandis@gmail.com



Description

Virtual Tour: <https://www.propertypanorama.com/instaview/stellar/TB8421940>

Basics

Unit Number: 5

Date added: Added 3 months ago

Type: Residential

Bathrooms: 1 bath

Floors: 1 floor

Lot size, sq ft: 0 sq ft

UnitNumber: 5

ListOfficeName: COMPASS FLORIDA LLC

Bathrooms Full: 1

Category: Condominium

Bedrooms: 1 bed

Half baths: 0 half baths

Area, sq ft: 585 sq ft

Year built: 1966

SubdivisionName: SHELLEY GARDENS 2 CONDO

ListAOR: mfrmls

Location Details

Township: 29

Elementary School: Eisenhower Elementary-PN

High School: Clearwater High-PN

Road Surface Type: Asphalt

Middle Or Junior School: Oak Grove Middle-PN

Property Features



Call us now

Phone: 727-888-3292

Email: RealtorCandis@gmail.com



Charles Rutenberg Realty, Inc.
THE STANDARD OF EXCELLENCE

Interior Features: L Dining,
Primary Bedroom Main Floor

Flooring: Tile

Pets Allowed: Yes

Roof: Membrane

Water Source: Public

Cooling: Wall/Window Unit(s)

Appliances: Cooktop, Electric Water Heater, Exhaust
Fan, Range, Range Hood, Refrigerator

Laundry Features: Common Area

Exterior Features: Awning(s), Sidewalk

Utilities: Cable Available, Electricity Available, Phone
Available, Sewer Connected, Water Available

Sewer: Public Sewer

Heating: Ductless

Property Details

Subdivision Name: SHELLEY GARDENS 2 CONDO

Levels: One

Foundation Details: Concrete Perimeter, Slab

Listing Terms: Cash, Conventional, FHA

Parcel Number: 18-29-16-80568-000-0050

Direction Faces: North

Construction Materials: Block, Concrete

Association Information

Association YN: Yes

Association Fee Frequency: Monthly

Association Fee: 353.94

Association Fee Includes: Escrow Reserves
Fund, Insurance, Maintenance Structure,
Maintenance Grounds

Community Features: Community Mailbox,
Sidewalks, Street Lights

Fees&Taxes

Tax Year: 2024

Tax Annual Amount:
\$1,043

Tax Legal Description: SHELLEY GARDENS UNIT 2 CONDO UNIT
5



Call us now

Phone: 727-888-3292

Email: RealtorCandis@gmail.com



Charles Rutenberg Realty, Inc.
THE STANDARD OF EXCELLENCE

Rooms

Room type	Dimensions	Level	Length	Width
Living Room	12x15	First	15	12
Dining Room	9x8	First	8	9
Kitchen	8x6	First	6	8
Primary Bedroom	5x7	First	7	5
Utility Room	5x4	First	4	5
Bedroom 1	11x14	First	14	11
Florida Room	5x14	First	14	5

Amenities & Features

Waterfront available: No

AttachedGarageYN: No

PoolPrivateYN: No

CommunityFeatures: Community Mailbox, Sidewalks, Street Lights

Utilities: Cable Available, Electricity Available, Phone Available, Sewer Connected, Water Available

Amenities: Cooktop, Electric Water Heater, Exhaust Fan, Range, Range Hood, Refrigerator

GarageYN: No

FireplaceYN: No

Cooling: Wall/Window Unit(s)

ExteriorFeatures: Awning(s), Sidewalk

Features: L Dining, Primary Bedroom Main Floor



Call us now

Phone: 727-888-3292

Email: RealtorCandis@gmail.com



Charles Rutenberg Realty, Inc.
THE STANDARD OF EXCELLENCE

Building Details

NewConstructionYN: No

Exterior material: Block, Concrete

Heating: Ductless

Roof: Membrane

Miscellaneous

Ownership: Fee Simple

Occupant Type: Vacant

Showing Requirements: Supra Lock Box, Appointment Only



Call us now

Phone: 727-888-3292

Email: RealtorCandis@gmail.com



Charles Rutenberg Realty, Inc.
THE STANDARD OF EXCELLENCE