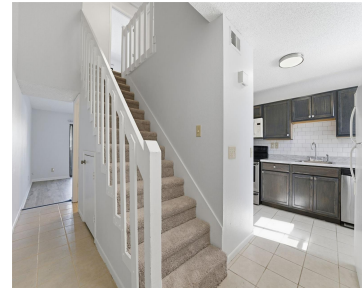


22707 WATSEEDGE BOULEVARD LAND O LAKES FL 34639

<https://candiscarmichael.com>



\$149,900



RECENTLY REMODELED AND MOVE IN READY!! This updated 2-bedroom, 1.5-bath condo in the established Chelsea Meadows community offers low-maintenance living with a functional two-story layout and thoughtful upgrades throughout. The main level features new light-gray vinyl plank flooring, fresh light-gray interior paint, and an open living area that flows seamlessly to a private fenced patio—ideal [...]

- 2 beds
- 2 baths
- Residential
- Condominium
- Active
- 1032 sq ft



Courtesy of

Listing Office: EXP REALTY LLC

Status: Active

Office ID: MFR261010944

MLS ID: MFRW7880035



Call us now

Phone: 727-888-3292

Email: RealtorCandis@gmail.com



Charles Rutenberg Realty, Inc.
THE STANDARD OF EXCELLENCE

Basics

Unit Number: 57

Bathrooms Half: 1

Category: Condominium

Bedrooms: 2 beds

Half baths: 1 half bath

Area, sq ft: 1032 sq ft

Year built: 1988

SubdivisionName: CHELSEA MEADOWS CONDO

ListAOR: mfrmls

Bathrooms Full: 1

Date added: Added 4 hours ago

Type: Residential

Bathrooms: 2 baths

Floors: 2 floors

Lot size, sq ft: 2604151 sq ft

UnitNumber: 57

ListOfficeName: EXP REALTY LLC

Location Details

Township: 26S

Road Surface Type: Asphalt, Paved

Road Responsibility: Public Maintained Road

Elementary School: Pine View Elementary-PO

Middle Or Junior School: Pine View Middle-PO

High School: Land O' Lakes High-PO

Property Features

Interior Features: PrimaryBedroom
Upstairs

Appliances: Dishwasher, Dryer, Microwave, Range,
Refrigerator, Washer

Flooring: Carpet, Tile

Laundry Features: Inside, Upper Level

Pets Allowed: No

Exterior Features: Lighting, Sidewalk

Roof: Shingle

Utilities: Electricity Available, Sewer Connected,
Water Connected

Water Source: Public

Sewer: Public Sewer

Cooling: Central Air

Heating: Central

Furnished: Unfurnished



Call us now

Phone: 727-888-3292

Email: RealtorCandis@gmail.com



Charles Rutenberg Realty, Inc.
THE STANDARD OF EXCELLENCE

Property Details

Subdivision Name: CHELSEA MEADOWS CONDO

Levels: Two

Foundation Details: Slab

Listing Terms: Cash, Conventional

Parcel Number: 19-26-18-0240-10500-0570

Direction Faces: South

Construction Materials: Metal Siding, Frame

Association Information

Association YN: Yes

Association Fee Includes: Maintenance Grounds, Trash

Community Features: Playground, Pool

Fees&Taxes

Tax Year: 2024

Tax Annual Amount: \$1,738

Tax Legal Description: CHELSEA MEADOWS A CONDOMINIUM OR 6900 PG 460 BUILDING 105 UNIT 57 OR 9166 PG 2302

Rooms

Room type	Level
Primary Bedroom	First
Living Room	First
Kitchen	First



Call us now

Phone: 727-888-3292

Email: RealtorCandis@gmail.com



Charles Rutenberg Realty, Inc.
THE STANDARD OF EXCELLENCE

Amenities & Features

Waterfront available: No

AttachedGarageYN: No

PoolPrivateYN: No

CommunityFeatures: Playground, Pool

Utilities: Electricity Available, Sewer Connected, Water Connected

Amenities: Dishwasher, Dryer, Microwave, Range, Refrigerator, Washer

GarageYN: No

FireplaceYN: No

Cooling: Central Air

ExteriorFeatures: Lighting, Sidewalk

Features: PrimaryBedroom Upstairs

Building Details

NewConstructionYN: No

Exterior material: Frame, Metal Siding

Heating: Central

Roof: Shingle

Miscellaneous

Ownership: Condominium

Occupant Type:
Vacant

Showing Requirements: Appointment Only, Combination Lock Box, ShowingTime



Call us now

Phone: 727-888-3292

Email: RealtorCandis@gmail.com



Charles Rutenberg Realty, Inc.
THE STANDARD OF EXCELLENCE