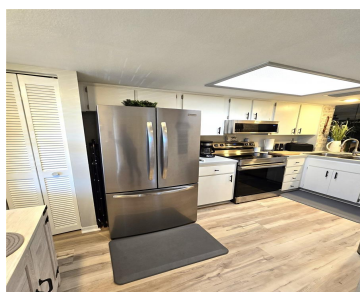


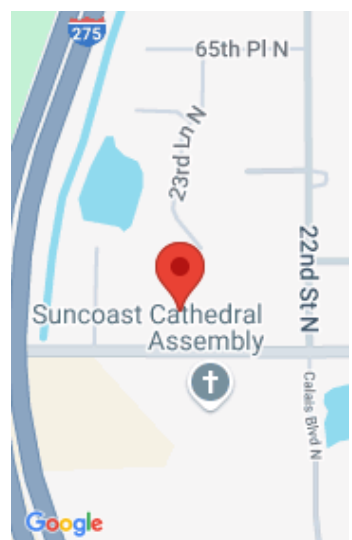
2225 62ND AVENUE SAINT PETERSBURG FL 33702

<https://candiscarmichael.com>



This ADORABLE & COZY 2/2 is tucked away in the heart of St Petersburg. Upon the entrance, you will find an updated EAT IN kitchen with stainless steel appliances and breakfast bar that overlooks the living and dining area. Just off the kitchen is a hallway with full size washer and dryer. Just off the [...]

- 2 beds
- 2 baths
- Residential
- Condominium
- Active
- 935 sq ft



Call us now

Phone: 727-888-3292
Email: RealtorCandis@gmail.com



Courtesy of

Listing Office: CHARLES RUTENBERG REALTY INC

Status: Active

Office ID: MFR260000779

MLS ID: MFRTB8332571

Description

Virtual Tour: <https://www.propertypanorama.com/instaview/stellar/TB8332571>

Basics

Unit Number: 3202

Date added: Added 5 days ago

Type: Residential

Bathrooms: 2 baths

Floors: 2 floors

Lot size, sq ft: 104047 sq ft

UnitNumber: 3202

ListOfficeName: CHARLES RUTENBERG REALTY
INC

Bathrooms Full: 2

Category: Condominium

Bedrooms: 2 beds

Half baths: 0 half baths

Area, sq ft: 935 sq ft

Year built: 1985

SubdivisionName: CHATEAUX VERSAILLES

ListAOR: mfrmls

Location Details

Township: 30

Road Surface Type: Paved

Elementary School: Lynch Elementary-PN **Middle Or Junior School:** Meadowlawn Middle-PN

High School: Northeast High-PN

Property Features



Call us now

Phone: 727-888-3292

Email: RealtorCandis@gmail.com



Charles Rutenberg Realty, Inc.
THE STANDARD OF EXCELLENCE

Interior Features: Eat-in Kitchen, Living Room/Dining Room Combo, Walk-In Closet(s)

Flooring: Luxury Vinyl

Pets Allowed: Cats OK, Dogs OK

Roof: Shingle

Water Source: Public

Cooling: Central Air

Appliances: Dishwasher, Disposal, Dryer, Electric Water Heater, Microwave, Range, Washer

Laundry Features: Inside

Exterior Features: Other

Utilities: Cable Available, Cable Connected, Electricity Available, Electricity Connected, Sewer Available, Sewer Connected, Street Lights

Sewer: Public Sewer

Heating: Central

Property Details

Subdivision Name: CHATEAUX VERSAILLES

Levels: Two

Foundation Details: Slab

Listing Terms: Cash, Conventional, VA Loan

Parcel Number: 35-30-16-14903-003-3202

Direction Faces: West

Construction Materials: Block

Association Information

Association YN: Yes

Association Fee Frequency: Monthly

Community Features: Clubhouse, Deed Restrictions, Pool

Association Fee: 447

Association Fee Includes: Cable TV, Pool, Escrow Reserves Fund, Insurance, Internet, Maintenance Structure, Maintenance Grounds, Recreational Facilities, Sewer, Trash, Water

Fees&Taxes

Tax Year: 2024

Tax Legal Description: CHATEAUX VERSAILLES FORE CONDO BLDG 3, UNIT 3202

Tax Annual Amount: \$1,249

Tax Lot: 3202



Call us now

Phone: 727-888-3292

Email: RealtorCandis@gmail.com



Charles Rutenberg Realty, Inc.
THE STANDARD OF EXCELLENCE

Rooms

Room type	Level
Kitchen	Second
Dining Room	Second
Living Room	Second
Primary Bedroom	Second
Bedroom 2	Second
Florida Room	Second

Amenities & Features

Waterfront available: No

AttachedGarageYN: No

PoolPrivateYN: No

CommunityFeatures: Clubhouse, Deed Restrictions, Pool

Utilities: Cable Available, Cable Connected, Electricity Available, Electricity Connected, Sewer Available, Sewer Connected, Street Lights

Amenities: Dishwasher, Disposal, Dryer, Electric Water Heater, Microwave, Range, Washer

GarageYN: No

FireplaceYN: No

Cooling: Central Air

ExteriorFeatures: Other

Features: Eat-in Kitchen, Living Room/Dining Room Combo, Walk-In Closet(s)

Building Details



Call us now

Phone: 727-888-3292

Email: RealtorCandis@gmail.com



Charles Rutenberg Realty, Inc.
THE STANDARD OF EXCELLENCE

NewConstructionYN: No

Exterior material: Block

Heating: Central

Roof: Shingle

Miscellaneous

Ownership: Fee Simple

Occupant Type: Owner

Showing Requirements: Appointment Only, ShowingTime



Call us now

Phone: 727-888-3292

Email: RealtorCandis@gmail.com



Charles Rutenberg Realty, Inc.
THE STANDARD OF EXCELLENCE