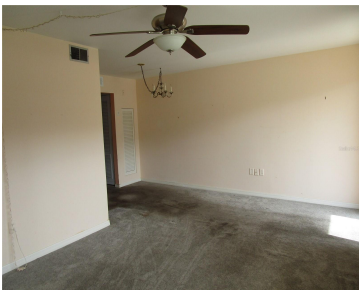


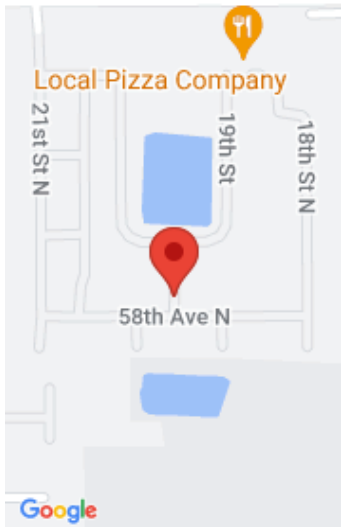
2011 58TH AVENUE ST PETERSBURG FL 33714

https://candiscarmichael.com



St. Pete's Best Kept Secret! 1BR/1Bth 1st Floor Condo in "M" Building. Carpet flooring in Living Room and Dining Room. Laminate Flooring in Kitchen and Bedroom. Master bedroom with ceiling fan, walk-in closet. Tiles bath with step-in shower! Front entry has beautiful gardens for your relaxing enjoyment. Monthly maintenance of \$449.00 includes gas, water & [...]

- 1 bed
- 1 bath
- Residential
- Condominium
- Active
- 585 sq ft



Call us now

Phone: 727-888-3292
Email: RealtorCandis@gmail.com



Courtesy of

Listing Office: CHARLES RUTENBERG REALTY INC

Status: Active

Office ID: MFR260000779

MLS ID: MFRU8229773

Description

Virtual Tour: <https://www.propertypanorama.com/instaview/stellar/U8229773>

Basics

Unit Number: 7

Date added: Added 1 month ago

Type: Residential

Bathrooms: 1 bath

Floors: 2 floors

Lot size, sq ft: 78387 sq ft

UnitNumber: 7

ListOfficeName: CHARLES RUTENBERG REALTY INC

Bathrooms Full: 1

Category: Condominium

Bedrooms: 1 bed

Half baths: 0 half baths

Area, sq ft: 585 sq ft

Year built: 1966

SubdivisionName: TOWN APTS CONDO

ListAOR: mfrmls

Location Details

Township: 30

Road Responsibility: Private Maintained Road

Middle Or Junior School: Meadowlawn
Middle-PN

Road Surface Type: Asphalt

Elementary School: John M Sexton
Elementary-PN

High School: Northeast High-PN

Property Features



Call us now

Phone: 727-888-3292

Email: RealtorCandis@gmail.com



Charles Rutenberg Realty, Inc.
THE STANDARD OF EXCELLENCE

Interior Features: Ceiling Fans(s) **Appliances:** Range, Refrigerator
Flooring: Carpet, Laminate, Tile **Laundry Features:** Common Area
Pool Features: Heated **Spa Features:** In Ground
Carport YN: Yes **Carport Spaces:** 1
Pets Allowed: No **Exterior Features:** Rain Gutters, Sidewalk
Roof: Shingle **Utilities:** Cable Connected, Electricity Connected, Natural Gas Connected, Sewer Connected, Street Lights, Water Connected
Water Source: Public **Sewer:** Public Sewer
Cooling: Central Air **Heating:** Electric, Natural Gas
Furnished: Unfurnished

Property Details

Subdivision Name: TOWN APTS CONDO **Parcel Number:** 36-30-16-91404-013-0070
Levels: One **Direction Faces:** South
Foundation Details: Slab **Construction Materials:** Block
Listing Terms: Cash, Conventional

Association Information

Association YN: Yes **Association Fee Frequency:** Monthly
Association Fee Includes: Cable TV, Common Area Taxes, Pool, Escrow Reserves Fund, Fidelity Bond, Gas, Insurance, Internet, Maintenance Structure, Maintenance Grounds, Maintenance, Management, Private Road, Recreational Facilities, Security, Sewer, Trash, Water
Association Amenities: Cable TV, Clubhouse, Shuffleboard Court, Wheelchair Access
Community Features: Association Recreation - Owned, Buyer Approval Required, Clubhouse, Golf Carts OK, Pool, Sidewalks

Fees&Taxes



Call us now

Phone: 727-888-3292

Email: RealtorCandis@gmail.com



Charles Rutenberg Realty, Inc.
THE STANDARD OF EXCELLENCE

Rooms

Room type	Dimensions	Level	Length	Width
Living Room	13x14	First	14	13
Dining Room	8x8	First	8	8
Kitchen	8x8	First	8	8
Primary Bedroom	12x14	First	14	12
Florida Room	8x15	First	15	8

Amenities & Features

- Waterfront available:** No

AttachedGarageYN: No

PoolPrivateYN: No

Spa Features: In Ground

ExteriorFeatures: Rain Gutters, Sidewalk

Utilities: Cable Connected, Electricity Connected, Natural Gas Connected, Sewer Connected, Street Lights, Water Connected

Amenities: Range, Refrigerator
- GarageYN:** No

FireplaceYN: No

Cooling: Central Air

CommunityFeatures: Association Recreation - Owned, Buyer Approval Required, Clubhouse, Golf Carts OK, Pool, Sidewalks

PoolFeatures: Heated

Features: Ceiling Fans(s)

Building Details

NewConstructionYN: No

Exterior material: Block

Heating: Electric, Natural Gas

Roof: Shingle

Miscellaneous

Ownership: Fee Simple

Occupant Type: Vacant

Showing Requirements: ShowingTime



Call us now

Phone: 727-888-3292

Email: RealtorCandis@gmail.com



Charles Rutenberg Realty, Inc.
THE STANDARD OF EXCELLENCE