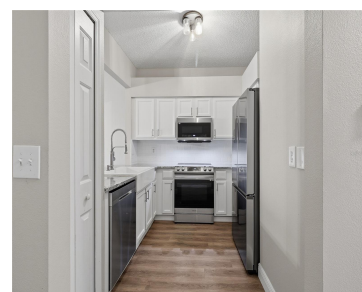
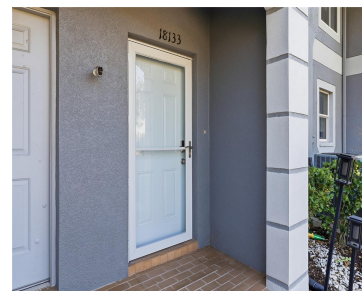


18133 PARADISE POINT DRIVE TAMPA FL 33647

<https://candiscarmichael.com>



\$249,900



Step into your stunningly updated 2-bedroom, 2.5-bath retreat nestled in the lively Heritage Isles Golf and Country Club community. Enjoy endless amenities, from a sparkling resort-style pool with a water slide to beach volleyball, basketball, and tennis courts, plus a playground and a top-rated 18-hole public golf course with a driving range. Picture yourself winding [...]

- 2 beds
- 3 baths
- Residential
- Townhouse
- Pending
- 1580 sq ft



Courtesy of

Listing Office: DALTON WADE INC

Status: Pending

Office ID: MFR260031661

MLS ID: MFRTB8471923



Call us now

Phone: 727-888-3292

Email: RealtorCandis@gmail.com



Charles Rutenberg Realty, Inc.
THE STANDARD OF EXCELLENCE

Description

Virtual Tour: <https://www.propertypanorama.com/instaview/stellar/TB8471923>

Basics

Bathrooms Full: 2

Date added: Added 3 hours ago

Type: Residential

Bathrooms: 3 baths

Floors: 2 floors

Lot size, sq ft: 1832 sq ft

SubdivisionName: NASSAU PT TH HERITAGE IS PH 1

ListAOR: mfrmls

Bathrooms Half: 1

Category: Townhouse

Bedrooms: 2 beds

Half baths: 1 half bath

Area, sq ft: 1580 sq ft

Year built: 2002

ListOfficeName: DALTON WADE INC

Location Details

Township: 27

Road Surface Type: Paved

Property Features



Call us now

Phone: 727-888-3292

Email: RealtorCandis@gmail.com



Charles Rutenberg Realty, Inc.
THE STANDARD OF EXCELLENCE

Interior Features: Ceiling Fans(s), High Ceilings, Solid Surface Counters

Appliances: Dishwasher, Disposal, Dryer, Electric Water Heater, Microwave, Range, Refrigerator, Washer

Flooring: Laminate, Tile

Laundry Features: Inside

Pets Allowed: Cats OK, Dogs OK, Number Limit, Yes

Exterior Features: Private Entrance, Sidewalk, Sliding Doors

Roof: Shingle

Utilities: BB/HS Internet Available, Electricity Connected, Sewer Connected, Water Connected

Water Source: Public

Sewer: Public Sewer

Cooling: Central Air

Heating: Central

Furnished: Unfurnished

Property Details

Subdivision Name: NASSAU PT TH HERITAGE IS PH 1

Parcel Number: A-10-27-20-5IK-000015-00004.0

Levels: Two

Direction Faces: West

Foundation Details: Slab

Construction Materials: Block, Concrete

Listing Terms: Cash, Conventional, FHA, VA Loan

Association Information

Association YN: Yes

Association Fee: 364

Association Fee Frequency: Monthly

Association Fee Includes: Common Area Taxes, Maintenance Grounds, Management, Private Road, Sewer, Trash, Water

Community Features: Clubhouse, Deed Restrictions, Fitness Center, Golf, Park, Pool, Sidewalks, Tennis Court(s)

Fees&Taxes



Call us now

Phone: 727-888-3292

Email: RealtorCandis@gmail.com



Charles Rutenberg Realty, Inc.
THE STANDARD OF EXCELLENCE

Tax Year: 2024

Tax Annual Amount: \$4,863

Tax Other Annual Assessment Amount: 1467

Tax Legal Description: NASSAU POINTE TOWNHOMES AT HERITAGE ISLES PH 1 LOT 4 BLOCK 15

Tax Lot: 4

Rooms

Room type	Level
Kitchen	First
Primary Bedroom	Second
Living Room	First

Amenities & Features

Waterfront available: No

AttachedGarageYN: No

PoolPrivateYN: No

CommunityFeatures: Clubhouse, Deed Restrictions, Fitness Center, Golf, Park, Pool, Sidewalks, Tennis Court(s)

Utilities: BB/HS Internet Available, Electricity Connected, Sewer Connected, Water Connected

Amenities: Dishwasher, Disposal, Dryer, Electric Water Heater, Microwave, Range, Refrigerator, Washer

GarageYN: No

FireplaceYN: No

Cooling: Central Air

ExteriorFeatures: Private Entrance, Sidewalk, Sliding Doors

Features: Ceiling Fans(s), High Ceilings, Solid Surface Counters

Building Details

NewConstructionYN: No

Exterior material: Block, Concrete

Heating: Central

Roof: Shingle



Call us now

Phone: 727-888-3292

Email: RealtorCandis@gmail.com



Charles Rutenberg Realty, Inc.
THE STANDARD OF EXCELLENCE

Miscellaneous

Ownership: Fee Simple

Other Equipment: Private Entrance

Occupant Type: Vacant

Showing Requirements: Other, ShowingTime



Call us now

Phone: 727-888-3292

Email: RealtorCandis@gmail.com



Charles Rutenberg Realty, Inc.
THE STANDARD OF EXCELLENCE