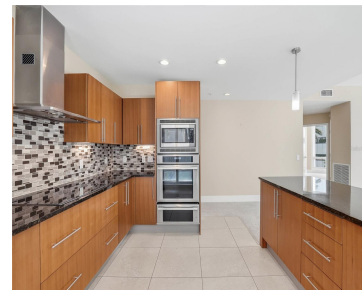


175 1ST STREET ST PETERSBURG FL 33701

<https://candiscarmichael.com>



One or more photo(s) has been virtually staged. Welcome to Signature Place—one of downtown St. Pete's premier downtown addresses. This spacious 2-bedroom, 2-bath residence offers an impressive 1,370 SF floor plan, larger than many comparable units in the building, with 405 SF of private outdoor living across two terraces—making it one of the best values [...]

- 2 beds
- 2 baths
- Residential
- Condominium
- Active
- 1370 sq ft



Courtesy of

Listing Office: SMITH & ASSOCIATES REAL ESTATE

Status: Active

Office ID: MFR260033129

MLS ID: MFRTB8500276



Call us now

Phone: 727-888-3292

Email: RealtorCandis@gmail.com



Charles Rutenberg Realty, Inc.
THE STANDARD OF EXCELLENCE

Description

Virtual Tour: <https://www.propertypanorama.com/instaview/stellar/TB8500276>

Basics

Unit Number: 303

Date added: Added 5 days ago

Type: Residential

Bathrooms: 2 baths

Floors: 36 floors

Year built: 2009

View: City

ListOfficeName: SMITH & ASSOCIATES REAL ESTATE

ListAOR: mfrmls

Bathrooms Full: 2

Category: Condominium

Bedrooms: 2 beds

Half baths: 0 half baths

Area, sq ft: 1370 sq ft

UnitNumber: 303

SubdivisionName: SIGNATURE PLACE CONDO

GarageSpaces: 2

Location Details

Township: 31

Elementary School: Campbell Park Elementary-PN

High School: St. Petersburg High-PN

Road Surface Type: Paved

Middle Or Junior School: John Hopkins Middle-PN

Property Features



Call us now

Phone: 727-888-3292

Email: RealtorCandis@gmail.com



Charles Rutenberg Realty, Inc.
THE STANDARD OF EXCELLENCE

Interior Features: Ceiling Fans(s), Eat-in Kitchen, Stone Counters, Walk-In Closet(s)

Flooring: Carpet, Tile

Parking Features: Assigned, Circular Driveway, Covered, Off Street, On Street, Reserved, Basement

Attached Garage YN: Yes

Pets Allowed: Breed Restrictions, Number Limit, Size Limit, Yes

Roof: Membrane

Utilities: Electricity Connected, Sewer Connected, Water Connected

View: City

Sewer: Public Sewer

Heating: Central

Lot Features: City Limits, Landscaped, Near Marina, Near Public Transit, Sidewalk, Paved

Appliances: Built-In Oven, Dishwasher, Dryer, Freezer, Microwave, Range, Range Hood, Refrigerator, Washer

Laundry Features: Inside

Garage YN: Yes

Garage Spaces: 2

Exterior Features: Balcony, Sidewalk, Sliding Doors

Architectural Style: Colonial

Vegetation: Trees/Landscaped

Water Source: Public

Cooling: Central Air

Furnished: Unfurnished

Property Details

Subdivision Name: SIGNATURE PLACE CONDO

Levels: One

Foundation Details: Slab

Listing Terms: Cash, Conventional

Parcel Number: 193117818870010303

Direction Faces: East

Construction Materials: Concrete, Stucco

Property Condition: Completed

Association Information

Association YN: Yes

Association Fee Includes: Guard - 24 Hour, Cable TV, Pool, Insurance, Internet, Maintenance Structure, Maintenance Grounds, Management, Pest Control, Sewer, Trash, Water

Association Fee Frequency: Monthly

Community Features: Fitness Center, Pool, Sidewalks



Call us now

Phone: 727-888-3292

Email: RealtorCandis@gmail.com



Charles Rutenberg Realty, Inc.
THE STANDARD OF EXCELLENCE

Fees&Taxes

Tax Year: 2025

Tax Annual Amount:
\$14,598

Tax Legal Description: SIGNATURE PLACE CONDO TOWER BLDG,
UNIT 303

Rooms

Room type	Dimensions	Level	Length	Width
Living Room	16x17	First	17	16
Kitchen	15x14	First	14	15
Primary Bedroom	17x15	First	15	17
Primary Bathroom	14x8	First	8	14
Bedroom 2	13x10	First	10	13
Bathroom 2	11x10	First	10	11

Amenities & Features



Call us now

Phone: 727-888-3292

Email: RealtorCandis@gmail.com



Charles Rutenberg Realty, Inc.
THE STANDARD OF EXCELLENCE

Waterfront available: No

AttachedGarageYN: Yes

PoolPrivateYN: No

CommunityFeatures: Fitness Center, Pool, Sidewalks

Utilities: Electricity Connected, Sewer Connected, Water Connected

Amenities: Built-In Oven, Dishwasher, Dryer, Freezer, Microwave, Range, Range Hood, Refrigerator, Washer

GarageYN: Yes

FireplaceYN: No

Cooling: Central Air

ExteriorFeatures: Balcony, Sidewalk, Sliding Doors

Features: Ceiling Fans(s), Eat-in Kitchen, Stone Counters, Walk-In Closet(s)

Building Details

ArchitecturalStyle: Colonial **NewConstructionYN:** No

Heating: Central

Exterior material: Concrete, Stucco

Roof: Membrane

Parking: Assigned, Basement, Circular Driveway, Covered, Off-street, On-street, Reserved

Miscellaneous

Ownership: Condominium

Occupant Type:
Vacant

Showing Requirements: Appointment Only, Listing Agent Must Accompany, See Remarks, ShowingTime



Call us now

Phone: 727-888-3292

Email: RealtorCandis@gmail.com



Charles Rutenberg Realty, Inc.
THE STANDARD OF EXCELLENCE