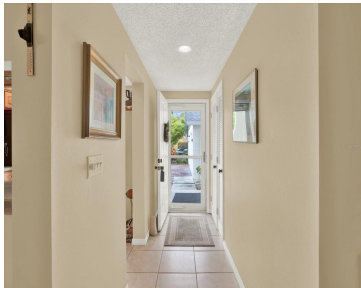


14880 SHIPWATCH TRACE LARGO FL 33774

https://candiscarmichael.com



WELCOME TO SHIPWATCH, ONE OF LARGO’S MOST DESIRABLE COMMUNITIES LOCATED JUST MINUTES FROM THE STUNNING GULF BEACHES. This beautifully maintained 2-bedroom/2-bathroom, 1ST FLOOR CONDO offers effortless living with a bright, open layout and thoughtful upgrades throughout. Step inside to find a split floor plan with well-appointed and spacious living/dining areas. The kitchen offers ample cabinet [...]

- 2 beds
- 2 baths
- Residential
- Condominium
- Active
- 1235 sq ft



Courtesy of

Listing Office: COASTAL PROPERTIES GROUP INTERNATIONAL
Status: Active

Office ID: MFR260031031
MLS ID: MFRTB8453752



Call us now
Phone: 727-888-3292
Email: RealtorCandis@gmail.com



Description

Virtual Tour: <https://www.propertypanorama.com/instaview/stellar/TB8453752>

Basics

Unit Number: 1912

Date added: Added 2 weeks ago

Type: Residential

Bathrooms: 2 baths

Floors: 1 floor

Lot size, sq ft: 0 sq ft

UnitNumber: 1912

ListOfficeName: COASTAL PROPERTIES GROUP
INTERNATIONAL

ListAOR: mfrmls

Bathrooms Full: 2

Category: Condominium

Bedrooms: 2 beds

Half baths: 0 half baths

Area, sq ft: 1235 sq ft

Year built: 1993

SubdivisionName: SHIPWATCH

GarageSpaces: 1

Location Details

Township: 30

Road Surface Type: Paved

Elementary School: Oakhurst Elementary-PN **Middle Or Junior School:** Seminole Middle-PN

High School: Seminole High-PN

Property Features



Call us now

Phone: 727-888-3292

Email: RealtorCandis@gmail.com



Charles Rutenberg Realty, Inc.
THE STANDARD OF EXCELLENCE

Interior Features: Ceiling Fans(s), Split Bedroom, Stone Counters, Thermostat, Walk-In Closet(s)

Flooring: Ceramic Tile, Laminate, Wood

Patio And Porch Features: Patio, Rear Porch, Screened

Garage YN: Yes

Pets Allowed: Yes

Roof: Shingle

Vegetation: Mature Landscaping, Trees/Landscaped

Sewer: Public Sewer

Heating: Central, Electric

Lot Features: Landscaped, Paved

Appliances: Dishwasher, Disposal, Dryer, Microwave, Range, Refrigerator, Washer

Laundry Features: Inside, Laundry Closet

Parking Features: Deeded, Oversized

Garage Spaces: 1

Exterior Features: Sliding Doors, Tennis Court(s)

Utilities: BB/HS Internet Available, Cable Available, Electricity Connected, Sewer Connected, Water Connected

Water Source: Public

Cooling: Central Air

Furnished: Negotiable

Property Details

Subdivision Name: SHIPWATCH

Levels: One

Foundation Details: Block

Listing Terms: Cash, Conventional, FHA, VA Loan

Parcel Number: 18-30-15-81173-001-1912

Direction Faces: North

Construction Materials: Block

Association Information

Association YN: Yes

Association Fee Frequency: Monthly

Association Amenities: Fitness Center, Gated, Maintenance, Pool, Tennis Court(s)

Association Fee: 845

Association Fee Includes: Cable TV, Common Area Taxes, Pool, Internet, Maintenance Structure, Maintenance Grounds, Sewer, Trash, Water

Community Features: Deed Restrictions, Fitness Center, Gated Community - No Guard, Irrigation-Reclaimed Water, Pool, Tennis Court(s), Street Lights



Call us now

Phone: 727-888-3292

Email: RealtorCandis@gmail.com



Charles Rutenberg Realty, Inc.
THE STANDARD OF EXCELLENCE

Fees&Taxes

Tax Year: 2025

Tax Annual Amount: \$5,447

Tax Legal Description: SHIPWATCH NINE CONDO PHASE 1
BLDG 14880, UNIT 1912

Tax Lot: 1912

Rooms

Room type	Level
Kitchen	First
Primary Bedroom	First
Bedroom 1	First
Kitchen	First
Living Room	First

Amenities & Features

Waterfront available: No

AttachedGarageYN: No

PoolPrivateYN: No

CommunityFeatures: Deed Restrictions, Fitness Center, Gated Community - No Guard, Irrigation-Reclaimed Water, Pool, Tennis Court(s), Street Lights

Utilities: BB/HS Internet Available, Cable Available, Electricity Connected, Sewer Connected, Water Connected

Amenities: Dishwasher, Disposal, Dryer, Microwave, Range, Refrigerator, Washer

GarageYN: Yes

FireplaceYN: No

Cooling: Central Air

ExteriorFeatures: Sliding Doors, Tennis Court(s)

Features: Ceiling Fans(s), Split Bedroom, Stone Counters, Thermostat, Walk-In Closet(s)

Building Details

NewConstructionYN: No

Exterior material: Block

Parking: Deeded, Oversized

Heating: Central, Electric

Roof: Shingle

Miscellaneous

Ownership: Condominium

Other Equipment: Irrigation Equipment

Showing Requirements: Supra Lock Box, Appointment Only, Contact Call Center, Lock Box Electronic

Occupant Type: Owner

Other Structures: Tennis Court(s)



Call us now

Phone: 727-888-3292

Email: RealtorCandis@gmail.com



Charles Rutenberg Realty, Inc.
THE STANDARD OF EXCELLENCE