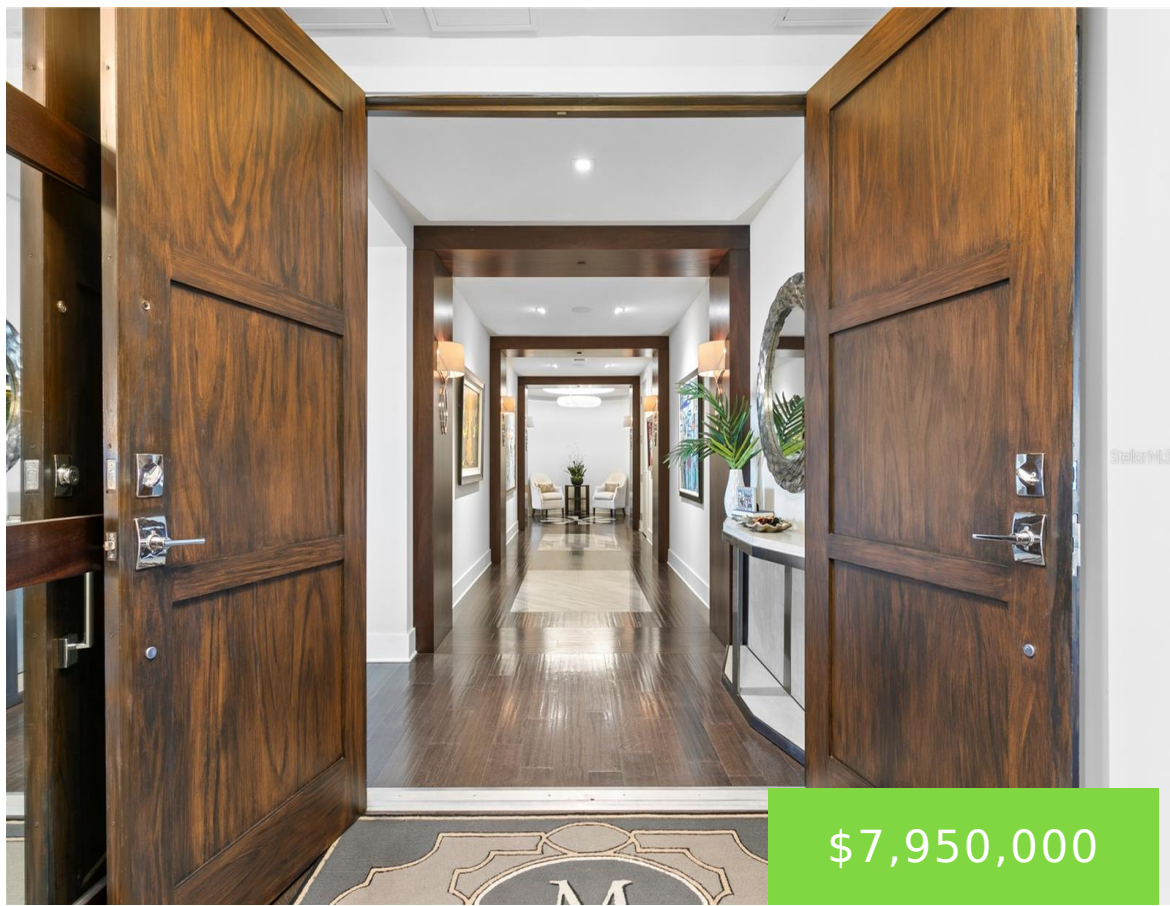
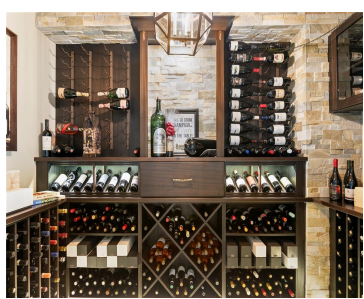
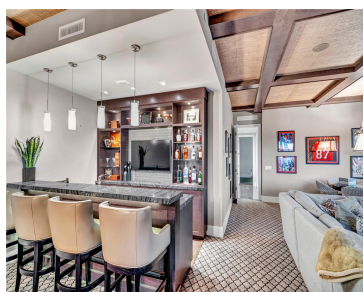


146 4TH AVENUE ST PETERSBURG FL 33701

<https://candiscarmichael.com>



\$7,950,000



PRICE IMPROVEMENT & RARE 2.75% ASSUMABLE MORTGAGE. There are residences, and then there are private sanctuaries in the sky—homes so rarely available they become part of a city’s legacy. Now offered at a compelling new value, this full-floor penthouse at Rowland Place is a singular offering of scale, light, and absolute privacy. Spanning over 7,450 [...]

- 5 beds
- 7 baths
- Residential
- Condominium
- Active
- 7457 sq ft



Courtesy of

Listing Office: COMPASS FLORIDA LLC

Status: Active

Office ID: MFR249532121

MLS ID: MFRTB8362300



Call us now

Phone: 727-888-3292
 Email: RealtorCandis@gmail.com



Description

Virtual Tour: <https://www.propertypanorama.com/instaview/stellar/TB8362300>

Basics

Unit Number: 600

Bathrooms Half: 1

Category: Condominium

Bedrooms: 5 beds

Half baths: 1 half bath

Area, sq ft: 7457 sq ft

Year built: 2015

View: City, Water

ListOfficeName: COMPASS FLORIDA LLC

ListAOR: mfrmls

Bathrooms Full: 6

Date added: Added 2 months ago

Type: Residential

Bathrooms: 7 baths

Floors: 1 floor

Lot size, sq ft: 23613 sq ft

UnitNumber: 600

SubdivisionName: ROWLAND PLACE CONDO

GarageSpaces: 4

Location Details

Township: 31

Elementary School: North Shore Elementary-PN

High School: St. Petersburg High-PN

Road Surface Type: Asphalt

Middle Or Junior School: John Hopkins Middle-PN

Property Features



Call us now

Phone: 727-888-3292

Email: RealtorCandis@gmail.com



Charles Rutenberg Realty, Inc.
THE STANDARD OF EXCELLENCE

Interior Features: Built-in Features, Ceiling Fans(s), Coffered Ceiling(s), Crown Molding, Dry Bar, Eat-in Kitchen, Elevator, Kitchen/Family Room Combo, Living Room/Dining Room Combo, Open Floorplan, Primary Bedroom Main Floor, Solid Surface Counters, Solid Wood Cabinets, Split Bedroom, Stone Counters, Thermostat, Walk-In Closet(s), Wet Bar, Window Treatments

Flooring: Carpet, Marble, Tile, Wood

Fireplace YN: Yes

Parking Features: Alley Access, Garage Door Opener, Ground Level, On Street, Oversized

Attached Garage YN: Yes

Pets Allowed: Cats OK, Dogs OK, Number Limit, Size Limit

Roof: Other

Window Features: Blinds, Double Pane Windows, Drapes, Shades, Window Treatments

View: City, Water

Sewer: Public Sewer

Heating: Central, Electric

Appliances: Bar Fridge, Built-In Oven, Convection Oven, Dishwasher, Disposal, Dryer, Electric Water Heater, Exhaust Fan, Freezer, Ice Maker, Microwave, Range Hood, Refrigerator, Washer

Laundry Features: Inside, Laundry Room

Fireplace Features: Gas, Living Room

Garage YN: Yes

Garage Spaces: 4

Exterior Features: Balcony, Outdoor Grill, Sidewalk, Sliding Doors

Security Features: Closed Circuit Camera(s), Security System

Utilities: Cable Connected, Electricity Connected, Fiber Optics, Natural Gas Connected, Phone Available, Public, Sewer Connected, Water Connected

Water Source: Public

Cooling: Central Air

Furnished: Negotiable

Property Details

Subdivision Name: ROWLAND PLACE CONDO

Levels: One

Foundation Details: Slab

Listing Terms: Cash, Conventional

Parcel Number: 19-31-17-77230-000-6000

Direction Faces: North

Construction Materials: Block, Concrete

Association Information



Call us now

Phone: 727-888-3292

Email: RealtorCandis@gmail.com



Charles Rutenberg Realty, Inc.
THE STANDARD OF EXCELLENCE

Association YN: Yes

Association Fee Includes: Cable TV, Escrow Reserves Fund, Gas, Insurance, Maintenance Structure, Maintenance Grounds, Management, Sewer, Trash, Water

Association Fee Frequency: Monthly

Community Features: Association Recreation - Owned, Deed Restrictions, Sidewalks, Street Lights

Fees&Taxes

Tax Year: 2024

Tax Annual Amount: \$104,703

Tax Legal Description: ROWLAND PLACE CONDO UNIT 600

Tax Lot: 6000

Rooms



Call us now

Phone: 727-888-3292

Email: RealtorCandis@gmail.com



Charles Rutenberg Realty, Inc.
THE STANDARD OF EXCELLENCE

Room type	Dimensions	Level	Length	Width
Kitchen	21x11	First	11	21
Living Room	21x11	First	11	21
Dining Room	21x11	First	11	21
Great Room	32x19	First	19	32
Primary Bedroom	26x22	First	22	26
Bedroom 2	22x17	First	17	22
Bedroom 3	17x15	First	15	17
Bedroom 4	18x12	First	12	18
Game Room	35x27	First	27	35
Media Room	17x15	First	15	17
Office	14x13	First	13	14
Gym	17x9	First	9	17

Amenities & Features



Call us now

Phone: 727-888-3292

Email: RealtorCandis@gmail.com



Charles Rutenberg Realty, Inc.
THE STANDARD OF EXCELLENCE

Waterfront available: No

AttachedGarageYN: Yes

PoolPrivateYN: No

Security Features: Closed Circuit Camera(s), Security System

WindowFeatures: Blinds, Double Pane Windows, Drapes, Shades, Window Treatments

Utilities: Cable Connected, Electricity Connected, Fiber Optics, Natural Gas Connected, Phone Available, Public, Sewer Connected, Water Connected

Amenities: Bar Fridge, Built-In Oven, Convection Oven, Dishwasher, Disposal, Dryer, Electric Water Heater, Exhaust Fan, Freezer, Ice Maker, Microwave, Range Hood, Refrigerator, Washer

GarageYN: Yes

FireplaceYN: Yes

Cooling: Central Air

CommunityFeatures: Association Recreation - Owned, Deed Restrictions, Sidewalks, Street Lights

ExteriorFeatures: Balcony, Outdoor Grill, Sidewalk, Sliding Doors

Features: Built-in Features, Ceiling Fans(s), Coffered Ceiling(s), Crown Molding, Dry Bar, Eat-in Kitchen, Elevator, Gas, Kitchen/Family Room Combo, Living Room, Living Room/Dining Room Combo, Open Floorplan, Primary Bedroom Main Floor, Solid Surface Counters, Solid Wood Cabinets, Split Bedroom, Stone Counters, Thermostat, Walk-In Closet(s), Wet Bar, Window Treatments

Building Details

NewConstructionYN: No

Exterior material: Block, Concrete

Parking: Alley Access, Garage Door Opener, Ground Level, On-street, Oversized

Heating: Central, Electric

Roof: Other

Miscellaneous

Ownership: Condominium

Showing Requirements: Appointment Only, Call Listing Agent

Occupant Type: Vacant



Call us now

Phone: 727-888-3292

Email: RealtorCandis@gmail.com



Charles Rutenberg Realty, Inc.
THE STANDARD OF EXCELLENCE