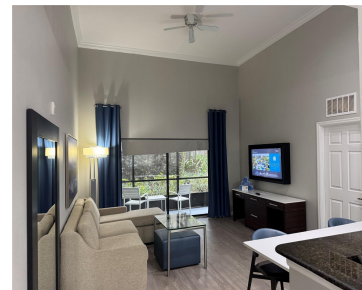
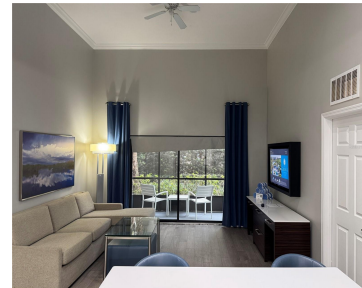


14501 GROVE RESORT AVENUE WINTER GARDEN FL 34787

<https://candiscarmichael.com>



\$185,000



Welcome to your fully furnished, turn-key vacation retreat at The Grove Resort & Spa Orlando—a highly sought-after, full-service luxury resort located just minutes from Walt Disney World Resort. As part of the Walt Disney World Good Neighbor Hotel Program, this property offers exceptional appeal for both personal use and income-generating potential. This spacious 2-bedroom, 2-bathroom [...]

- 2 beds
- 2 baths
- Residential
- Condo - Hotel
- Active
- 1265 sq ft



Courtesy of

Listing Office: DALTON WADE INC

Status: Active

Office ID: MFR260031661

MLS ID: MFRA4688528



Call us now

Phone: 727-888-3292

Email: RealtorCandis@gmail.com



Charles Rutenberg Realty, Inc.
THE STANDARD OF EXCELLENCE

Description

Virtual Tour: <https://www.propertypanorama.com/instaview/stellar/A4688528>

Basics

Unit Number: 1110

Date added: Added 3 hours ago

Type: Residential

Bathrooms: 2 baths

Floors: 7 floors

Lot size, sq ft: 1452 sq ft

UnitNumber: 1110

ListOfficeName: DALTON WADE INC

Bathrooms Full: 2

Category: Condo - Hotel

Bedrooms: 2 beds

Half baths: 0 half baths

Area, sq ft: 1265 sq ft

Year built: 2016

SubdivisionName: GROVE RESORT

ListAOR: mfrmls

Location Details

Township: 24

Road Surface Type: Concrete

Property Features

Interior Features: Open Floorplan, Thermostat, Walk-In Closet(s)

Flooring: Carpet, Ceramic Tile

Pets Allowed: Yes

Roof: Shingle

Water Source: Public

Cooling: Central Air

Furnished: Furnished

Appliances: Dishwasher, Dryer, Microwave, Range, Refrigerator, Washer

Laundry Features: Laundry Room

Exterior Features: Playground, Sidewalk

Utilities: Cable Available, Public, Sewer Available, Water Connected

Sewer: Public Sewer

Heating: Central



Call us now

Phone: 727-888-3292

Email: RealtorCandis@gmail.com



Charles Rutenberg Realty, Inc.
THE STANDARD OF EXCELLENCE

Property Details

Subdivision Name: GROVE RESORT

Parcel Number: 31-24-27-3000-01-100

Levels: One

Direction Faces: East

Foundation Details: Slab

Construction Materials: Brick

Association Information

Association YN: Yes

Association Fee: 805

Association Fee Frequency: Monthly

Community Features: Clubhouse, Pool, Restaurant, Sidewalks

Fees&Taxes

Tax Year: 2025

Tax Annual Amount: \$6,081

Tax Other Annual Assessment Amount: 2127

Tax Legal Description: GROVE RESORT AND SPA HOTEL CONDOMINIUM 120160596750 UNIT 1110 (UNIT NUMBER CORRECTED PER FIRST AMENDMENT TO GROVE RESORT AND SPA HOTEL CONDOMINIUM 1 PER 20170103390)

Tax Lot: x

Rooms



Call us now

Phone: 727-888-3292

Email: RealtorCandis@gmail.com



Charles Rutenberg Realty, Inc.
THE STANDARD OF EXCELLENCE

Room type	Dimensions	Level	Length	Width
Living Room	16.5x14	First	14	16.5
Kitchen	14x10	First	10	14
Dining Room	10x10	First	10	10
Primary Bedroom	16x14	First	14	16

Amenities & Features

Waterfront available: No

AttachedGarageYN: No

PoolPrivateYN: No

CommunityFeatures: Clubhouse, Pool, Restaurant, Sidewalks

Utilities: Cable Available, Public, Sewer Available, Water Connected

Amenities: Dishwasher, Dryer, Microwave, Range, Refrigerator, Washer

GarageYN: No

FireplaceYN: No

Cooling: Central Air

ExteriorFeatures: Playground, Sidewalk

Features: Open Floorplan, Thermostat, Walk-In Closet(s)

Building Details

NewConstructionYN: No

Exterior material: Brick

Heating: Central

Roof: Shingle

Miscellaneous



Call us now

Phone: 727-888-3292

Email: RealtorCandis@gmail.com



Charles Rutenberg Realty, Inc.
THE STANDARD OF EXCELLENCE

Ownership: Fee Simple

Occupant Type: Tenant

Other Equipment: Playground

Showing Requirements: ShowingTime



Call us now

Phone: 727-888-3292

Email: RealtorCandis@gmail.com



Charles Rutenberg Realty, Inc.
THE STANDARD OF EXCELLENCE